



**OTANI®**

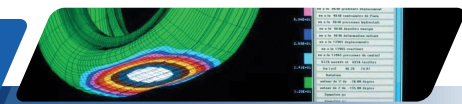
**DRIVING CONFIDENCE**

**MADE IN THAILAND**



**PCR & LTR  
PATTERN DIGEST**

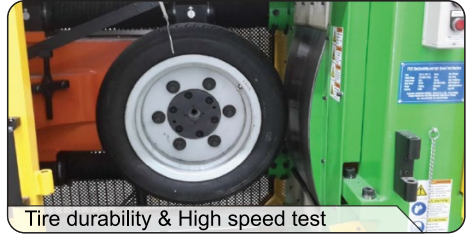
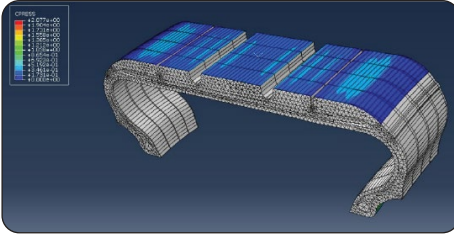
# PRODUCT DEVELOPMENT



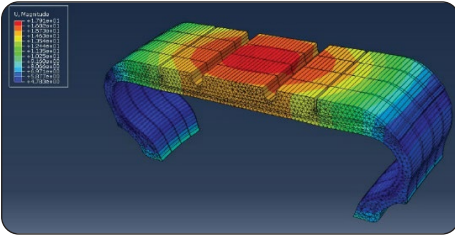
## Design & Testing

### Design simulations

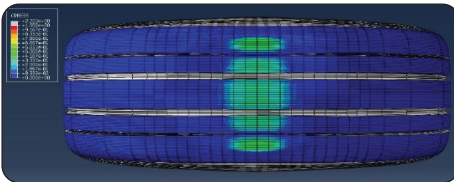
### Product testing



Tire durability & High speed test



Rolling Resistance



Comfort/Handling/Noise/Grip



# WARRANTY

## POLICY OVERVIEW



Customer Service remains our prime objective and it is our policy to pay keen attention at all times to providing top class after-sales service. A warranty is manufacturer's **assurance of quality** that defines the period of time that they will replace the products that show signs of defects due to material or workmanship.



WARRANTY PERIOD - 5 YEARS



UP TO 1.6 MM (TWI)



WITHIN ONE WORKING WEEK



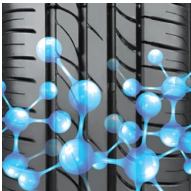
# EKI000



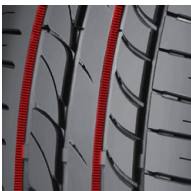
PCR



Asymmetrical tread design that offers remarkable grip on both dry & wet conditions



Special tread compound that delivers unmatched driving comfort performance at high speed



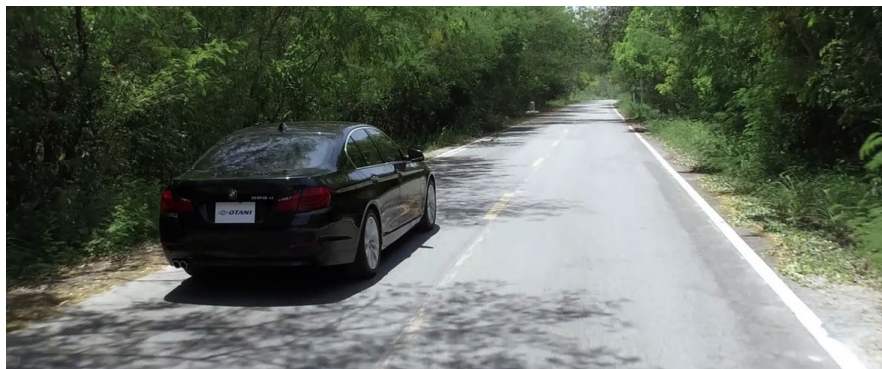
Low Noise Groove Design enables it to be a silent performer

UTQG		
500	A	A



Rim Dia	Aspect Ratio	Size	Load & Speed Index	Maximum Load	Maximum Inflation Pressure	Rim Width	Section Width	Overall Diameter	Tread Depth
				Kgs	psi	inches	mm	mm	mm
13	70	175/70R13*	82T	475	44	5.0	182	574	7.3
	65	165/65R13	77V	412	44	5.0	167	543	7.5
	60	175/60R13	77V	412	44	5.0	175	540	7.6
14	70	175/70R14	84V	500	44	5.0	181	602	7.4
		185/70R14	88H	560	44	5.5	193	614	7.1
		195/70R14	91H	615	44	6.0	203	627	7.1
		205/70R14	98H XL	750	50	6.0	213	640	7.3
	65	165/65R14	79T	437	44	5.0	170	567	7.1
		175/65R14	86V XL	530	50	5.0	179	584	7.5
		185/65R14	86V	530	44	5.5	190	595	7.6
60	185/60R14	82H	475	44	5.5	188	575	7.1	
15	70	205/70R15	96V	710	44	6.0	212	667	7.5
		215/70R15	98V	750	44	6.5	223	681	7.5
	65	175/65R15	84V	500	44	5.0	177	610	7.4
		185/65R15	88V	560	44	5.5	189	621	7.5
		195/65R15	91H	615	44	6.0	201	635	7.4
		205/65R15	94V	670	44	6.0	210	646	7.5
	60	185/60R15	84V	500	44	5.5	189	603	7.5
		195/60R15	88V	560	44	6.0	199	615	7.5
	55	185/55R15	82V	475	44	6.0	192	585	7.4
		195/55R15	85V	515	44	6.0	201	595	7.5
50	195/50R15	82V	475	44	6.0	195	580	7.5	
16	65	195/65R16	92V	630	44	6.0	200	663	7.4
		215/65R16	98V	750	44	6.5	224	683	7.7
		225/65R16	100V	800	44	6.5	228	695	7.6
		235/65R16	103V	875	44	7.0	241	708	7.7
	60	225/60R16	98H	750	44	6.5	225	673	7.6
	50	195/50R16	84V	500	44	6.0	192	608	7.5
17	65	215/65R17	99H	775	44	6.5	223	714	7.6
	60	225/60R17	99V	775	44	6.5	226	705	7.7
18	60	225/60R18	100H	800	44	6.5	230	729	7.6

\* Available in BSW & WSW sidewall styles

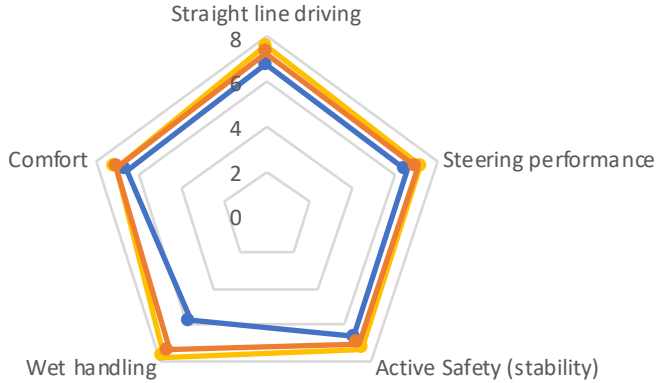




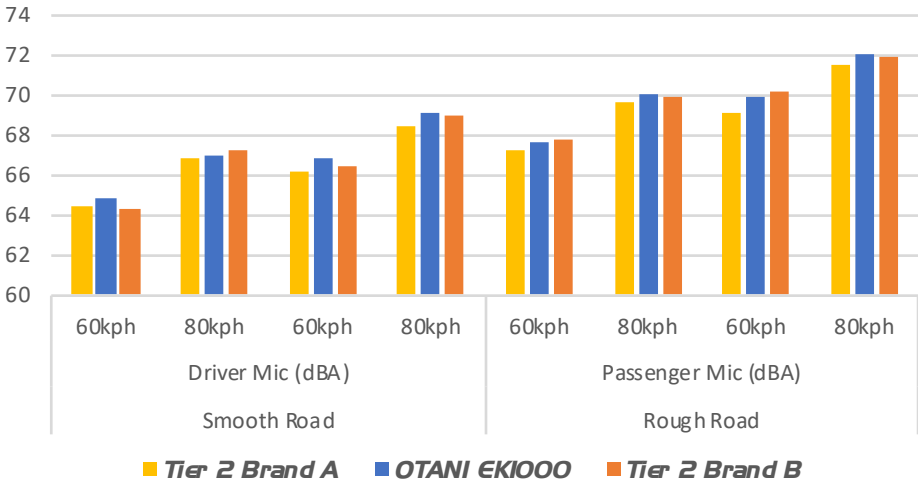
## Test Results

### Subjective evaluation test (Ride & Handling)

—●— Tier 2 Brand A    
 —●— OTANI EK1000    
 —●— Tier 2 Brand B

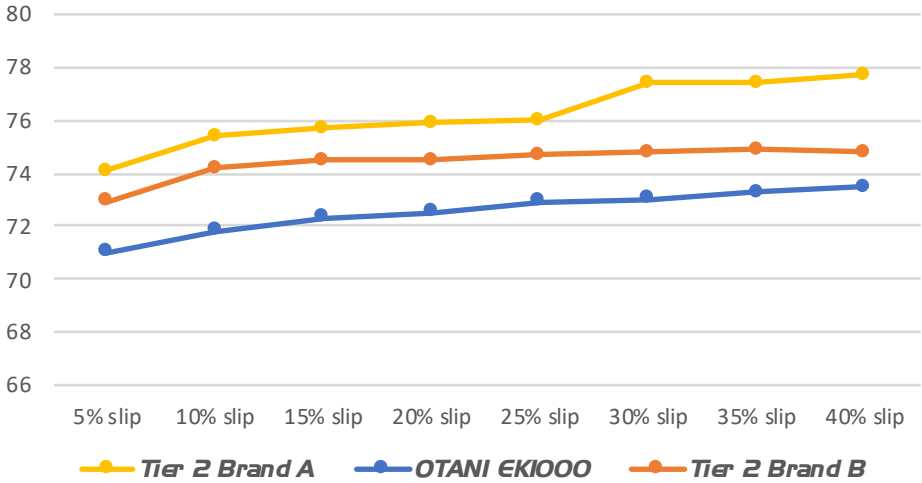


### Internal Noise overall





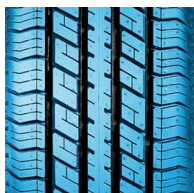
### Longitudinal Aquaplaning



# EK2000



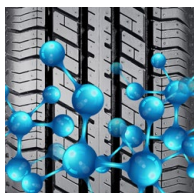
PCR



Optimized tread pattern design to reduce hydroplaning risk, braking distance and ensure good wet handling performance



Variable sipes design to reduce noises and provide good comfort



Enhanced tread compound formula to ensure longevity, good grip and lower fuel consumption

UTQG		
600	A	A



# EK2000



PCR

Rim Dia	Aspect Ratio	Size	Load & Speed Index	Maximum Load	Maximum Inflation Pressure	Rim Width	Section Width	Overall Diameter	Tread Depth
				Kgs	psi	inches	mm	mm	mm
14	65	185/65R14	86H	530	44	5.5	190	595	7.7
15	60	195/60R15	88H	560	44	6.0	197	618	7.6
	65	185/65R15	88H	560	44	5.5	191	622	8.0
		195/65R15	91H	615	44	6.0	203	634	8.4
		205/65R15	94H	670	44	6.0	206	645	7.3
		205/70R15	96H	710	44	6.0	215	666	7.3
	70	215/70R15	98H	750	44	6.5	226	680	7.3
16		55	215/55R16	93H	650	44	7.0	226	642
	205/55R16		91H	615	44	6.5	211	635	7.5
	60	205/60R16	92H	630	44	6.0	205	653	7.7
		215/60R16	95H	690	44	6.5	223	668	7.8
225/60R16		98H	750	44	6.5	225	676	8.2	
65	205/65R16	95H	690	44	6.0	205	670	7.6	

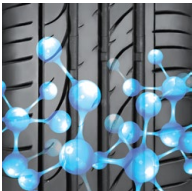
# KC2000



## UHP



Sporty asymmetrical tread design that provides unparalleled stability for high performance cars



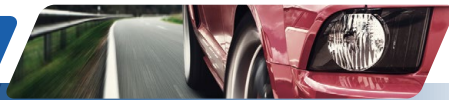
Unique tread compound that delivers shorter braking distance and higher fuel efficiency



Serrations on groove walls reduce pipe resonance noise, making it extremely silent tire

UTQG		
320	A	A

# KC2000



UHP

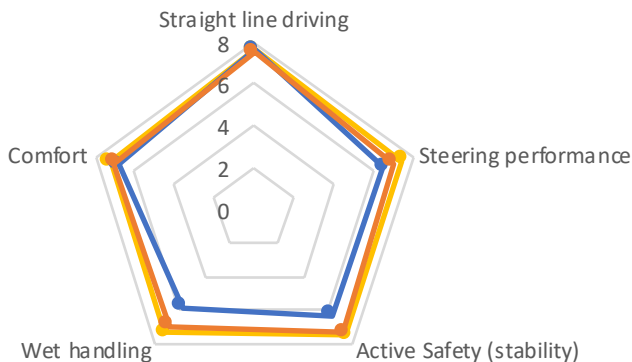
Rim Dia	Aspect Ratio	Size	Load & Speed Index	Maximum Load	Maximum Inflation Pressure	Rim Width	Section Width	Overall Diameter	Tread Depth
				Kgs	psi	inches	mm	mm	mm
14	60	205/60ZR14	88H	560	44	6.0	207	599	8.0
15	60	205/60ZR15	91V	615	44	6.0	206	627	7.4
16	60	205/60ZR16	92V	630	44	6.0	204	653	7.5
		215/60ZR16	99V XL	775	50	6.5	219	664	7.3
	55	205/55ZR16	94Y XL	670	50	6.5	213	630	7.5
		215/55ZR16	97W XL	730	50	7.0	226	639	7.2
		225/55ZR16	99Y XL	775	50	7.0	229	651	7.3
		205/50ZR16	91W XL	615	50	6.5	206	612	7.4
17	55	215/55ZR17	98W XL	750	50	7.0	225	671	7.3
		225/55ZR17	101W XL	825	50	7.0	230	683	7.4
		225/55ZR17	97Y	730	44	7.0	230	683	7.4
		235/55ZR17	103W XL	875	50	7.5	242	692	7.3
	50	205/50ZR17	93Y XL	650	50	6.5	208	642	7.5
		215/50ZR17	95W XL	690	50	7.0	218	650	7.3
		225/50ZR17	98Y XL	750	50	7.0	224	662	7.4
		235/50ZR17	96W	710	44	7.5	240	671	7.3
	45	205/45ZR17	88Y XL	560	50	7.0	205	620	7.3
		215/45ZR17	91W XL	615	50	7.0	210	628	7.3
		225/45ZR17	94Y XL	670	50	7.5	222	638	7.5
		235/45ZR17	97Y XL	730	50	8.0	233	647	7.2
18	55	245/45ZR17	99Y XL	775	50	8.0	240	650	7.3
		235/55ZR18	104W XL	900	50	7.5	240	716	7.4
	50	225/50ZR18	95W	690	44	7.0	225	685	7.3
		235/50ZR18	101W XL	825	50	7.5	241	698	7.4
	45	225/45ZR18	95Y XL	690	50	7.5	223	661	7.4
		235/45ZR18	98W XL	750	50	8.0	235	672	7.4
		245/45ZR18	100Y XL	800	50	8.0	239	675	7.3
	40	225/40ZR18	92Y XL	630	50	8.0	229	640	7.3
		245/40ZR18	97W XL	730	50	8.5	241	655	7.5
	35	265/35ZR18	97W XL	730	50	9.5	268	642	7.2
19	55	225/55ZR19	99W	775	44	7.0	237	736	7.3
		235/55ZR19	105W XL	925	50	7.5	246	740	7.3
		245/55ZR19	103W	875	44	7.5	255	753	7.3
	50	235/50ZR19	103Y XL	875	50	7.5	240	724	7.3
	45	235/45ZR19	99W XL	775	50	8.0	231	697	7.3
		245/45ZR19	98Y	750	44	8.0	237	703	7.2
	40	235/40ZR19	96W XL	710	50	8.5	233	672	7.7
		275/40ZR19	105Y XL	925	50	9.5	275	706	7.4
	35	255/35ZR19	96Y XL	710	50	9.0	261	663	7.3
	30	285/30ZR19	98Y XL	750	50	10.0	283	659	7.2
20	55	235/55ZR20	105W XL	925	50	7.5	250	766	7.3
	45	245/45ZR20	103W XL	875	50	8.0	240	727	7.3
	40	275/40ZR20	106W XL	950	50	9.5	278	727	7.3
22	45	285/45ZR22	114W XL	1180	50	9.5	285	815	7.8
		305/45ZR22	118W XL	1320	50	10.0	303	833	7.8
	40	305/40ZR22	114W XL	1180	50	11.0	313	803	7.8
	35	265/35ZR22	102W XL	850	50	9.5	271	719	7.3
24	35	305/35ZR24	112W XL	1120	50	11.0	313	824	7.8



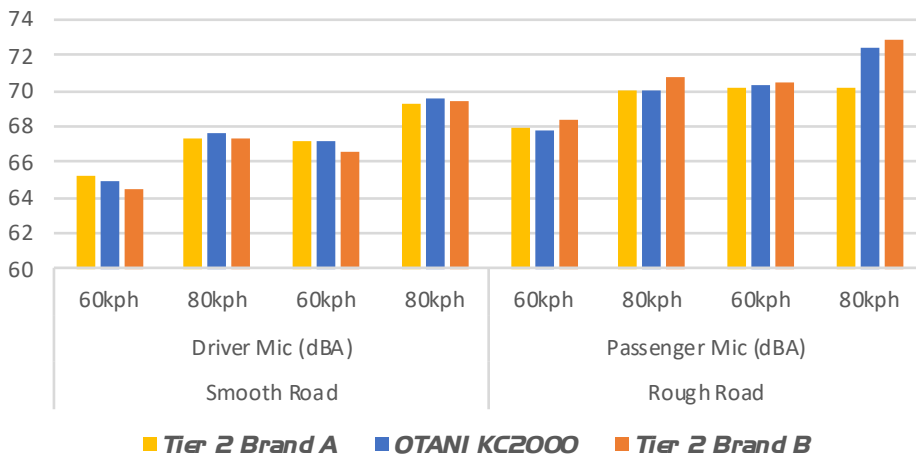
### Test Results

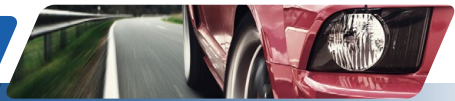
#### Subjective evaluation test (Ride & Handling)

—● Tier 2 Brand A    
 —● OTANI KC2000    
 —● Tier 2 Brand B

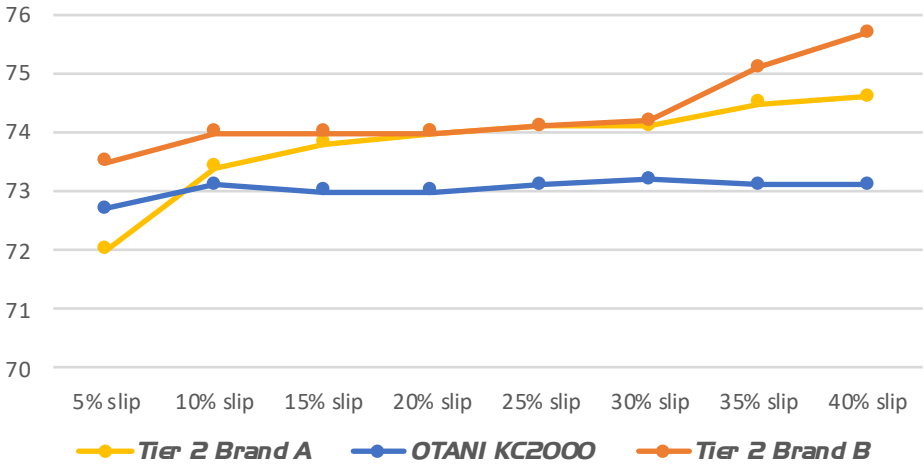


#### Internal Noise overall





### Longitudinal Aquaplaning



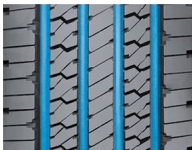
# RK1000



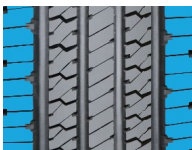
## HIGHWAY TERRAIN



Rugged & robust tread design for better durability & delivers exceptional mileage



Five ribs pattern with open circumferential grooves for firm grip & to reduce hydroplaning on higher speeds



Wide shoulders for greater steering control on wet & dry road conditions

# RK1000



## HIGHWAY TERRAIN

Rim Dia	Aspect Ratio	Size	PR	Load & Speed Index	Maximum Load		Maximum Inflation Pressure	Rim Width	Section Width	Overall Diameter	Tread Depth
					Single (Kgs)	Dual (Kgs)	psi	inches	mm	mm	mm
16	85	LT215/85R16	10	115/112S	1215	1120	80	6.0	225	767	10.7
		LT235/85R16	10	120/116S	1380	1250	80	6.5	245	802	10.7
	75	LT225/75R16	10	115/112S	1215	1120	80	6.0	220	740	10.8
		LT245/75R16	10	120/116S	1380	1250	80	7.0	246	771	11.3
17	80	LT265/75R16	10	123/120S	1550	1400	80	7.5	268	800	11.6
		LT235/80R17	10	120/117S	1400	1285	80	6.5	233	807	11.3
		LT245/75R17	10	121/118S	1450	1320	80	7.0	247	797	11.4
	70	LT245/70R17	10	119/116S	1360	1250	80	7.0	245	775	11.5
		LT265/70R17	10	121/118S	1450	1320	80	8.0	269	800	11.7
18	65	LT275/65R18	10	123/120S	1550	1400	80	8.0	275	816	11.8



# SA1000

## HIGHWAY TERRAIN 4x4



Specially engineered tread design that delivers stability, precise control and good handling



Optimal pitch variation that leads to lower noise and greater ride comfort



Uniquely shaped sipes on the tread gives better grip and stability in all weather conditions

UTQG		
500	A	A



# SA1000



## HIGHWAY TERRAIN 4x4

Rim Dia	Aspect Ratio	Size	Load & Speed Index	Maximum Load	Maximum Inflation Pressure	Rim Width	Section Width	Overall Diameter	Tread Depth
				Kgs	psi	inches	mm	mm	mm
15	75	235/75R15	109H XL	1030	50	6.5	236	730	8.6
	75	265/75R16	116T	1250	44	7.5	272	797	8.4
16	70	215/70R16	100H	800	44	6.5	226	706	9.0
		235/70R16	106H	950	44	7.0	246	737	8.5
		245/70R16	111H XL	1090	50	7.0	249	745	8.6
		255/70R16	111H	1090	44	7.5	260	761	7.5
		265/70R16	112H	1120	44	8.0	275	772	8.7
	60	235/60R16	100H	800	44	7.0	238	686	8.7
17	70	265/70R17	115H	1215	44	8.0	275	806	8.4
		245/70R17	110H	1060	44	7.0	249	777	8.4
	65	225/65R17	102H	850	44	6.5	226	722	8.5
		235/65R17	104H	900	44	7.0	240	738	8.6
		245/65R17	111H XL	1090	50	7.0	243	749	8.6
		255/65R17	114H XL	1180	50	7.5	259	764	8.6
		265/65R17	112H	1120	44	8.0	270	773	8.7
	60	215/60R17	96H	710	44	6.5	218	691	8.6
		235/60R17	102H	850	44	7.0	236	719	8.6
18	65	275/65R18	116H XL	1250	50	8.0	277	813	8.6
	60	235/60R18	107H	975	50	7.0	236	743	8.6
		245/60R18	105H	925	44	7.0	244	748	8.7
		255/60R18	112H XL	1120	50	7.5	258	765	8.6
		265/60R18	114H XL	1180	50	8.0	269	777	8.6
20	55	275/55R20	117H XL	1285	50	8.5	281	810	8.3
	50	265/50R20	111H XL	1090	50	8.5	269	779	8.4

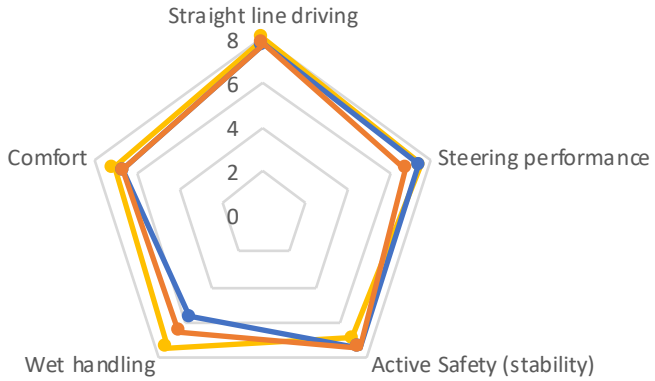




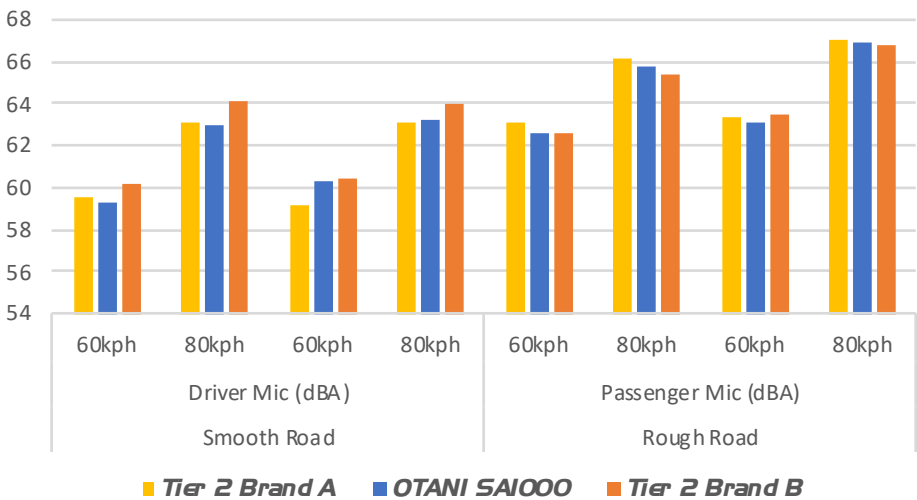
### Test Results

#### Subjective evaluation test (Ride & Handling)

—● Tier 2 Brand A   
 —● OTANI SA1000   
 —● Tier 2 Brand B



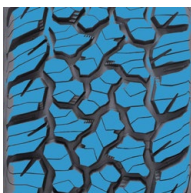
#### Internal Noise Overall



# SA2000



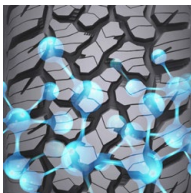
All TERRAIN 4x4



Aggressive tread block design that matches all kinds of road terrains and deliver enhanced stability



Extra thick sidewall to protect shocks, impacts and resists stone penetration



Special tread compound resists "cut & chip" & off-road abuse

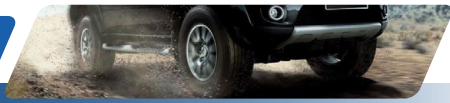
# SA2000



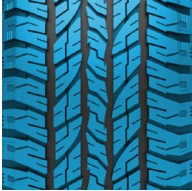
## All TERRAIN 4x4

Rim Dia	Aspect Ratio	Size	PR	Load & Speed Index	Maximum Load		Maximum Inflation Pressure	Rim Width	Section Width	Overall Diameter	Tread Depth
					Single (Kgs)	Dual (Kgs)	psi	inches	mm	mm	mm
16	75	LT 265/75R16	8	119/116Q	1360	1250	65	7.5	275	800	11.7
		LT 265/75R16	10	123/120R	1550	1400	80	7.5	275	800	11.7
		265/75R16	-	116R	1250	-	44	7.5	264	800	12.0
	70	LT 245/70R16	10	118/115Q	1320	1215	80	7.0	253	746	12.0
		LT 265/70R16	10	121/118Q	1450	1320	80	8.0	279	774	12.0
		265/70R16	-	112S	1120	-	44	8.0	275	774	12.0
17	65	LT 265/65R17	10	120/117Q	1400	1285	80	8.0	274	774	12.0
18	65	LT 285/65R18	8	121/118Q	1450	1320	65	8.5	296	825	12.0
	60	LT 265/60R18	10	119/116Q	1360	1250	80	8.0	271	773	12.0
20	55	LT 275/55R20	10	120/117Q	1400	1285	80	8.5	271	773	12.0
	50	265/50R20	-	111S XL	1090	-	50	8.5	276	775	12.0

# SA3000



## ALL TERRAIN 4x4



Aggressive tread block design that matches all kinds of road terrains and deliver enhanced stability



3D sipes leading to outstanding braking performance on wet conditions and delivers enhanced ride comfort



Continuous open lateral channels increase tire grip under skidding conditions and provide enhanced safety

# SA3000



## All TERRAIN 4x4

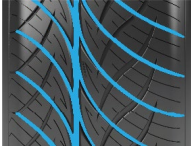
Rim Dia	Aspect Ratio	Size	Load & Speed Index	Maximum Load	Maximum Inflation Pressure	Rim Width	Section Width	Overall Diameter	Tread Depth
				Kgs	psi	inches	mm	mm	mm
15	75	235/75R15	109T XL	1030	50	6.5	239	728	9.5
16	70	235/70R16	109T XL	1030	50	7.0	246	735	9.7
18	65	275/65R18	116T XL	1250	50	8.0	272	812	9.6
20	55	275/55R20	117T XL	1285	50	8.5	280	810	9.8

\*Available in BSW & OWL sidewall styles

# BM1000



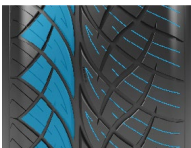
SPORT SUV



Wide circumferential groove for firm grip & to reduce hydroplaning



Large Outer Tread Block to increase the tread footprint for better handling on cornering



Small inner tread blocks & various sipes on tread to achieve shorter braking distance & to enhance vehicle stability

UTQG		
300	A	A

# BM1000



## SPORT SUV

Rim Dia	Aspect Ratio	Size	Load & Speed Index	Maximum Load	Maximum Inflation Pressure	Rim Width	Section Width	Overall Diameter	Tread Depth
				Kgs	psi	inches	mm	mm	mm
17	65	265/65R17	116V XL	1250	50	8.0	276	773	7.8
18	60	225/60R18	104V XL	900	50	6.5	233	725	8.0
		265/60R18	114V XL	1180	50	8.0	277	774	7.8
	55	235/55R18	104V XL	900	50	7.5	241	717	7.4
		255/55R18	109V XL	1030	50	8.0	266	738	7.9
	50	255/50R18	106V XL	950	50	8.0	263	714	7.8
		235/45R18	98V XL	750	50	8.0	236	668	7.8
	45	245/45R18	100V XL	800	50	8.0	242	677	7.8
		255/45R18	103V XL	875	50	8.5	252	686	7.7
		235/40R18	95V XL	690	50	8.5	242	647	7.8
	40	245/40R18	97V XL	750	50	8.5	245	657	7.4
		275/40R18	103V XL	875	50	9.5	276	678	7.7
		265/35R18	97V XL	730	50	9.5	268	642	7.8
	20	50	265/50R20	111V XL	1090	50	8.5	276	776



# MK1000

Light Truck & Van



Robust tread design that enhances durability and load carrying capacity



Reinforced casing offers high endurance needed in commercial transportation



Large tread blocks help in delivering superior traction in all road conditions

# MK1000

## Light Truck & Van



Rim Dia	Aspect Ratio	Size	PR	Load & Speed Index	Maximum Load		Maximum Inflation Pressure	Rim Width	Section Width	Overall Diameter	Tread Depth
					Single (Kgs)	Dual (Kgs)	psi	inches	mm	mm	mm
14	LTRC	185 R14C	8	102/100Q	850	800	65	5.5	194	646	8.2
		195R14C	8	106/104Q	950	900	65	5.5	203	669	8.5
		205R14C	8	109/107Q	1030	975	65	6.0	212	680	8.3
	75	205/75R14*	8	109/107Q	1030	975	68	5.5	206	661	8.4
15	LTRC	195R15C	8	108/106S	1000	950	68	5.5	204	691	8.4

\* Available in BSW & WSW sidewall styles



# MK2000

Light Truck & Van



Square shoulders ensure optimal foot print thereby enhancing stability



Symmetrical tread design prevents heat buildup and wider grooves ensure easier water drainage



Reinforced casing offers high endurance needed in commercial transportation

# MK2000



## Light Truck & Van

Rim Dia	Aspect Ratio	Size	PR	Load & Speed Index	Maximum Load		Maximum Inflation Pressure	Rim Width	Section Width	Overall Diameter	Tread Depth
					Single (Kgs)	Dual (Kgs)					
14	75	225/75 R14C	8	115/113Q	1215	1150	68	6.0	226	689	8.3
	75	225/75 R15C	8	110/118Q	1060	1320	55	6.0	224	715	8.5
15	70	195/70R15C	8	104/102S	900	850	65	6.0	201	655	8.4
		205/70R15C	8	106/104S	950	900	65	6.0	209	668	9.0
		215/70R15C	8	109/107S	1030	975	65	6.5	225	681	9.0
		225/70R15C	8	112/110S	1120	1060	65	6.5	228	697	8.3
		195/75R16C	8	107/105S	975	925	68	5.5	196	698	8.3
16	75	215/75 R16C	8	113/111R	1150	1090	68	6.0	221	724	8.4
		195/65R16C	8	104/102S	900	850	68	6.0	201	660	8.4
	65	205/65R16C	8	107/105S	975	925	68	6.0	209	672	8.3
		225/65R16C	8	112/110S	1120	1060	68	6.5	228	698	8.4
		235/65R16C	10	121/119R	1450	1360	83	7.0	240	712	8.4
		LTRC	205R16C	8	110/108S	1060	1000	65	6.0	212	734

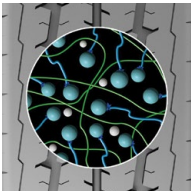


# MK3000

Light Truck & Van



Rugged, aggressive & uniquely shaped blocks on inner ribs & shoulder blocks deliver superior grip in the most demanding condition



Special tread compound provide high mileage & low energy consumption



Strong casing to ensure longevity usage

# MK3000



## Light Truck & Van

Rim Dia	Aspect Ratio	Size	PR	Load & Speed Index	Maximum Load		Maximum Inflation Pressure	Rim Width	Section Width	Overall Diameter	Tread Depth
					Single (Kgs)	Dual (Kgs)	psi	inches	mm	mm	mm
14	LTRC	195R14C	8	106/104Q	950	900	65	5.5	201	661	9.1
		205R14C	8	109/107Q	1030	975	65	6.0	213	680	9.3
15		195R15C	8	106/104Q	950	900	65	5.5	205	684	9.3

\*Available in BSW & WSW sidewall styles

## Load Index

The LOAD INDEX is a numerical code associated with the maximum load a tyre can carry (except for loads at speeds above 210 km/h) at the speed indicated by its Speed Symbol under service conditions specified by the tyre manufacturer

Load Index	kg	Load Index	kg	Load Index	kg
75	387	91	615	107	975
76	400	92	630	108	1000
77	412	93	650	109	1030
78	425	94	670	110	1060
79	437	95	690	111	1090
80	450	96	710	112	1120
81	462	97	730	113	1150
82	475	98	750	114	1180
83	487	99	775	115	1215
84	500	100	800	116	1250
85	515	101	825	117	1285
86	530	102	850	118	1320
87	545	103	875	119	1360
88	560	104	900	120	1400
89	580	105	925	121	1450
90	600	106	950	122	1500

## Speed Symbol

The SPEED SYMBOL indicates the maximum speed at which the tyre can carry a load corresponding to its Load Index (except for speeds above 210 km/h) under service conditions specified by the tyre manufacturer

Speed Symbol	Speed (km/h)	Speed Symbol	Speed (km/h)	Speed Symbol	Speed (km/h)
A1	5	D	65	Q	160
A2	10	E	70	R	170
A3	15	F	80	S	180
A4	20	G	90	T	190
A5	25	J	100	U	200
A6	30	K	110	H	210
A7	35	L	120	V	240
A8	40	M	130	W	270
B	50	N	140	Y	300
C	60	P	150	ZR	>240



**OTANI®**

***DRIVING CONFIDENCE***

**MADE IN THAILAND**

