



## PRODUCT LINE UP

### SPORT, LUXURY & COMFORT

### COMPETITION

Ultra High Performance Tire

**NT555 G2**

NEW



Dry Performance



Ride Comfort



Tread Life



P03-P04

High Performance Tire

**NTBEO**

NEW



Dry Performance



Ride Comfort



Tread Life



P05-P06

Luxury Sport Ultra High Performance Tire

**INVO**



Dry Performance



Ride Comfort



Tread Life



P07-P09

Luxury Comfort Tire

**NTB30**



Dry Performance



Ride Comfort



Tread Life



P10

Max Performance Tire

**NT05**



Dry Performance



Wet Performance



Braking



P11

NITTO Road Racing Tire

**NT01**



Dry Performance



Wet Performance



Braking



P12

\*Ratings based on comparison to other Nitto products in the segment



# FUELED BY ENTHUSIASTS

Nitto Tire is driven by passion and innovation. We create tires for those who are enthusiastic about their vehicles. We always strive to anticipate and drive consumer trends by supporting emerging markets before they are mainstream, helping them grow and driving the market forward.

Our tire sizing, tread patterns and tire compounds combine modern aesthetics with cutting-edge technology. This technology has helped us create some of the most radical-looking tire designs on the market today. These memorable designs are the result of state-of-the-art development, quality engineering and rigorous testing procedures.

By incorporating computer-modeled designs for road noise reduction and a program that aids in enhancing dynamic contact points while driving, our engineers successfully identify and counteract undesirable tire responses in a variety of driving conditions. In addition, the tested technological advances in polymer tread compounds allow our engineers to deliver truly high-quality tires that provide extended tread life, improved traction on both wet and dry roads and inspire driver satisfaction.

## SUV & CUV

## LIGHT TRUCK

Luxury SUV Tire

SUV Tire

All-terrain Tire

Highway Terrain Tire

Mud Terrain Tire

Extreme Mud  
Terrain Tire

*NT421R*

*NT420S*

*TERRA GRAPPLER*

*DURA GRAPPLER*

*Trail Grappler M/T*

*Mud Grappler*

NEW



Dry Performance

Ride Comfort

Tread Life

Dry Performance

Ride Comfort

Tread Life

Dry Performance

Ride Comfort

Tread Life

Off Road Traction

Dry Performance

Ride Comfort

Tread Life

Off Road Traction

Dry Performance

Ride Comfort

Tread Life

Off Road Traction

Dry Performance

Ride Comfort

Tread Life

Off Road Traction

P13-P14

P15

P16

P17-P18

P19

P20



# NT555 G2 ULTRA HIGH PERFORMANCE TIRE

The NT555 G2, Ultra High Performance tire, which finally replace ever-popular product, the first generation NT555, offers improved driving capabilities for owners eagerly waiting for stable handling and braking performance for their contemporary and highly powered sporty vehicles.



**NEW**

## *Ultra High Performance Tire*

1. Superior driving performance
2. Reduce rolling resistance
3. Aggressive tread pattern and stylish sidewall design



\*Ratings based on comparison to other Nitto products in the segment





# NT555 G2

## ULTRA HIGH PERFORMANCE TIRE

### Twin Center Ribs

The NT555 G2 increased\*  
dry traction & stability  
The NT555 G2 improved\*  
contact patch

### Large Tapered Block

The NT555 G2 increased\*  
grip & better  
cornering stability

### Larger Section Blocks for widths 275 and greater

The NT555 G2 enhanced\*  
traction for staggered fitments  
and high horsepower vehicles

### Reinforced Shoulder Blocks

The NT555 G2 improves\*  
dry & wet cornering grip

### 4-Circumferential Grooves

Center grooves and shoulder  
grooves aid water evacuation  
and wet handling



\*In Comparison to NT555.

Inch	Aspect Ratio	Tire Size	Load Index	Speed Symbol	RF/XL	Original Tread Depth (mm)	Inflated dimension		Measuring rim width (inch)	Approved Rim Width (inch)
							Overall diameter (mm)	Overall width (mm)		
22	35	245/35 R22	97	Y	●	7.5	731	248	9.0	8.0 - 9.5
	40	265/40 R22	106	Y	●	7.0	771	271	10.0	9.0 - 10.5
20	30	275/30 R20	97	Y	●	7.7	674	278	10.0	9.0 - 10.0
		245/30 R20	90	Y	●	7.4	656	248	9.0	8.0 - 9.0
		235/30 R20	88	Y	●	7.3	650	241	9.0	8.5
	35	275/35 R20	102	Y	●	7.8	700	278	10.0	9.0 - 11.0
		255/35 R20	97	Y	●	7.6	686	260	9.0	8.5 - 10.0
		245/35 R20	95	Y	●	7.5	680	248	9.0	8.0 - 9.5
		235/35 R20	92	Y	●	7.4	672	241	9.0	8.0 - 9.5
		225/35 R20	90	W	●	7.6	666	230	8.0	7.5 - 9.0
40	245/40 R20	99	Y	●	7.3	704	248	9.0	8.0 - 9.5	
19	30	275/30 R19	96	Y	●	7.7	649	278	10.0	9.0 - 10.0
		265/30 R19	93	Y	●	7.7	643	271	10.0	9.0 - 10.0
	35	275/35 R19	100	Y	●	7.8	675	278	10.0	9.0 - 11.0
		245/35 R19	93	Y	●	7.5	655	248	9.0	8.0 - 9.5
		235/35 R19	91	Y	●	7.4	647	241	9.0	8.0 - 9.5
		225/35 R19	88	Y	●	7.3	641	230	8.0	7.5 - 9.0
	40	215/35 R19	85	Y	●	7.2	633	218	8.0	7.0 - 8.5
		245/40 R19	98	Y	●	7.3	679	248	9.0	8.0 - 9.5
		245/45 R19	102	Y	●	7.3	703	243	8.0	7.5 - 9.0
		225/45 R19	96	Y	●	7.5	685	225	8.0	7.0 - 8.5
45	205/45 R19	91	Y	●	7.3	667	206	7.0	6.5 - 7.5	
18	35	265/35 R18	97	Y	●	7.7	643	271	10.0	9.0 - 10.5
		215/35 R18	84	W	●	7.5	607	218	8.0	7.0 - 8.5
	40	245/40 R18	97	Y	●	7.3	653	248	9.0	8.0 - 9.5
		235/40 R18	95	Y	●	7.2	645	241	9.0	8.0 - 9.5
		225/40 R18	92	Y	●	7.1	637	230	8.0	7.5 - 9.0
		215/40 R18	89	W	●	7.7	629	218	8.0	7.0 - 8.5
		205/40 R18	86	W	●	7.6	621	212	8.0	7.0 - 8.0
	45	255/45 R18	103	Y	●	7.5	687	255	9.0	8.0 - 9.5
		245/45 R18	100	Y	●	7.4	677	243	8.0	7.5 - 9.0
		225/45 R18	95	Y	●	7.5	659	225	8.0	7.0 - 8.5
		215/45 R18	93	Y	●	7.4	651	213	7.0	7.0 - 8.0
	50	235/50 R18	101	Y	●	7.7	693	245	8.0	6.5 - 8.5
17	40	195/40 R17	81	W	●	7.5	588	200	7.0	6.5 - 7.5
		245/45 R17	99	W	●	7.7	652	243	8.0	7.5 - 9.0
	45	235/45 R17	97	W	●	7.6	644	236	8.0	7.5 - 9.0
		225/45 R17	94	W	●	7.8	634	225	8.0	7.0 - 8.5
		215/45 R17	91	W	●	7.7	626	213	7.0	7.0 - 8.0
50	215/50 R17	95	W	●	7.8	648	226	7.0	6.0 - 7.5	
16	45	205/45 R16	87	W	●	7.6	590	206	7.0	6.5 - 7.5
	55	205/55 R16	94	W	●	7.8	632	214	7.0	5.5 - 7.5
15	50	195/50 R15	82	V	-	7.6	577	201	6.0	5.5 - 7.0
	55	195/55 R15	85	W	-	7.7	595	201	6.0	5.5 - 7.0



# NT860 HIGH PERFORMANCE TIRE

Maximize Ride comfort and Fuel efficiency while maintaining Long mileage.  
NT860 guarantees a high level performance including ride comfort, long mileage and fuel savings.



## High Performance Tire

1. Excellent ride comfort
2. Long mileage
3. Lower fuel consumption



\*Ratings based on comparison to other Nitto products in the segment

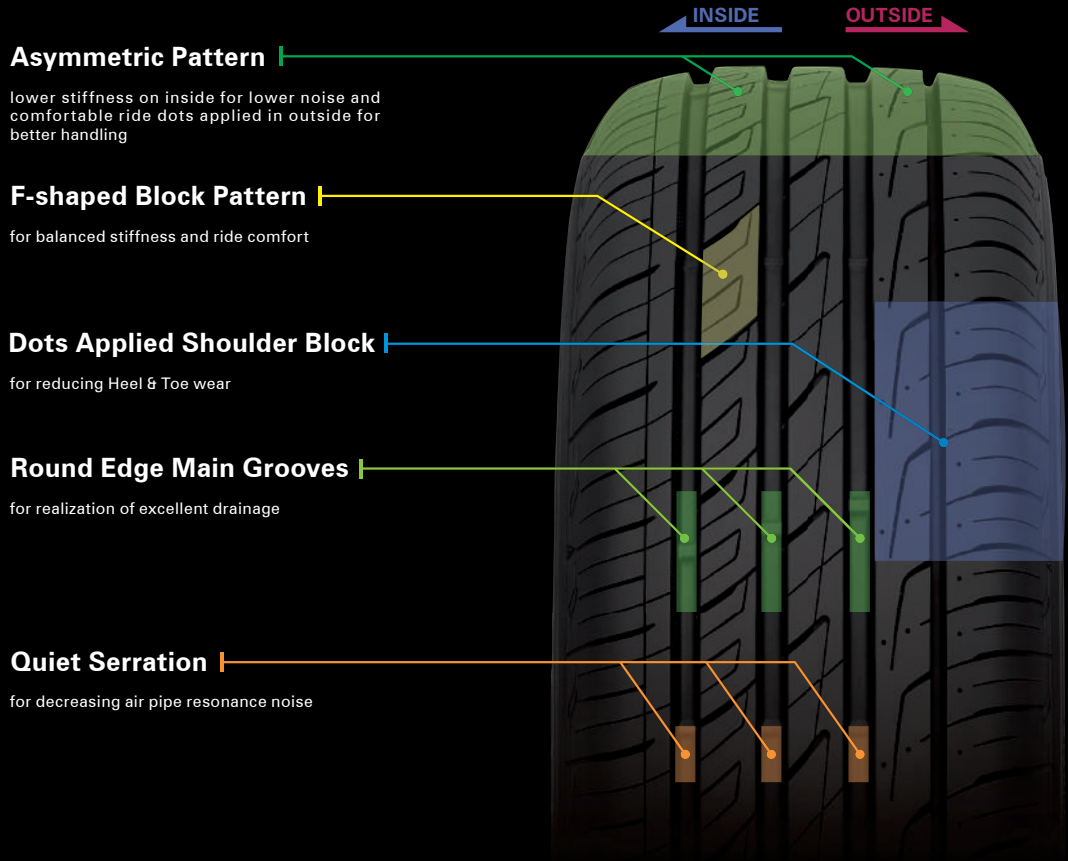
NEW





# NT850

## HIGH PERFORMANCE TIRE



### Asymmetric Pattern

lower stiffness on inside for lower noise and comfortable ride dots applied in outside for better handling

### F-shaped Block Pattern

for balanced stiffness and ride comfort

### Dots Applied Shoulder Block

for reducing Heel & Toe wear

### Round Edge Main Grooves

for realization of excellent drainage

### Quiet Serration

for decreasing air pipe resonance noise

Inch	Aspect Ratio	Tire Size	Load Index	Speed Symbol	RF/XL	Original Tread Depth (mm)	Inflated dimension		Measuring rim width (inch)	Approved Rim Width (inch)
							Overall diameter (mm)	Overall width (mm)		
16	60	225/60 R16	98	V	-	8.2	676	228	7.0	6.0 - 8.0
		215/60 R16	95	H	-	8.1	664	221	7.0	6.0 - 7.5
	65	215/65 R16	98	H	-	8.1	686	221	7.0	6.0 - 7.5
15	60	225/60 R15	96	H	-	8.2	651	228	7.0	6.0 - 8.0
		205/60 R15	91	H	-	8.0	627	209	6.0	5.5 - 7.5
		195/60 R15	88	H	-	7.9	615	201	6.0	5.5 - 7.0
	65	205/65 R15	94	H	-	7.8	647	209	6.0	5.5 - 7.5
		195/65 R15	91	H	-	7.9	635	201	6.0	5.5 - 7.0
		185/65 R15	88	H	-	7.8	621	189	6.0	5.0 - 6.5
		205/70 R15	96	H	-	8.1	669	209	6.0	5.0 - 7.0
14	60	225/60 R14	94	H	-	8.2	626	228	7.0	6.0 - 8.0
		205/60 R14	88	H	-	8.0	602	209	6.0	5.5 - 7.5
		185/60 R14	82	H	-	7.8	578	189	6.0	5.0 - 6.5
	65	185/65 R14	86	H	-	7.8	596	189	6.0	5.0 - 6.5
		175/65 R14	82	H	-	7.7	584	177	5.0	5.0 - 6.0
		195/70 R14	91	H	-	8.0	630	201	6.0	5.0 - 6.5
	70	185/70 R14	88	H	-	7.9	616	189	6.0	4.5 - 6.0
		175/70 R14	84	H	-	7.8	602	177	5.0	4.5 - 6.0
13	70	185/70 R13	86	H	-	7.9	590	189	6.0	4.5 - 6.0
		175/70 R13	82	H	-	7.8	576	177	5.0	4.5 - 6.0



# INVO LUXURY SPORT ULTRA HIGH PERFORMANCE TIRE

The INVO refused to compromise over every aspect of performance. State-of-the-art computer engineering created a tread pattern that reduces road noise, provides excellent comfort, and delivers exceptional traction.

1. Superior driving performance
2. Quiet and excellent comfort driving
3. Unique and aggressive tread pattern



\*Ratings based on comparison to other Nitto products in the segment







## LUXURY SPORT ULTRA HIGH PERFORMANCE TIRE

INSIDE OUTSIDE



### Optimum Pattern Arrangement

for low noise performance

### Large Block on Outside

for improved handling performance

### Effective Adoption of Sipe

for maintain mileage and uniform contact pressure

### Wet Performance

twin wide main grooves on inside for superior water drainage and wet performance

Inch	Aspect Ratio	Tire Size	Load Index	Speed Symbol	RF/XL	Original Tread Depth (mm)	Inflated dimension		Measuring rim width (inch)	Approved Rim Width (inch)
							Overall diameter (mm)	Overall width (mm)		
24	25	275/25 ZR24	96	W	●	7.9	748	270	10.0	10.0
	30	275/30 ZR24	101	W	●	7.9	781	272	10.0	9.0 - 10.0
		255/30 ZR24	97	W	●	7.9	766	253	9.0	8.5 - 9.5
22	25	295/25 R22	97	W	●	7.9	707	301	10.5	10.0 - 11.0
	30	285/30 ZR22	101	W	●	7.9	732	285	10.0	9.5 - 10.5
		275/30 ZR22	99	W	●	7.9	726	271	10.0	9.0 - 10.0
		265/30 ZR22	97	W	●	7.9	721	268	10.0	9.0 - 10.0
		255/30 R22	95	W	●	7.9	712	256	9.0	8.5 - 9.5
		245/30 ZR22	92	W	●	7.9	707	244	9.0	8.0 - 9.0
35	255/35 ZR22	99	W	●	7.9	738	252	9.0	8.5 - 10.0	
21	25	295/25 ZR21	96	Y	●	7.9	684	289	11.0	10.0 - 11.0
	30	285/30 ZR21	100	W	●	7.9	702	286	10.0	9.5 - 10.5
		255/30 ZR21	93	Y	●	7.9	687	260	9.0	8.5 - 9.5
35	245/35 ZR21	96	W	●	7.9	705	248	9.0	8.0 - 9.5	
20	25	345/25 ZR20	100	Y	-	7.9	677	347	13.0	12.0 - 13.0
		305/25 ZR20	97	Y	●	7.9	659	306	11.0	10.5 - 11.5
		295/25 ZR20	95	W	●	7.9	655	292	11.0	10.0 - 11.0
		285/25 ZR20	93	Y	●	7.2	650	295	11.0	10.5
		275/25 ZR20	91	Y	●	7.9	645	275	10.0	10.0
	30	285/30 ZR20	99	Y	●	7.2	680	290	10.0	9.5 - 10.5
		275/30 ZR20	97	W	●	7.9	673	270	10.0	9.0 - 10.0
		275/30 R20	97	W	●	8.2	674	270	10.0	9.0 - 10.0
		255/30 ZR20	92	Y	●	7.9	664	254	9.0	8.5 - 9.5
		245/30 ZR20	90	W	●	7.9	656	242	9.0	8.0 - 9.0
235/30 ZR20	88	Y	●	7.9	653	235	9.0	8.5		





**LUXURY SPORT ULTRA HIGH PERFORMANCE TIRE**

Inch	Aspect Ratio	Tire Size	Load Index	Speed Symbol	RF/XL	Original Tread Depth (mm)	Inflated dimension		Measuring rim width (inch)	Approved Rim Width (inch)	
							Overall diameter (mm)	Overall width (mm)			
20	35	315/35 ZR20	106	W	-	7.9	727	315	11.0	10.5 - 12.5	
		295/35 ZR20	101	W	-	7.9	714	301	11.0	10.0 - 11.5	
		275/35 ZR20	102	W	●	7.9	701	271	10.0	9.0 - 11.0	
		255/35 ZR20	97	Y	●	8.2	692	253	9.0	8.5 - 10.0	
	40	245/35 R20	95	W	●	8.2	679	244	9.0	8.0 - 9.5	
		275/40 R20	106	W	●	8.2	729	278	10.0	9.0 - 11.0	
		245/40 R20	99	W	●	8.2	705	246	9.0	8.0 - 9.5	
		255/45 ZR20	101	W	-	7.9	737	257	9.0	8.0 - 9.5	
19	25	245/45 ZR20	99	W	-	7.9	728	243	8.0	7.5 - 9.0	
		315/25 ZR19	98	Y	●	7.9	642	317	12.0	11.0 - 12.0	
	30	345/30 ZR19	105	Y	-	7.9	690	339	12.0	11.5 - 12.5	
		325/30 ZR19	105	Y	●	7.9	680	328	12.0	11.0 - 12.0	
		305/30 ZR19	102	Y	●	7.2	667	313	11.0	10.5 - 11.5	
		285/30 ZR19	98	W	●	7.9	655	288	10.0	9.5 - 10.5	
		275/30 ZR19	96	Y	●	7.2	649	278	10.0	9.0 - 10.0	
		265/30 ZR19	93	W	●	7.9	643	264	10.0	9.0 - 10.0	
	35	255/30 R19	91	Y	●	7.9	638	254	9.0	8.5 - 9.5	
		285/35 ZR19	99	W	-	7.9	679	287	10.0	9.5 - 11.0	
		275/35 ZR19	100	W	●	7.9	675	275	10.0	9.0 - 11.0	
		255/35 ZR19	96	Y	●	7.9	661	260	9.0	8.5 - 10.0	
		245/35 ZR19	93	Y	●	7.9	655	248	9.0	8.0 - 9.5	
		245/35 R19	93	W	●	7.9	655	248	9.0	8.0 - 9.5	
		235/35 ZR19	91	Y	●	7.9	647	241	9.0	8.0 - 9.5	
		235/35 ZR19	91	W	●	7.9	648	238	9.0	8.0 - 9.5	
		225/35 ZR19	88	Y	●	7.9	642	226	8.0	7.5 - 9.0	
		225/35 ZR19	88	W	●	7.9	642	226	8.0	7.5 - 9.0	
	40	255/40 ZR19	100	Y	●	7.9	690	256	9.0	8.5 - 10.0	
		245/40 ZR19	98	W	●	7.9	679	250	9.0	8.0 - 9.5	
225/40 ZR19		93	Y	●	7.9	665	226	8.0	7.5 - 9.0		
225/45 ZR19		96	W	●	7.9	685	227	8.0	7.0 - 8.5		
18	35	295/35 ZR18	99	W	-	7.9	663	301	11.0	10.0 - 11.5	
		275/35 ZR18	99	W	●	7.9	649	272	10.0	9.0 - 11.0	
		265/35 R18	97	W	●	8.2	642	265	10.0	9.0 - 10.5	
		255/35 R18	94	W	●	8.2	638	254	9.0	8.5 - 10.0	
	40	275/40 ZR18	99	W	-	7.9	677	278	10.0	9.0 - 11.0	
		255/40 ZR18	99	Y	●	8.2	662	259	9.0	8.5 - 10.0	
		245/40 R18	97	W	●	8.2	658	245	9.0	8.0 - 9.5	
		235/40 R18	91	W	-	8.2	647	242	9.0	8.0 - 9.5	
		225/40 R18	92	W	●	8.2	639	229	8.0	7.5 - 9.0	
		255/45 ZR18	99	W	-	7.9	687	255	8.5	8.0 - 9.5	
	45	245/45 R18	96	W	-	8.2	680	243	8.0	7.5 - 9.0	
		225/45 R18	91	W	-	8.2	660	227	8.0	7.0 - 8.5	
		245/50 ZR18	104	W	●	7.9	703	253	8.0	7.0 - 8.5	
		225/45 R18	91	W	-	8.2	635	228	8.0	7.0 - 8.5	
	17	40	245/40 ZR17	95	Y	●	8.2	628	246	9.0	8.0 - 9.5
			245/45 ZR17	95	W	-	7.9	655	244	8.0	7.5 - 9.0
45		235/45 ZR17	94	W	-	7.9	648	237	8.0	7.5 - 9.0	
		225/45 R17	91	W	-	8.2	635	228	8.0	7.0 - 8.5	
50	P255/50 ZR17	100	W	-	7.9	687	262	8.0	7.0 - 9.0		
16	55	225/55 R16	95	V	-	7.9	652	232	7.0	6.0 - 8.0	

# NT830

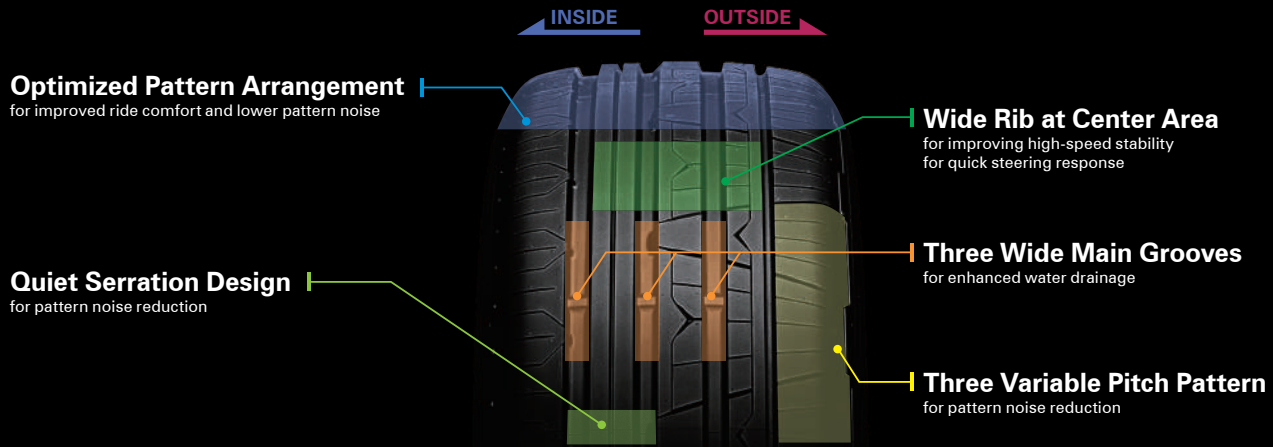
## LUXURY COMFORT TIRE

NT830 has been developed with Nitto tire's innovative tire design technology and it highly satisfies customer's requests for high speed stability, quiet and comfortable ride with attractive and unique tread pattern design.

1. Excellent high speed stability
2. Excellent ride comfort
3. Noise reduction with unique tread pattern



\*Ratings based on comparison to other Nitto products in the segment



Inch	Aspect Ratio	Tire Size	Load Index	Speed Symbol	RF/XL	Original Tread Depth (mm)	Inflated dimension		Measuring rim width (inch)	Approved Rim Width (inch)	
							Overall diameter (mm)	Overall width (mm)			
20	35	245/35 R20	95	W	●	8.1	680	248	9.0	8.0 - 9.5	
		235/35 R20	92	W	●	8.0	672	241	9.0	8.0 - 9.5	
19	30	285/30 R19	98	W	●	8.2	655	290	10.0	9.5 - 10.5	
		275/30 R19	96	W	●	8.1	649	278	10.0	9.0 - 10.0	
		265/30 R19	93	W	●	8.0	643	271	10.0	9.0 - 10.0	
	35	255/35 R19	96	W	●	8.2	661	260	9.0	8.5 - 10.0	
		245/35 R19	93	W	●	8.0	655	248	9.0	8.0 - 9.5	
		235/35 R19	91	W	●	8.0	647	241	9.0	8.0 - 9.5	
18	40	245/40 R19	98	W	●	7.7	679	248	9.0	8.0 - 9.5	
		265/35 R18	97	W	●	8.3	643	271	10.0	9.0 - 10.5	
		255/35 R18	94	W	●	8.2	635	260	9.0	8.5 - 10.0	
	35	245/35 R18	92	Y	●	7.7	629	248	9.0	8.0 - 9.5	
		245/40 R18	97	Y	●	7.7	653	248	9.0	8.0 - 9.5	
		235/40 R18	95	Y	●	7.7	645	241	9.0	8.0 - 9.5	
		225/40 R18	92	Y	●	7.7	637	230	8.0	7.5 - 9.0	
		245/45 R18	100	Y	●	7.7	677	243	8.0	7.5 - 9.0	
		235/45 R18	98	W	●	8.0	669	236	8.0	7.5 - 9.0	
	50	225/45 R18	95	Y	●	7.7	659	225	8.0	7.0 - 8.5	
		245/50 R18	104	Y	●	7.7	703	253	8.0	7.0 - 8.5	
		235/50 R18	101	Y	●	7.7	693	245	8.0	6.5 - 8.5	
245/40 R17		95	W	●	8.1	628	248	9.0	8.0 - 9.5		
17		40	195/40 R17	81	W	●	7.6	588	200	7.0	6.5 - 7.5
			245/45 R17	99	W	●	8.1	652	243	8.0	7.5 - 9.0
	235/45 R17		97	Y	●	7.7	644	236	8.0	7.5 - 9.0	
	45	225/45 R17	94	Y	●	7.7	634	225	8.0	7.0 - 8.5	
		215/45 R17	91	W	●	7.8	626	213	7.0	7.0 - 8.0	
		205/45 R17	88	W	●	7.7	616	208	7.0	6.5 - 7.5	
		235/50 R17	100	Y	●	7.7	668	245	8.0	6.5 - 8.5	
	50	225/50 R17	98	Y	●	7.2	658	233	7.0	6.0 - 8.0	
		215/50 R17	95	W	●	7.7	648	226	7.0	6.0 - 7.5	
		235/55 R17	103	W	●	7.9	690	245	8.0	6.5 - 8.5	
55	225/55 R17	101	W	●	7.8	680	233	7.0	6.0 - 8.0		
	215/55 R17	98	W	●	7.7	672	226	7.0	6.0 - 7.5		
	16	45	165/45 R16	74	W	●	7.1	554	165	6.0	5.0 - 6.0
		225/55 R16	99	W	●	7.8	654	233	7.0	6.0 - 8.0	
55	215/55 R16	97	Y	●	7.7	642	226	7.0	6.0 - 7.5		
	205/55 R16	94	W	●	7.6	632	214	7.0	5.5 - 7.5		
	60	225/60 R16	102	W	●	8.3	676	228	7.0	6.0 - 8.0	
		215/60 R16	99	W	●	8.2	664	221	7.0	6.0 - 7.5	
	205/60 R16	96	W	●	8.1	652	209	6.0	5.5 - 7.5		
65	205/65 R16	99	H	●	8.1	672	209	6.0	5.5 - 7.5		
	15	50	195/50 R15	86	V	●	7.5	577	201	6.0	5.5 - 7.0
		195/55 R15	89	V	●	7.5	595	201	6.0	5.5 - 7.0	
55	165/55 R15	75	V	-	7.2	563	170	5.0	4.5 - 6.0		



# NT05

## MAX PERFORMANCE TIRE

The NT05 is developed for enthusiasts with the pure focus to enhance the thrill of driving, and specially tuned for maximum dry traction.

1. Enhance the thrill of driving
2. Specially tuned for maximum dry traction
3. Provide pure sport driving



\*Ratings based on comparison to other Nitto products in the segment

**Center Wide Rib**  
for directional stability

**Shoulder Large Block**  
for high grip and cornering stability

**Wide 3D Grooves**  
for improving water drainage



Inch	Aspect Ratio	Tire Size	Load Index	Speed Symbol	RF/XL	Original Tread Depth (mm)	Inflated dimension		Measuring rim width (inch)	Approved Rim Width (inch)
							Overall diameter (mm)	Overall width (mm)		
20	30	305/30 ZR20	103	W	●	5.7	692	313	11.0	10.5 - 11.5
		315/35 ZR20	110	W	●	5.7	727	315	11.0	10.5 - 12.5
	35	275/35 ZR20	102	W	●	5.7	700	273	10.0	9.0 - 11.0
		255/35 ZR20	97	W	●	5.7	685	256	9.0	8.5 - 10.0
		275/40 R20	106	W	●	5.9	727	274	10.0	9.0 - 11.0
45	255/45 ZR20	101	W	-	5.7	738	256	9.0	8.0 - 9.5	
19	30	335/30 ZR19	103	W	-	5.7	683	338	12.0	11.5 - 12.5
		275/30 R19	96	W	●	5.9	648	272	10.0	9.0 - 10.0
	35	305/35 ZR19	102	W	-	5.7	697	313	11.0	10.0 - 12.0
		275/35 ZR19	100	W	●	5.7	677	274	10.0	9.0 - 11.0
		245/35 R19	93	W	●	5.9	655	245	9.0	8.0 - 9.5
		235/35 ZR19	91	W	●	5.7	646	242	9.0	8.0 - 9.5
	40	255/40 ZR19	100	W	●	5.7	687	260	9.0	8.5 - 10.0
		245/40 ZR19	98	W	●	5.7	679	245	9.0	8.0 - 9.5
18	35	225/40 ZR19	93	W	●	5.7	664	230	8.0	7.5 - 9.0
		295/35 ZR18	99	W	-	5.7	665	295	11.0	10.0 - 11.5
		285/35 ZR18	101	W	●	5.7	658	287	10.0	9.5 - 11.0
		275/35 ZR18	95	W	-	5.7	649	278	10.0	9.0 - 11.0
		275/35 ZR18	99	W	●	5.7	651	274	10.0	9.0 - 11.0
		265/35 R18	97	W	●	5.9	643	269	10.0	9.0 - 10.5
	40	255/35 ZR18	94	W	●	5.7	635	260	9.0	8.5 - 10.0
		295/40 ZR18	103	W	-	5.7	693	301	11.0	10.0 - 11.5
		275/40 ZR18	99	W	-	5.7	675	274	10.0	9.0 - 11.0
		245/40 R18	97	W	●	5.9	650	245	9.0	8.0 - 9.5
		235/40 R18	95	W	●	5.9	646	241	9.0	8.0 - 9.5
		225/40 R18	92	W	●	5.9	636	230	8.0	7.5 - 9.0
45	295/45 ZR18	112	W	●	5.7	723	291	10.0	9.5 - 11.0	
17	35	315/35 ZR17	102	W	-	5.7	649	315	11.0	10.5 - 12.5
		275/40 ZR17	98	W	-	5.7	650	274	10.0	9.0 - 11.0
	40	255/40 ZR17	98	W	●	5.7	637	257	9.0	8.5 - 10.0
		235/40 ZR17	90	W	-	5.7	621	243	9.0	8.0 - 9.5
		235/45 R17	97	W	●	5.7	644	236	8.0	7.5 - 9.0
45	225/45 R17	94	W	●	5.7	634	225	8.0	7.0 - 8.5	
15	50	205/50 ZR15	89	W	●	5.7	587	214	7.0	5.5 - 7.5

# NT01

## NITTO ROAD RACING TIRE

Maximize driving performance for road race

Dry Performance



Wet Performance



Braking



\*Ratings based on comparison to other Nitto products in the segment



Inch	Aspect Ratio	Tire Size	Load Index	Speed Symbol	RF/XL	Original Tread Depth (mm)	Inflated dimension		Measuring rim width (inch)	Approved Rim Width (inch)
							Overall diameter (mm)	Overall width (mm)		
20	30	315/30 ZR20	101	(Y)	-	5.0	698	320	11.0	10.5 - 11.5
	35	285/35 ZR20	100	(Y)	-	5.0	708	290	10.0	9.5 - 11.0
	40	255/40 ZR20	97	(Y)	-	5.0	712	260	9.0	8.5 - 10.0
19	30	325/30 ZR19	101	W	-	5.0	679	331	12.0	11.0 - 12.0
		305/30 ZR19	102	(Y)	●	5.0	667	313	11.0	10.5 - 11.5
	35	285/35 ZR19	103	W	●	5.0	683	290	10.0	9.5 - 11.0
		235/35 ZR19	87	(Y)	-	5.0	647	241	9.0	8.0 - 9.5
18	30	335/30 ZR18	102	W	-	5.0	659	343	12.0	11.5 - 12.5
		315/30 ZR18	98	W	-	5.0	647	320	11.0	10.5 - 11.5
		305/35 ZR18	101	W	-	5.0	671	313	11.0	10.0 - 12.0
	35	275/35 ZR18	95	W	-	5.0	649	278	10.0	9.0 - 11.0
		275/40 ZR18	99	W	-	5.0	677	278	10.0	9.0 - 11.0
	40	265/40 ZR18	101	W	●	5.0	669	271	10.0	9.0 - 10.5
		245/40 ZR18	93	W	-	5.0	653	248	9.0	8.0 - 9.5
235/40 ZR18		91	W	-	5.0	645	241	9.0	8.0 - 9.5	
	225/40 ZR18	88	W	-	5.0	637	230	8.0	7.5 - 9.0	
17	35	315/35 ZR17	102	W	-	5.0	652	320	11.0	10.5 - 12.5
		275/40 ZR17	98	W	-	5.0	652	278	10.0	9.0 - 11.0
	40	255/40 ZR17	94	W	-	5.0	636	260	9.0	8.5 - 10.0
		235/40 ZR17	90	W	-	5.0	620	241	9.0	8.0 - 9.5
		205/40 ZR17	80	W	-	5.0	596	212	8.0	7.0 - 8.0
	45	245/45 ZR17	95	W	-	5.0	652	243	8.0	7.5 - 9.0
		225/45 ZR17	91	W	-	5.0	634	225	8.0	7.0 - 8.5
	215/45 ZR17	87	W	-	5.0	626	213	7.0	7.0 - 8.0	
16	50	245/50 R16	97	V	-	5.0	652	253	8.0	7.0 - 8.5
15	45	225/45 ZR15	87	W	-	5.0	583	225	8.0	7.0 - 8.5
	50	205/50 R15	86	V	-	5.0	587	214	7.0	5.5 - 7.5
14	55	205/55 R14	85	V	-	5.0	582	214	7.0	5.5 - 7.5





# NT421Q LUXURY SUV TIRE

NT421Q, Luxury CUV/SUV Tire, is designed for owners of a variety of luxury CUVs and SUVs.

Unique and stylish asymmetric tread design provides quiet and comfortable ride while enhancing handling and stability while cornering.



NEW

## Luxury SUV Tire

1. Unique and aggressive tread pattern
2. Quiet and excellent comfort driving
3. Long mileage



\*Ratings based on comparison to other Nitto products in the segment





# NT421Q

## LUXURY SUV TIRE



### Wet Traction

The NT421Q keeps you safely connected to the road in inclement weather. The three wide grooves improve\* water evacuation, providing increased\* wet handling and traction.

### Siping

Siping is one of the most important tire technologies for wet traction. Nitto's revolutionary 3D multiwave sipe design provides traction without sacrificing handling.

### Higher Block Stiffness by Large Size Blocks

The NT421Q helps you safely navigate corners because the larger tread blocks on the exterior of the tire provide stability.

### Quiet Serration

reduces\* pipe resonance, resulting in a quieter ride.

\*In comparison to the original NT420S tire

Inch	Aspect Ratio	Tire Size	Load Index	Speed Symbol	RF/XL	Original Tread Depth (mm)	Inflated dimension		Measuring rim width (inch)	Approved Rim Width (inch)
							Overall diameter (mm)	Overall width (mm)		
21	35	295/35 R21	107	W	●	7.9	739	301	11.0	10.0 - 11.5
		275/35 R21	103	W	●	7.9	725	278	10.0	9.0 - 11.0
20	35	315/35 R20	110	W	●	7.9	728	320	11.0	10.5 - 12.5
	40	275/40 R20	106	W	●	8.0	728	278	10.0	9.0 - 11.0
	45	275/45 R20	110	W	●	8.1	756	273	9.0	8.5 - 10.5
		255/45 R20	105	W	●	7.9	738	255	9.0	8.0 - 9.5
		245/45 R20	103	W	●	7.8	728	243	8.0	7.5 - 9.0
	50	265/50 R20	111	V	●	8.1	774	277	9.0	7.5 - 9.5
19	45	275/45 R19	108	W	●	8.1	731	273	9.0	8.5 - 10.5
		235/45 R19	95	V	-	7.7	675	236	8.0	7.5 - 9.0
	50	265/50 R19	110	W	●	8.1	749	277	9.0	7.5 - 9.5
		255/50 R19	107	W	●	8.0	739	265	8.0	7.0 - 9.0
		225/55 R19	99	V	-	7.8	731	233	7.0	6.0 - 8.0
18	50	235/50 R18	97	V	-	7.8	693	245	8.0	6.5 - 8.5
		215/50 R18	92	V	-	7.5	673	226	7.0	6.0 - 7.5
	55	255/55 R18	109	W	●	8.1	737	265	8.0	7.0 - 9.0
		235/55 R18	104	V	●	7.9	715	245	8.0	6.5 - 8.5
	60	235/60 R18	107	W	●	8.0	739	240	7.0	6.5 - 8.5
		225/60 R18	104	V	●	7.9	727	228	7.0	6.0 - 8.0
17	55	235/55 R17	99	V	-	7.9	690	245	8.0	6.5 - 8.5
		225/55 R17	101	V	●	7.8	680	233	7.0	6.0 - 8.0
	60	255/60 R17	110	V	●	8.2	738	260	8.0	7.0 - 9.0
		235/60 R17	106	H	●	8.0	714	240	7.0	6.5 - 8.5
		225/60 R17	103	V	●	7.9	702	228	7.0	6.0 - 8.0
	65	215/60 R17	96	V	-	7.8	690	221	7.0	6.0 - 7.5
		235/65 R17	108	V	●	8.1	738	240	7.0	6.5 - 8.5
16	60	225/65 R17	106	V	●	8.0	724	228	7.0	6.0 - 8.0
		235/60 R16	100	V	-	8.0	688	240	7.0	6.5 - 8.5
		215/60 R16	99	V	●	7.8	664	221	7.0	6.0 - 7.5



# NT420S

## SUV TIRE

NT420S is designed for inch-up application of CUVs & SUVs. Optimized stylish functional tread pattern design provides superior driving performance by determining the optimum block arrangement.

1. Unique asymmetric tread pattern
2. Stylish sidewall design
3. Superior driving performance



\*Ratings based on comparison to other Nitto products in the segment



Inch	Aspect Ratio	Tire Size	Load Index	Speed Symbol	RF/XL	Original Tread Depth (mm)	Inflated dimension		Measuring rim width (inch)	Approved Rim Width (inch)
							Overall diameter (mm)	Overall width (mm)		
24	30	285/30 R24	103	V	●	8.5	784	280	10.0	9.5 - 10.5
		315/35 R24	114	H	●	10.9	831	311	11.0	10.5 - 12.5
	35	305/35 R24	112	H	●	10.8	824	307	11.0	10.0 - 12.0
		295/35 R24	110	H	●	10.7	815	296	11.0	10.0 - 11.5
		285/35 R24	108	V	●	8.5	810	290	10.0	9.5 - 11.0
23	40	305/40 R23	115	H	●	10.8	828	313	11.0	10.0 - 12.0
22	30	295/30 R22	103	V	●	8.6	737	301	11.0	10.0 - 11.0
		285/35 R22	106	W	●	8.5	759	290	10.0	9.5 - 11.0
	35	265/35 R22	102	V	●	8.3	745	271	10.0	9.0 - 10.5
		305/40 R22	114	H	●	10.8	803	313	11.0	10.0 - 12.0
		285/40 R22	110	V	●	8.5	787	290	10.0	9.5 - 11.0
		285/45 R22	114	H	●	10.6	815	285	10.0	9.0 - 10.5
20	40	285/40 R20	108	V	●	8.5	736	290	10.0	9.5 - 11.0
		255/40 R20	101	V	●	8.2	712	260	9.0	8.5 - 10.0
	45	275/45 R20	110	Y	●	8.0	756	273	9.0	8.5 - 10.5
		255/45 R20	105	V	●	8.7	738	255	9.0	8.0 - 9.5
		305/50 R20	120	H	●	10.8	814	316	10.0	8.5 - 11.0
	50	285/50 R20	116	H	●	10.6	794	297	9.0	8.0 - 10.0
		265/50 R20	111	V	●	8.8	774	277	9.0	7.5 - 9.5
		255/50 R20	109	V	●	8.7	764	265	8.0	7.0 - 9.0
		275/55 R20	117	H	●	10.5	810	284	9.0	7.5 - 9.5
19	45	275/45 R19	108	Y	●	7.5	731	273	9.0	8.5 - 10.5
		255/50 R19	107	V	●	8.7	739	265	8.0	7.0 - 9.0
	55	275/55 R19	111	V	-	8.9	785	284	9.0	7.5 - 9.5
		255/55 R19	111	V	●	8.7	763	265	8.0	7.0 - 9.0
18	50	255/50 R18	106	V	●	8.7	713	265	8.0	7.0 - 9.0
		255/55 R18	109	V	●	8.7	737	265	8.0	7.0 - 9.0
	60	235/55 R18	104	V	●	8.5	715	245	8.0	6.5 - 8.5
		265/60 R18	110	V	-	8.8	775	272	8.0	7.5 - 9.5
17	60	275/60 R17	110	V	-	8.9	762	279	8.0	7.5 - 9.5
		265/65 R17	112	V	-	8.8	776	272	8.0	7.5 - 9.5
	65	225/65 R17	106	V	●	8.7	724	228	7.0	6.0 - 8.0
16	60	275/60 R16	109	V	-	8.9	736	284	8.0	7.5 - 9.5
15	50	P295/50 R15	105	H	-	9.7	677	305	10.0	8.0 - 10.5
	60	P275/60 R15	107	H	-	8.9	709	282	8.0	7.5 - 9.5



# TERRA GRAPPLER

## ALL-TERRAIN TIRE

The Terra Grappler offers all-terrain performance. It provides balanced performance in all weather conditions over various terrains.

1. Exceptional driving performance
2. Excellent ride comfort
3. Quiet driving



\*Ratings based on comparison to other Nitto products in the segment

### High-density Sipes

for excellent wet and snow traction  
for hydroplaning resistance

### Robust Buttress

attractive appearance



### Coupling Joints

increased stability at highway speeds

### Slant Grooves

for excellent wet traction braking

Inch	Aspect Ratio	Tire Size	Load Index	Speed Symbol	RF/XL	Original Tread Depth (mm)	Inflated dimension		Measuring rim width (inch)	Approved Rim Width (inch)
							Overall diameter (mm)	Overall width (mm)		
24	35	P305/35 R24	112	S	●	11.0	826	309	11.0	10.0 - 12.0
	40	285/40 R24	112	S	●	10.8	838	281	10.0	9.5 - 11.0
	50	LT315/50 R24	123	R	-	12.3	925	327	10.0	8.5 - 11.0
22	45	P305/45 R22	118	S	●	11.0	830	302	10.0	9.5 - 11.5
		285/45 R22	114	S	●	10.8	814	284	10.0	9.0 - 10.5
20	45	275/45 R20	110	T	●	11.1	759	271	9.0	8.5 - 10.5
	50	285/50 R20	116	S	●	10.8	794	297	9.0	8.0 - 10.0
		265/50 R20	111	S	●	10.6	775	273	9.0	7.5 - 9.5
		LT305/55 R20	121	S	-	12.4	844	316	10.0	8.5 - 11.0
	55	305/55 R20	120	S	●	10.6	843	315	10.0	8.5 - 11.0
		275/55 R20	117	S	●	10.3	808	282	9.0	7.5 - 9.5
	60	LT325/60 R20	121	R	-	12.4	892	328	10.0	9.0 - 12.0
65	LT275/65 R20	126	R	-	12.4	866	279	8.0	7.5 - 9.5	
18	55	255/55 R18	109	S	●	10.1	736	263	8.0	7.0 - 9.0
	60	LT325/60 R18	119	S	-	12.4	838	326	10.0	9.0 - 12.0
		305/60 R18	120	S	●	11.0	824	311	9.0	8.5 - 11.0
		285/60 R18	120	S	●	10.8	795	292	9.0	8.0 - 10.0
	65	LT355/65 R18	125	R	-	13.1	932	356	11.0	10.0 - 13.0
		LT325/65 R18	121	R	-	13.1	886	330	10.0	9.0 - 12.0
		LT275/65 R18	123	R	-	12.4	813	275	8.0	7.5 - 9.0
275/65 R18		120	S	●	10.7	814	281	8.0	7.5 - 9.5	
17	65	37X1250 R17	124	R	-	13.1	926	341	10.0	8.5 - 11.0
		P265/65 R17	110	S	-	10.2	776	270	8.0	7.5 - 9.5
		P245/65 R17	105	T	-	10.0	748	246	7.0	7.0 - 8.5
	70	LT325/70 R17	122	R	-	13.1	889	333	10.0	8.5 - 11.0
		LT305/70 R17	125	R	-	13.1	863	314	9.0	8.0 - 9.5
		LT295/70 R17	123	R	-	13.1	843	308	9.0	7.5 - 10.0
		LT285/70 R17	126	R	-	13.1	832	292	8.5	7.5 - 9.0
		P285/70 R17	117	S	-	10.6	831	291	9.0	7.5 - 9.5
		LT265/70 R17	121	R	-	12.4	803	278	8.0	7.0 - 8.5
		P265/70 R17	113	S	-	10.4	802	271	8.0	7.0 - 9.0
	P245/70 R17	108	S	-	10.2	770	247	7.0	6.5 - 8.0	
75	LT285/75 R17	121	Q	-	13.1	860	287	8.0	7.5 - 9.5	
80	LT235/80 R17	120	R	-	12.1	805	233	7.0	6.0 - 7.5	
16	70	LT305/70 R16	124	Q	-	13.1	830	315	9.0	8.0 - 9.5
		265/70 R16	112	S	-	10.4	779	268	8.0	7.0 - 9.0
	75	LT315/75 R16	121	Q	-	13.1	876	313	9.0	8.0 - 11.0
		LT295/75 R16	123	Q	-	13.1	845	298	8.0	7.5 - 9.5
		LT285/75 R16	122	Q	-	13.1	830	288	8.0	7.5 - 9.0
		LT285/75 R16	126	Q	-	13.1	832	290	8.0	7.5 - 9.0
		LT265/75 R16	123	Q	-	12.4	803	271	8.0	7.0 - 8.0
LT265/75 R16	119	Q	-	12.4	801	273	8.0	7.0 - 8.0		



# DURA GRAPPLER HIGHWAY TERRAIN TIRE

The Dura Grappler is a highway terrain tire that has been developed to offer good ride comfort, quiet performance and long wear life to meet the demands for Light Trucks.



## *Highway Terrain Tire*

1. Long mileage
2. Excellent ride comfort
3. Quiet driving

Dry Performance



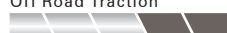
Tread Life



Ride Comfort



Off Road Traction



\*Ratings based on comparison to other Nitto products in the segment





# DURA GRAPPLER

## HIGHWAY TERRAIN TIRE

### Multi Slanted Block

for good traction  
for irregular wear prevention

### Traction Slot

for aid in traction

### High Stiffness Rib

for low noise

### Block Pattern

for good ride comfort

### Waved Sipe

for good traction



Inch	Aspect Ratio	Tire Size	Load Index	Speed Symbol	RF/XL	Original Tread Depth (mm)	Inflated dimension		Measuring rim width (inch)	Approved Rim Width (inch)
							Overall diameter (mm)	Overall width (mm)		
22	50	LT285/50 R22	121	R	-	12.7	845	297	9.0	8.0 - 10.0
20	60	LT275/60 R20	123	R	-	12.7	839	277	8.0	7.5 - 9.5
	65	LT275/65 R20	126	R	-	12.7	865	278	8.0	7.5 - 9.5
19	45	285/45 R19	107	V	-	9.7	739	285	10.0	9.0 - 10.5
	50	255/50 R19	103	V	-	9.7	739	265	8.0	7.0 - 9.0
18	55	255/55 R18	109	V	●	9.7	737	265	8.0	7.0 - 9.0
		235/55 R18	100	V	-	9.5	715	245	8.0	6.5 - 8.5
	60	LT325/60 R18	124	R	-	12.7	839	328	10.0	9.0 - 12.0
		265/60 R18	110	H	-	10.2	775	272	8.0	7.5 - 9.5
	65	LT275/65 R18	123	Q	-	13.3	817	277	8.0	7.5 - 9.0
		235/65 R18	106	T	-	9.9	763	240	7.0	6.5 - 8.5
	70	LT275/70 R18	125	R	-	12.7	844	280	8.0	7.0 - 8.5
		265/70 R18	116	S	-	10.4	829	272	8.0	7.0 - 9.0
	255/70 R18	117	S	●	10.3	815	260	8.0	6.5 - 8.5	
17	60	255/60 R17	110	V	●	9.7	738	260	8.0	7.0 - 9.0
	65	275/65 R17	115	T	-	10.3	790	279	8.0	7.5 - 9.5
		265/65 R17	112	T	-	10.2	776	272	8.0	7.5 - 9.5
		P245/65 R17	105	S	-	10.0	750	248	7.0	7.0 - 8.5
	70	LT285/70 R17	126	R	-	13.4	833	292	9.0	7.5 - 9.0
		LT265/70 R17	121	Q	-	13.3	804	272	8.0	7.0 - 8.5
		P265/70 R17	113	S	-	10.4	804	272	8.0	7.0 - 9.0
		LT245/70 R17	119	R	-	12.5	776	248	7.0	6.5 - 8.0
75	LT245/75 R17	121	Q	-	13.0	800	248	7.0	6.5 - 7.5	
80	LT235/80 R17	120	R	-	12.4	808	235	7.0	6.0 - 7.5	
16	60	235/60 R16	100	H	-	9.9	688	240	7.0	6.5 - 8.5
	65	255/65 R16	109	H	-	10.1	738	260	8.0	7.0 - 9.0
		LT305/70 R16	124	R	-	13.4	832	319	9.0	8.0 - 9.5
	70	275/70 R16	114	H	-	10.5	792	279	8.0	7.0 - 9.0
		265/70 R16	112	H	-	10.4	778	272	8.0	7.0 - 9.0
		245/70 R16	107	S	-	10.2	750	248	7.0	6.5 - 8.0
		235/70 R16	106	H	-	10.1	736	240	7.0	6.0 - 8.0
		LT225/70 R16	107	H	●	10.0	722	228	7.0	6.0 - 7.5
		215/70 R16	100	H	-	9.9	708	221	7.0	5.5 - 7.0
	75	LT285/75 R16	126	R	-	13.4	835	292	8.0	7.5 - 9.0
		LT265/75 R16	123	Q	-	13.3	806	273	8.0	7.0 - 8.0
		LT245/75 R16	120	R	-	12.4	774	248	7.0	6.5 - 8.0
85	LT235/85 R16	120	R	-	12.4	806	235	7.0	6.0 - 7.5	
15		31X1050 R15	109	S	-	12.7	775	268	9.0	7.0 - 9.0
	70	225/70 R15	100	T	-	10.0	697	228	7.0	6.0 - 7.5
		215/70 R15	98	H	-	9.9	683	221	7.0	5.5 - 7.0
	75	LT235/75 R15	104	S	-	11.4	733	235	7.0	6.0 - 7.0

# Trail Grappler M/T

## MUD TERRAIN TIRE

The Trail Grappler M/T was developed to provide excellent balance for off-road performance and on-road comfort. During development, special attention was given to noise, ride and wear performance.

1. Unique and aggressive tread pattern
2. Tough tire body
3. Excellent off-road and on-road performance balance



\*Ratings based on comparison to other Nitto products in the segment

### Stone Ejector

aids in tread protection, stone rejection and mud clearing

### 3D Tapered Groove

adds additional biting edges for off-road performance



### Reinforced Shoulder Groove

adds additional off-road and all season performance without compromising block stiffness

### Deep Center Sipe

maintains road surface contact in wet conditions

### Z Groove

provides lateral stability and mud traction

Inch	Aspect Ratio	Tire Size	Load Index	Speed Symbol	RF/XL	Original Tread Depth (mm)	Inflated dimension		Measuring rim width (inch)	Approved Rim Width (inch)
							Overall diameter (mm)	Overall width (mm)		
20	55	LT305/55 R20	121	P	-	15.5	850	316	10.0	8.5 - 11.0
18	65	35X1250 R18	118	P	-	16.7	883	318	10.0	8.5 - 11.0
		LT285/65 R18	121	P	-	15.0	833	292	9.0	8.0 - 10.0
17	70	LT295/70 R18	119	P	-	15.5	877	299	9.0	7.5 - 10.0
		35X1250 R17	121	P	-	16.7	883	318	10.0	8.5 - 11.0
		LT295/70 R17	121	P	-	15.5	852	299	9.0	7.5 - 10.0
16	75	LT265/70 R17	121	P	-	15.0	810	272	8.0	7.0 - 8.5
		LT315/75 R16	121	P	-	16.0	884	313	9.0	8.0 - 11.0
		LT285/75 R16	116	P	-	15.2	840	286	8.0	7.5 - 9.0
16	75	LT265/75 R16	119	P	-	15.0	810	267	8.0	7.0 - 8.0
		33X1250 R15	108	P	-	16.7	832	318	10.0	8.5 - 11.0

POR - Professional Off Road use.



# Mud Grappler

## EXTREME MUD TERRAIN TIRE

The Mud Grappler extreme terrain tire provides reliable off-road traction over various terrains, whether it is dirt, rocks or mud.

The massive side-lugs and 3-polyester sidewall construction add more protection to help prevent sidewall punctures when facing the most challenging off-road obstacles.

1. Unique and aggressive tread pattern
2. Tough tire body
3. Reliable off-road performance



\*Ratings based on comparison to other Nitto products in the segment

### Circumferential Grooves

increase lateral grip on off-road or mud

### Shelf in Groove

improve Self-cleaning capability on mud

### Claw-shaped Biting Edge

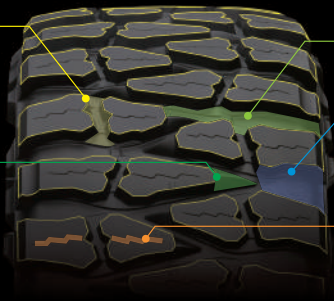
improves traction on mud

### Extra Wide Lateral Groove

for excellent traction and self-cleaning capability on mud

### Long Zigzag Siping

improve traction on wet



Inch	Aspect Ratio	Tire Size	Load Index	Speed Symbol	RF/XL	Original Tread Depth (mm)	Inflated dimension		Measuring rim width (inch)	Approved Rim Width (inch)
							Overall diameter (mm)	Overall width (mm)		
20	70	37X1350 R20	121	P	-	16.7	934	345	11.0	8.5 - 11.0
		35X1250 R20	121	P	-	16.7	883	318	10.0	8.5 - 11.0
		33X1250 R20	114	P	-	16.7	832	318	10.0	8.5 - 11.0
18	70	33X1250 R18	118	P	-	16.7	832	318	10.0	8.5 - 11.0
16		LT305/70 R16	118	P	-	16.7	840	311	9.0	8.0 - 9.5
15	70	35X1450 R15	116	P	-	16.7	883	367	12.0	10.0 - 13.0
		33X1350 R15	109	P	-	16.7	832	345	11.0	9.5 - 12.0

POR - Professional Off Road use.

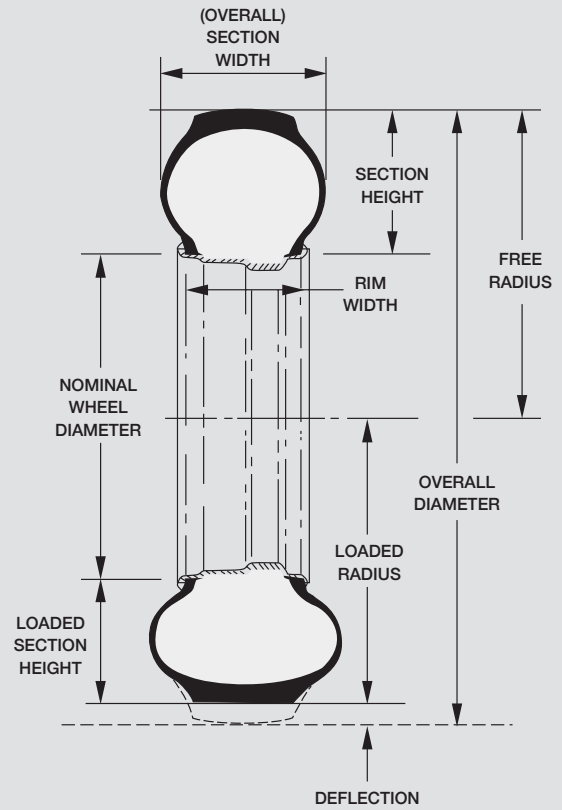


# GENERAL INFORMATION

## TIRE SIZE DESIGNATIONS

**For example :**

- \*215/60 R 16 95H — Speed Symbol (Max 210km/h)  
 — Load Index (690kg)  
 — Nominal Rim Diameter (inches)  
 — Radial Construction  
 — Aspect Ratio (60%)  
 — Nominal Section Width (mm)
- \*P 205/55 R 16 — Nominal Rim Diameter (inches)  
 — Radial Construction  
 — Aspect Ratio (55%)  
 — Nominal Section Width (mm)  
 — Passenger Car Type Tire  
 \* LT : Light Truck Type Tire
- \*35 X 12.50 R 17 — Nominal Rim Diameter (inches)  
 — Radial Construction  
 — Nominal Section Width (inches)  
 — Nominal Overall Diameter (inches)



## LOAD INDEX

Like insufficient air pressure, vehicle overloading can lead to premature wear and tire failure. The vehicle registration documents may detail among other things the maximum kerbside weight of the vehicle in kilograms as well as the maximum axle weight in kilograms for the front and the rear axles. Overloading can easily occur when going on holiday with a full car, roof rack and/or caravan.

LI	kg	LI	kg	LI	kg	LI	kg	LI	kg
70	335	85	515	100	800	115	1215	130	1900
71	345	86	530	101	825	116	1250	131	1950
72	355	87	545	102	850	117	1285	132	2000
73	365	88	560	103	875	118	1320	133	2060
74	375	89	580	104	900	119	1360	134	2120
75	387	90	600	105	925	120	1400	135	2180
76	400	91	615	106	950	121	1450	136	2240
77	412	92	630	107	975	122	1500	137	2300
78	425	93	650	108	1000	123	1550	138	2360
79	437	94	670	109	1030	124	1600	139	2430
80	450	95	690	110	1060	125	1650	140	2500
81	462	96	710	111	1090	126	1700	141	2575
82	485	97	730	112	1120	127	1750	142	2650
83	487	98	750	113	1150	128	1800	143	2725
84	500	99	775	114	1180	129	1850	144	2800



## SPEED SYMBOL

The tires fitted by a vehicle manufacturer have the appropriate speed symbol considering the maximum speed. It is possible to switch to the same tire size with a higher speed index, but tires should never be substituted for tires with a speed symbol equal to less than the maximum speed of the vehicle (incl. variation).

Exceptions are M+S radial winter tires: in this case, care must be taken not to exceed the speeds indicated by the symbol on the M+S tire. Vehicles capable of higher speed than M+S tire speed symbol indicates, must have a notice, visible to the driver indicating the maximum speeds of the M+S tires. In some countries this is a legal requirement.

Speed Symbol	J	K	L	M	N	P	Q	R	S	T	U	H	V	W	Y	(Y)
Maximum Speed km/h	100	110	120	130	140	150	160	170	180	190	200	210	240	270	300	OVER 300

For applications outside the range of the Y speed symbol, the service conditions (including the actual speed capabilities, load capabilities and the relevant inflation pressure) for vehicle characteristics will be agreed between the vehicle and tyre manufactures when using ZR marked tyres with a service description within brackets, for example "(95Y)".

All uses of Performance characteristics in this catalogue are displayed as a guide only, to allow comparison with other products of the same category. Their purpose is to help select the most appropriate tire. No guarantee of performance can be inferred from these characteristics.

All NITTO brand tires are subject to continuous development. While every effort is made to describe goods and services accurately in this publication, no warranty is given as to accuracy and no responsibility will be accepted for any error or omission. TOYO TIRES reserves the right to amend the specification of tires without notice.

## PLY RATING

"Ply Rating" is used to identify a given tire with its maximum recommended load when used in a specific type of service. It is an index of tire strength and does not necessarily represent the number of cord plies in the tire.

## LOAD RANGE DESIGNATION - PLY RATING EQUIVALENCY TABLE

The Load Range is merely a letter used to correspond with a ply rating.

PLY RATING	6	8	10	12
LOAD RANGE	C	D	E	F

## SAFETY PRECAUTIONS

### Usage Recommendations for Semi Racing Tires

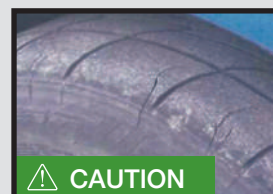
#### STREET USE

Semi racing tires are designed with a reduced tread depth and a special tread rubber compound for optimal dry weather traction. Therefore, it is important to frequently check the available tread depth because semi racing tires will wear out much sooner and offer less wet weather grip than regular passenger-car tires. Never use these tires, or any tires, on the street if they are worn down to the wear indicator bars, i.e., the available tread depth is no more than 1.6mm (2/32nds of an inch). Use extreme caution and reduced speeds when driving in wet conditions. Never mix bias and radial tires on the same vehicle.

### Recommendation on the Proper Use and Handling of Certain NITTO (NITTO NT01 / NT05)

This advisory addresses the proper use and handling of these tires in colder climates. Tires exposed to temperatures below -9°C will lose rubber compound flexibility. Under certain conditions, it may even experience cracking (see image right).

The rubber compounds used in these tires have unique properties that, when compared to other tires, can cause them to lose some of their flexibility when used or handled in conditions below -9°C. This loss in flexibility can lead to potential cracking and other damage to the tire.



**TO MINIMIZE THE CHANCES OF THIS HAPPENING, CONSUMERS AND INSTALLERS ARE ADVISED TO FOLLOW THESE INSTRUCTIONS:**

1. Do not move or operate the car with these tires in conditions below -9°C.

**ALWAYS INSPECT FOR SIGNS OF CRACKING! NEVER USE TIRES THAT HAVE CRACKED!**

2. Avoid moving these tires in conditions below -9°C.
3. Before mounting or dismounting, store these tires for at least 24 hours in a temperature-controlled environment of 20°C or warmer, and **ALWAYS INSPECT FOR SIGNS OF CRACKING! NEVER USE TIRES THAT HAVE CRACKED!**
4. Remove these tires from the vehicle and deflate to half the normal air pressure during prolonged periods of non-use or storage.

### Consumer Safety Advisory for Lifted Light Trucks : Rollover Propensity of Lifted Light Trucks

Consumers should be aware that the installation of larger diameter tires, including off-road type tires, combined with modified suspensions (lift kits) for increased off-road ground clearance will adversely affect the handling and maneuverability characteristics of the vehicle compared to the factory-equipped (original) vehicle. When vehicles, especially light trucks, are lifted, the center of gravity is heightened, thus making them more prone to rollover. Rollover propensity is further increased with full passenger and/or cargo loads. Other aspects of handling and maneuverability may also be affected by altering the original manufacturer's design. As with any vehicle, **Extreme Care must be used to prevent loss of control or rollover during sharp turns or abrupt maneuvers.** Always wear seat belts and drive safely, recognizing that reduced speeds and specialized driving techniques may be required. **The installation of larger tire and wheel combinations will reduce the effectiveness of anti-lock braking systems and increase stopping distance. Failure to safely drive any vehicle equipped with a lift kit may result in an accident resulting in serious injury or death.** Do not drive a lifted vehicle unless you are familiar with its unique handling characteristics and are confident of your ability to maintain control under all driving conditions. Some modifications (and combinations of modifications) are not recommended and may not be permitted in your state. Consult your owner's manual, the instructions accompanying the lift kit, and state laws before undertaking any vehicle suspension modifications. **You are responsible for the legality and safety of the vehicle you modify using lift kit and tire modifications.**

**WARNING!**





## TIRE CARE AND MAINTENANCE

### Proper care of tires increases road safety and tire life.

Key Advice:

#### Air Pressure

Your safety depends on maintaining the prescribed air pressure. Always follow the recommendations of the vehicle manufacturer unless you have specific written advice from a tire maker.

A tire driven on with insufficient air pressure is a serious safety risk. The increased deformation of the casing leads to excessive heat build up which can result in sudden tire failure. Additionally wear will increase especially in the shoulder area of the tread necessitating premature removal.

Over inflated tires will have reduced road performance and inferior shock absorption. Additionally, wear will increase in the centre of the tread leading to premature removal.

#### Most important points (recommendations):

1. Measure air pressure on cold tires (before driving).
2. Air pressure must correspond to axle load (see operating instructions).
3. Air pressure must be kept equal across an axle.
4. Check air pressure at least once per month.
5. Check air pressure before each long trip and increase by 20 kPa (0.2 bar), so that the tire temperature can be kept low at high speed.
6. After checking air pressure always refit the valve caps, as they prevent dust and dirt from entering and compromising air tightness. Valve caps with a sealing ring are best, as they act as a secondary air seal assisting the tire valves.







**TOYO TIRE & RUBBER CO., LTD.**

2-13, Fujinoki 2-chome, Itami City, Hyogo 664-0847, Japan  
<http://www.toyo-rubber.co.jp/english/>





Published in: April, 2018



**NITTO**

FUELED BY ENTHUSIASTS



# NISSAN

## FUELED BY ENTHUSIASTS

2018-2019

*Tire Catalogue*

