



BLACKLION
PASSENGER & LIGHT TRUCK TIRE
CATALOG

BLACKLION
PASSENGER & LIGHT TRUCK TIRE
CATALOG

Tire Maintenance and Safety

Tire maintenance can help to improve the performance and extend the life of your tires. More importantly, taking just a few minutes a month to inspect your tires can help you to avoid tire failures. Some of the key aspects of preventative maintenance include:

1. Inflation Pressure - It's important to maintain the correct inflation pressure in your tires as under-inflation or over-inflation may lead to a tire failure. The correct inflation pressure of your tires is specified by the vehicle manufacturer and is typically shown on the vehicle door ledge or in the owner's manual. Tires may lose air over time due to the permeability of rubber so it is important to check your tire pressure regularly, at least once a month including the spare. Ensure to check the pressure when the tires are cold (i.e. have not been driven on).

2. Loading - Do not overload your vehicle. Overloading creates excessive stress leading to heat generation and can eventually lead to a tire failure. Please check the tire placard or vehicle owner's manual for the maximum recommended load for your vehicle.

Speed Rating

The speed symbol indicates the maximum speed rating at which a tire can carry a load corresponding to its Load Index under specific service conditions.

** For tires with speed symbols W and Y, "ZR" may or may not appear within the size designation. For tires with a maximum speed above 186 MPH, a "ZR" must appear in the size designation.

Examples of similar size markings, with and without service descriptions, and showing different maximum speeds are shown.

SPEED RATING AND MAX SPEED EQUIVALENT			
SPEED RATING	MAX SPEED (km/h)	SPEED RATING	MAX SPEED (km/h)
A1	5	K	110
A2	10	L	120
A3	15	M	130
A4	20	N	140
A5	25	P	150
A6	30	Q	160
A7	35	R	170
A8	40	S	180
B	50	T	190
C	60	U	200
D	65	H	210
E	70	V	240
F	80	W	270
G	90	Y	300
J	100	ZR	>240

205 / 55 R16 94V DOT

- 1
- 2
- 3
- 4
- 5
- 6
- 7

- 1 Tread Section Width (mm)**
The first number in this series refers to the tire's section width, or the distance from sidewall edge to sidewall edge, measured in millimeters up and over the tire's tread. In this example, the tire is 205 mm wide. Generally speaking, the larger this number is the wider the tire will be.
- 2 Aspect Ratio (ratio of sidewall height to width)**
The aspect ratio refers to the height of the sidewall which is labeled as a percentage of the section width. In this example, the sidewall height is 55% of the 205 section width. This number can be indicative of a tire's purpose. Lower numbers, like 55 or less, mean a short sidewall for improved steering response and better overall handling.
- 3 Internal Construction**
In this example, the "R" designates this tire as a radial tire. Radial tires have layers of fabric whose cords run at right angles to the circumference of the tire and whose tread is strengthened by additional layers around the circumference making it the most common type of automotive tire.
- 4 Rim Diameter**
The wheel (or rim) diameter specifies the size, in inches for which the tire was sized. In this example, the tire will fit a 16 inch wheel. Pay particular attention to this number if you plan on changing your wheel size.
- 5 Load Index**
Load Index indicates the maximum load carrying capacity of the tire; the larger the number, the higher the load capacity. It is very important to only install tires with a load index that meets or exceeds your vehicle manufacturer's specification.
- 6 Speed Rating**
The speed rating designates the maximum speed at which a properly installed and inflated tire can be driven on. In this example, the speed rating is V which means it has a speed rating of 240 km/h.
- 7 U.S. Department of Transportation (DOT) Markings**
The DOT code is used by the Department of Transportation (DOT) to track the tire production for recall purposes. If a tire proves to be defective, this number helps keep track of where these tires ended up so buyers can be notified of the problem. This code represents the manufacturer and the plant it was manufactured at (KE) and the size (B0). At the end of the DOT code you will find a four-digit number which stands for the manufacturing date of the tire. The first two digits stand for the week; the other two for the year. For example, if your tire has "1616" listed, it was manufactured in the 16th week of 2016.

12 **4SEASONS** BL4S

14 **CILERRO** BH15

18 **CILERRO** C168

20 **CHAMPOINT** BU64

22 **CHAMPOINT** BU66

26 **VORACIO** BC86

28 **VORACIO** BA80

30 **VORACIO** BA80+

32 **VORACIO** M871

34 **VORACIO** S806

36 **VORACIO** BS87

38 **VORACIO** BS88

40 **VORACIO** L301

42 **VORACIO** STR

44 **VORACIO** VAN

46 **VORACIO** CUV

48 **WINTER TAMER** BW56

50 **WINTER TAMER** W506

52 **WINTER TAMER** W507

54 **WINTER TAMER** W517

56 **WINTER TAMER** VAN

58 **CHAMPOINT** VR1 RACING



**SUMMER
SERIES**

Passenger tires



CHAMPOINT
VR1 RACING

Performance



CHAMPOINT
BU64



CHAMPOINT
BU66

SPORT

CILERRO
C168



CILERRO
BH15

COMFORT

Economy

SUMMER SERIES

SUV 4x4 and VAN tires

Performance

WINTER SERIES

Winter tires

Performance

VORACIO
BA80+

VORACIO
BA80

VORACIO
M871

VORACIO
BC86

VORACIO
S806

WINTER TAMER
W517

WINTER TAMER
W506

WINTER TAMER
W507

WINTER TAMER
BW56

Off-Road

VORACIO
BS87

On-Road

VORACIO
L301

Off-Road

On-Road

VORACIO
BS88

VORACIO
STR

PRO HAUL ST
ST02

Economy

Economy

BL4S 4SEASONS



Specialty designed all season tire for Europe.



Noise Emissions

Tread pitch arrangement is varied to effectively reduce noise for a quiet driving experience.



Inner Tread Elements

Provides improved handling in snow and water. The tread is equipped with an all new sipe design to greatly enhance grip and shorten braking distance.
Outer Tread Elements: Better handling performance and excellent stability on dry roads.



Four Season Design

Asymmetric tread design employs three main grooves to greatly improve tire handling performance and stability. Deep grooves provide strong grip for all seasonal weather.

Rim	Size	LI/SS		T.D.	Standard Rim	S.W.	O.D.	Max. Load	Max. Pressure	U.T.Q.G.	Sidewall
				mm	inch	mm	mm	kg	kPa		
13	155/70R13	75T		8	4.50B	157	548	387	300	300/A/A	BSW
	155/80R13	79T		8	4.50B	157	578	437	300	300/A/A	BSW
14	165/60R14	79H	XL	8	5J	170	554	437	340	300/A/A	BSW
	185/60R14	82T		8.5	5 1/2J	189	578	475	300	300/A/A	BSW
	155/65R14	75T		8	4 1/2J	157	558	387	300	300/A/A	BSW
	165/65R14	79T		8	5J	170	570	437	300	300/A/A	BSW
	175/65R14	82T		8.5	5J	177	584	475	300	300/A/A	BSW
	185/65R14	86T		8.5	5 1/2J	189	596	530	300	300/A/A	BSW
	165/70R14	85T	XL	8	5J	170	588	515	340	300/A/A	BSW
	175/70R14	84T		8.5	5J	177	602	500	300	300/A/A	BSW
15	175/70R14	88T	XL	8.5	5J	177	602	560	340	300/A/A	BSW
	195/50R15	82H		8.5	6J	201	577	475	300	300/A/A	BSW
	185/55R15	82H		8.5	6J	194	585	475	300	300/A/A	BSW
	195/55R15	85H		8.5	6J	201	595	515	300	300/A/A	BSW
	185/60R15	88H	XL	8.5	5 1/2J	189	603	560	340	300/A/A	BSW
	195/60R15	88H		8.5	6J	201	615	560	300	300/A/A	BSW
	175/65R15	84H		8.5	5J	177	609	500	300	300/A/A	BSW
	185/65R15	88H		8.5	5 1/2J	189	621	560	300	300/A/A	BSW
16	185/65R15	92T	XL	8.5	5 1/2J	189	621	630	340	300/A/A	BSW
	195/65R15	91H		8.5	6J	201	635	615	300	300/A/A	BSW
	205/45R16	87V	XL	8.5	7J	206	590	545	340	300/A/A	BSW
	195/55R16	87V		8.5	6J	201	620	545	300	300/A/A	BSW
	205/55R16	94V	XL	8.5	6 1/2J	214	632	670	340	300/A/A	BSW
	205/55R16	94H	XL	8.5	6 1/2J	214	632	670	340	300/A/A	BSW
	215/55R16	97V	XL	8.5	7J	226	642	730	340	300/A/A	BSW
	225/55R16	99V	XL	8.5	7J	233	654	775	340	300/A/A	BSW
17	205/60R16	96V	XL	8.5	6J	209	652	710	340	300/A/A	BSW
	215/60R16	99V	XL	8.5	6 1/2J	221	664	775	340	300/A/A	BSW
	225/45R17	94V	XL	8.5	7 1/2J	225	634	670	340	300/A/A	BSW
	205/50R17	93V	XL	8.5	6 1/2J	214	638	650	340	300/A/A	BSW
	225/50R17	98V	XL	8.5	7J	233	658	750	340	300/A/A	BSW

XL: Extra Load LI: Load Index SS: Speed Symbol UTQG: Uniform Tire Quality Grade BSW: Black Sidewall



BH15 CILERRO



Excellent handling, superior comfort, high-speed stability and low running noise provide a great driving experience.

The tread is composed of a silicon compound formulation that not only effectively reduces rolling resistance, saves energy and protects the environment with low carbon emissions, but also has good grip to provide greater handling security.



Special Tread

The tread is composed of a silicon compound formulation which lowers rolling resistance for better fuel economy. Tread pattern is designed for great handling for a safer and more comfortable driving experience.



Noise Emission

The tread block pitch order and shoulder grooves effectively reduce running noise and ensure excellent performance.

Safety

The four main grooves and central rib are designed to provide excellent water drainage to improve driving performance for both wet and dry roads.



Rim	Size	LI/SS		T.D.	Standard Rim	S.W.	O.D.	Max. Load	Max. Pressure	U.T.Q.G.	Sidewall
				mm	inch	mm	mm	kg	kPa		
13	175/60R13	77T		8	5.00B	177	540	412	300	420/A/A	BSW
	185/60R13	80T		8	5.50B	189	552	450	300	420/A/A	BSW
	165/65R13	77T		7.6	5.00B	170	544	412	300	420/A/A	BSW
	165/70R13	83T	XL	7.5	5.00B	170	562	487	340	420/A/A	BSW
	175/70R13	82T		8	5.00B	177	576	475	300	420/A/A	BSW
	175/70R13	86T	XL	8	5.00B	177	576	530	340	420/A/A	WR
	185/70R13	86T		7.8	5.50B	189	590	530	300	420/A/B	BSW
14	165/60R14	75H		8	5J	170	554	387	300	420/A/A	BSW
	175/60R14	79H		8	5J	177	566	437	300	420/A/A	BSW
	185/60R14	82H		8	5 1/2J	189	578	475	300	420/A/A	BSW
	195/60R14	86H		8	6J	201	590	530	300	420/A/A	BSW
	205/60R14	88T		8	6J	209	602	560	300	420/A/A	BSW
	175/65R14	86T	XL	8	5J	177	584	530	340	420/A/A	BSW
	175/65R14	82T		8	5J	177	584	475	300	420/A/A	BSW
	185/65R14	86H		8	5 1/2J	189	596	530	300	420/A/A	BSW
	185/65R14	86T		8	5 1/2J	189	596	530	300	420/A/A	BSW
	195/65R14	89H		8	6J	201	610	580	300	420/A/A	BSW
	165/70R14	85T	XL	8	5J	170	588	515	340	420/A/A	BSW
	175/70R14	88T	XL	8	5J	177	602	560	340	420/A/A	BSW
	175/70R14	84T		8	5J	177	602	500	300	420/A/A	BSW
	185/70R14	88H		8	5 1/2J	189	616	560	300	420/A/A	BSW
195/70R14	91T		8	6J	201	630	615	300	420/A/A	BSW	
205/70R14	98T	XL	8	6J	209	644	750	340	420/A/A	BSW	
205/70R14	95T		8	6J	209	644	690	300	420/A/A	BSW	

XL: Extra Load LI: Load Index SS: Speed Symbol UTQG: Uniform Tire Quality Grade BSW: Black Sidewall

BH15 CILERRO



Rim	Size	LI/SS		T.D.	Standard Rim	S.W.	O.D.	Max. Load	Max. Pressure	U.T.Q.G.	Sidewall
				mm	inch	mm	mm	kg	kPa		
15	195/50R15	82V		8	6J	201	577	475	300	420/A/A	BSW
	185/55R15	82V		8	6J	194	585	475	300	420/A/A	BSW
	195/55R15	85V		8	6J	201	595	515	300	420/A/A	BSW
	185/60R15	88H	XL	8	5 1/2J	189	603	560	340	420/A/A	BSW
	185/60R15	84H		8	5 1/2J	189	603	500	300	420/A/A	BSW
	195/60R15	88V		8	6J	201	615	560	300	420/A/A	BSW
	195/60R15	88H		8	6J	201	615	560	300	420/A/A	BSW
	205/60R15	95H	XL	8	6J	209	627	690	340	420/A/A	BSW
	205/60R15	91H		8	6J	209	627	615	300	420/A/A	BSW
	215/60R15	94H		8	6 1/2J	221	639	670	300	420/A/A	BSW
	225/60R15	96V		8	6 1/2J	228	651	710	300	420/A/A	BSW
	175/65R15	84H		8	5J	177	609	500	300	420/A/A	BSW
	185/65R15	92H	XL	8	5 1/2J	189	621	630	340	420/A/A	BSW
	185/65R15	88H		8	5 1/2J	189	621	560	300	420/A/A	BSW
	195/65R15	91V		8	6J	201	635	615	300	420/A/A	BSW
	195/65R15	95T	XL	8	6J	201	635	690	340	420/A/A	BSW
	195/65R15	91H		8	6J	201	635	615	300	420/A/A	BSW
	205/65R15	94V		8	6J	209	647	670	300	420/A/A	BSW
	205/65R15	94H		8	6J	209	647	670	300	420/A/A	BSW
	215/65R15	96V		8.8	6 1/2J	221	661	710	300	420/A/A	BSW
215/65R15	96H		8.8	6 1/2J	221	661	710	300	420/A/A	BSW	
205/70R15	96S		8	6J	209	669	710	300	420/A/B	BSW	
205/70R15	96T		8	6J	209	669	710	300	420/A/B	BSW	
215/70R15	98H		8.8	6 1/2J	221	683	750	300	420/A/A	BSW	
215/70R15	98T		8.8	6 1/2J	221	683	750	300	420/A/A	BSW	
16	195/50R16	88V	XL	8	6J	201	602	560	340	420/A/A	BSW
	205/50R16	87V		8	6 1/2J	214	612	545	300	420/A/A	BSW
	205/50R16	87H		8	6 1/2J	214	612	545	300	420/A/A	BSW
	225/50R16	92V		8	7J	233	632	630	300	420/A/A	BSW
	205/55R16	91V		8	6 1/2J	214	632	615	300	420/A/A	BSW
	205/55R16	94V	XL	8	6 1/2J	214	632	670	340	420/A/A	BSW

Rim	Size	LI/SS		T.D.	Standard Rim	S.W.	O.D.	Max. Load	Max. Pressure	U.T.Q.G.	Sidewall
				mm	inch	mm	mm	kg	kPa		
16	205/55R16	91H		8	6 1/2J	214	632	615	300	420/A/A	BSW
	215/55R16	97H	XL	8	7J	226	642	730	340	420/A/A	BSW
	195/60R16	89V		8.4	6J	201	640	580	300	420/A/A	BSW
	205/60R16	92V		8	6J	209	652	630	300	420/A/A	BSW
	205/60R16	92H		8	6J	209	652	630	300	420/A/A	BSW
	205/60R16	96V	XL	8	6J	209	652	710	340	420/A/A	BSW
	215/60R16	95V		8	6 1/2J	221	664	690	300	420/A/A	BSW
	215/60R16	95H		8	6 1/2J	221	664	690	300	420/A/A	BSW
	225/60R16	98H		8	6 1/2J	228	676	750	300	420/A/A	BSW
	205/65R16	95H		8	6J	209	672	690	300	420/A/A	BSW
	215/65R16	98T		8	6 1/2J	221	686	750	300	420/A/A	BSW
	235/65R16	103H		8	7J	240	712	875	300	420/A/B	BSW
	215/45R17	91W	XL	8	7J	213	626	615	340	420/A/A	BSW
	225/45R17	94W	XL	8	7 1/2J	225	634	670	340	420/A/A	BSW
	235/45R17	97W	XL	8	8J	236	644	730	340	420/A/A	BSW
	17	205/50R17	89V		8	6 1/2J	214	638	580	300	420/A/A
215/50R17		91V		8	7J	226	648	615	300	420/A/A	BSW
225/50R17		94V		8	7J	233	658	670	300	420/A/A	BSW
215/55R17		94V		8	7J	226	668	670	300	420/A/A	BSW
225/55R17		97W		8	7J	233	680	730	300	420/A/A	BSW
225/55R17		97V		8	7J	233	680	730	300	420/A/A	BSW
215/60R17		96T		8	6 1/2J	221	690	710	300	420/A/A	BSW
225/60R17		99H		8	6 1/2J	228	702	775	300	420/A/A	BSW
235/60R17		102T		8	7J	240	714	850	300	420/A/A	BSW
215/65R17		99T		8	6 1/2J	221	712	775	300	420/A/B	BSW
235/40R18		95W	XL	8	8 1/2J	241	645	690	340	420/A/A	BSW
235/40R18		91W		8	8 1/2J	241	645	615	300	420/A/A	BSW
18	235/55R18	100V		8	7 1/2J	245	715	800	300	420/A/A	BSW
	235/60R18	103H		8	7J	240	739	875	300	420/A/A	BSW
	235/60R18	107V	XL	8	7J	240	739	975	340	420/A/A	BSW

XL: Extra Load LI: Load Index SS: Speed Symbol UTQG: Uniform Tire Quality Grade BSW: Black Sidewall WR: White Ring



C168 CILERRO



With a long service life and low rolling resistance C168 is the perfect product for taxis and urban households.



Comfort

A variable pitch design effectively reduces noise generated while driving to provide a quiet and comfortable ride.



Fuel Economy

The silicon tread formulation and reinforced shoulder design effectively reduce rolling resistance for improved fuel economy.



Long Tread Life

A wide tread surface, deepened grooves, and scratch resistant shoulder improve abrasion resistant for a longer tread life.



Water Drainage

The wide main grooves effectively drain water for a safe ride on wet roads.

Rim	Size	LI/SS		T.D.	Standard Rim	S.W.	O.D.	Max. Load	Max. Pressure	U.T.Q.G.	Sidewall
				mm	inch	mm	mm	kg	kPa		
12	165/70R12	77T		9	5.00B	170	537	412	300	620/A/A	RWL
13	165/70R13LT	94/92S		7.5	5.00B	170	562	670/630	450	500/A/A	BSW
14	185/65R14	86H		9	5 1/2J	189	596	530	300	500/A/A	BSW
15	185/65R15	88H		9	5 1/2J	189	621	560	300	500/A/A	BSW
	195/65R15	95H	XL	9	6J	201	635	690	340	500/A/A	BSW
16	205/55R16	94V	XL	9	6 1/2J	214	632	670	340	500/A/A	BSW

XL: Extra Load LI: Load Index SS: Speed Symbol UTQG: Uniform Tire Quality Grade BSW: Black Sidewall RWL: Raised White Letter



BU64 CHAMPOINT



The CHAMPOINT BU64 is an ultra-high performance all-season tire, designed for performance under all weather conditions. Engineered for high-speed performance, cornering, and braking, the BU64 lets you get more out of your car.



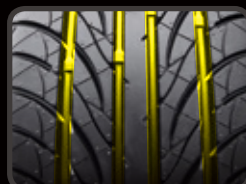
Tapered Tread Edges

Promotes uniform contact pressure for improved stability.



Tread Block Design

The tread blocks are grooved to reinforce block stiffness, promote even load distribution, and improve handling and tread wear. Also reduce resonance for a more comfortable and quiet ride.



Groove Design

Aggressive high angle grooves enhance water drainage to improve wet handling and hydroplaning resistance.

Rim	Size	LI/SS	T.D.	Standard Rim	S.W.	O.D.	Max. Load	Max. Pressure	U.T.Q.G.	Sidewall	
				inch	mm	mm	kg	kPa			
16	205/50ZR16	87W	8.2	6 1/2J	214	612	545	300	480/AA/A	BSW	
	225/50ZR16	92W	8.2	7J	233	632	630	300	480/AA/A	BSW	
	205/55ZR16	91W		8.3	6 1/2J	214	632	615	300	480/AA/A	BSW
	215/55ZR16	97W	XL	8.2	7J	226	642	730	340	480/AA/A	BSW
	225/55ZR16	99W	XL	8.2	7J	233	654	775	340	480/AA/A	BSW
17	205/40ZR17	84W	XL	8.2	7 1/2J	212	596	500	340	480/AA/A	BSW
	245/40ZR17	95W	XL	8.2	8 1/2J	248	628	690	340	480/AA/A	BSW
	205/45ZR17	84W		8.2	7J	206	616	500	300	480/AA/A	BSW
	215/45ZR17	91W	XL	8	7J	213	626	615	340	480/AA/A	BSW
	225/45ZR17	94W	XL	8.2	7 1/2J	225	634	670	340	480/AA/A	BSW
	235/45ZR17	97W	XL	8.2	8J	236	644	730	340	480/AA/A	BSW
	245/45ZR17	99W	XL	8.2	8J	243	652	775	340	480/AA/A	BSW
	205/50ZR17	93W	XL	8.2	6 1/2J	214	638	650	340	480/AA/A	BSW
	215/50ZR17	95W	XL	8.2	7J	226	648	690	340	480/AA/A	BSW
	225/50ZR17	98W	XL	8.2	7J	233	658	750	340	480/AA/A	BSW
18	215/55ZR17	98W	XL	8.2	7J	226	668	750	340	480/AA/A	BSW
	225/55ZR17	101W	XL	8.2	7J	233	680	825	340	480/AA/A	BSW
	235/55ZR17	99W		8.2	7 1/2J	245	690	775	300	480/AA/A	BSW
	215/35ZR18	84W	XL	8	7 1/2J	218	607	500	340	480/AA/A	BSW
	225/40ZR18	92W	XL	8.2	8J	230	637	630	340	480/AA/A	BSW
	235/40ZR18	95W	XL	8.2	8 1/2J	241	645	690	340	480/AA/A	BSW
	245/40ZR18	97W	XL	8.2	8 1/2J	248	653	730	340	480/AA/A	BSW
	225/45ZR18	95W	XL	8.2	7 1/2J	225	659	690	340	480/AA/A	BSW
19	245/45ZR18	100W	XL	8.2	8J	243	677	800	340	480/AA/A	BSW
	255/45ZR18	103W	XL	8.2	8 1/2J	255	687	875	340	480/AA/A	BSW
	235/50ZR18	101W	XL	8.2	7 1/2J	245	693	825	340	480/AA/A	BSW
	245/40ZR19	98W	XL	8.2	8 1/2J	248	679	750	340	480/AA/A	BSW
20	245/45ZR19	98W		8.2	8J	243	703	750	300	480/AA/A	BSW
	245/35ZR20	95W	XL	8.2	8 1/2J	248	680	690	340	480/AA/A	BSW
	255/35ZR20	97W	XL	8.2	9J	260	686	730	340	480/AA/A	BSW
	275/40ZR20	106W	XL	8.2	9 1/2J	278	728	950	340	480/AA/A	BSW
	245/45ZR20	103W	XL	8.2	8J	243	728	875	340	480/AA/A	BSW

XL: Extra Load LI: Load Index SS: Speed Symbol UTQG: Uniform Tire Quality Grade BSW: Black Sidewall



BU66 CHAMPOINT



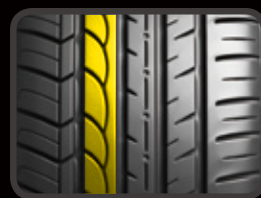
ECONOMICAL HANDLING SILENCE RIM PROTECTION ANTI-SKID

BU66's tread formulation is specially designed to ensure excellent rolling resistance as well as a stronger apex to prevent and damage to the bead.



Wet Performance

Four main grooves drain water excellently for a safer ride in wet weather conditions.



All-Season Performance

The inner tread elements provide stronger grip on both wet and dry roads.



Shoulder Design

The external shoulder blocks provide ideal rigidity and excellent handling.

Rim	Size	LI/SS		T.D.	Standard Rim	S.W.	O.D.	Max. Load	Max. Pressure	U.T.Q.G.	Sidewall
				mm	inch	mm	mm	kg	kPa		
16	205/45ZR16	87W	XL	8.2	7J	206	590	545	340	300/AA/A	BSW
	205/50ZR16	87W		8.2	6 1/2J	214	612	545	300	300/AA/A	BSW
	195/55R16	91V	XL	8	6J	201	620	615	340	300/AA/A	BSW
	195/55RF16	91V	XL	8	6J	201	620	615	340	300/A/A	BSW
	205/55ZR16	94W	XL	8.2	6 1/2J	214	632	670	340	300/AA/A	BSW
	205/55ZRF16	94W	XL	8.2	6 1/2J	214	632	670	340	300/AA/A	BSW
	215/55ZR16	97W	XL	8.2	7J	226	642	730	340	300/AA/A	BSW
	225/55ZR16	99W	XL	8.2	7J	233	654	775	340	300/AA/A	BSW
	225/55ZRF16	99W	XL	8.2	7J	233	654	775	340	300/A/A	BSW
	205/60R16	92V		8.2	6J	209	652	630	300	300/AA/A	BSW
	225/60R16	98V		8.2	6 1/2J	228	676	750	300	300/AA/A	BSW
	235/60R16	100V		8.2	7J	240	688	800	300	300/AA/A	BSW
	205/65R16	95V		8.2	6J	209	672	690	300	300/AA/A	BSW
	17	205/40ZR17	84W	XL	8.2	7 1/2J	212	596	500	340	300/AA/A
215/40ZR17		87W	XL	8.2	7 1/2J	218	604	545	340	300/AA/A	BSW
245/40ZR17		95W	XL	8.2	8 1/2J	248	628	690	340	300/AA/A	BSW
205/45ZR17		88W	XL	8	7J	206	616	560	340	300/AA/A	BSW
215/45ZR17		91W	XL	8.2	7J	213	626	615	340	300/AA/A	BSW
225/45ZR17		94W	XL	8.2	7 1/2J	225	634	670	340	300/AA/A	BSW
225/45ZRF17		94W	XL	8.2	7 1/2J	225	634	670	340	300/AA/A	BSW
235/45ZR17		97W	XL	8.2	8J	236	644	730	340	300/AA/A	BSW
245/45ZR17		99W	XL	8	8J	243	652	775	340	300/AA/A	BSW
205/50ZR17		93W	XL	8	6 1/2J	214	638	650	340	400/AA/A	BSW
205/50ZRF17		93W	XL	8	6 1/2J	214	638	650	340	400/A/A	BSW
215/50ZR17		95W	XL	8.2	7J	226	648	690	340	300/AA/A	BSW
225/50ZR17		98W	XL	8.2	7J	233	658	750	340	300/AA/A	BSW
225/50ZRF17		98W	XL	8.2	7J	233	658	750	340	300/A/A	BSW
235/50ZR17	100W	XL	8	7 1/2J	245	668	800	340	300/AA/A	BSW	
215/55ZR17	94W		8.2	7J	226	668	670	300	300/AA/A	BSW	
225/55ZR17	101W	XL	8.2	7J	233	680	825	340	300/AA/A	BSW	
225/55ZRF17	101W	XL	8.2	7J	233	680	825	340	300/AA/A	BSW	
235/55ZR17	103W	XL	8	7 1/2J	245	690	875	340	300/AA/A	BSW	

XL: Extra Load LI: Load Index SS: Speed Symbol UTQG: Uniform Tire Quality Grade BSW: Black Sidewall



BU66 CHAMPOINT

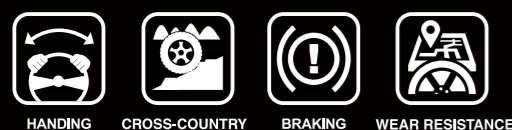
Rim	Size	LI/SS		T.D.	Standard Rim	S.W.	O.D.	Max. Load	Max. Pressure	U.T.Q.G.	Sidewall
				mm	inch	mm	mm	kg	kPa		
18	215/35ZR18	84Y	XL	8	7 1/2J	218	607	500	340	300/AA/A	BSW
	255/35ZR18	94Y	XL	8	9J	260	635	670	340	300/AA/A	BSW
	205/40ZR18	82W		8.2	7 1/2J	212	621	475	300	300/AA/A	BSW
	225/40ZR18	92W	XL	8.2	8J	230	637	630	340	300/AA/A	BSW
	225/40ZRF18	92W	XL	8.2	8J	230	637	630	340	300/A/A	BSW
	235/40ZR18	95W	XL	8.2	8 1/2J	241	645	690	340	300/AA/A	BSW
	245/40ZR18	97Y	XL	8.2	8 1/2J	248	653	730	340	300/AA/A	BSW
	245/40ZRF18	97W	XL	8.2	8 1/2J	248	653	730	340	300/A/A	BSW
	225/45ZR18	95Y	XL	8	7 1/2J	225	659	690	340	300/AA/A	BSW
	225/45ZRF18	95W	XL	8	7 1/2J	225	659	690	340	300/A/A	BSW
	235/45ZR18	98Y	XL	8	8J	236	669	750	340	300/AA/A	BSW
	245/45ZR18	100W	XL	8.2	8J	243	677	800	340	300/AA/A	BSW
	245/45ZRF18	100W	XL	8.2	8J	243	677	800	340	300/A/A	BSW
	235/50ZR18	101W	XL	8	7 1/2J	245	693	825	340	300/AA/A	BSW
	245/50ZRF18	100Y		8.2	7 1/2J	253	703	800	300	300/A/A	BSW
	19	265/30ZR19	93Y	XL	8	9 1/2J	271	643	650	340	300/AA/A
275/30ZR19		96Y	XL	8	9 1/2J	278	649	710	340	300/AA/A	BSW
225/35ZR19		88Y	XL	8	8J	230	641	560	340	300/AA/A	BSW
235/35ZR19		91Y	XL	8	8 1/2J	241	647	615	340	300/AA/A	BSW
245/35ZR19		93Y	XL	8	8 1/2J	248	655	650	340	300/AA/A	BSW
255/35ZR19		96Y	XL	8	9J	260	661	710	340	300/AA/A	BSW
275/35ZR19		100Y	XL	8	9 1/2J	278	675	800	340	300/AA/A	BSW
225/40ZR19		93Y	XL	8	8J	230	663	650	340	300/AA/A	BSW
245/40ZR19		98Y	XL	8	8 1/2J	248	679	750	340	300/AA/A	BSW
235/45ZR19		99W	XL	8	8J	236	695	775	340	300/AA/A	BSW
235/45ZRF19		99W	XL	8	8J	236	695	775	340	300/A/A	BSW
245/45ZR19		102Y	XL	8	8J	243	703	850	340	300/AA/A	BSW
245/45ZRF19		102W	XL	8	8J	243	703	850	340	300/A/A	BSW
275/45ZR19		108Y	XL	8	9J	273	731	1000	340	300/AA/A	BSW
285/45ZR19		111Y	XL	8	9 1/2J	285	739	1090	340	300/AA/A	BSW
255/50ZR19	107Y	XL	8	8J	265	739	975	340	300/AA/A	BSW	
255/50RF19	103V		8	8J	265	739	875	300	300/A/A	BSW	

Rim	Size	LI/SS		T.D.	Standard Rim	S.W.	O.D.	Max. Load	Max. Pressure	U.T.Q.G.	Sidewall
				mm	inch	mm	mm	kg	kPa		
20	245/30ZR20	90Y	XL	8	8 1/2J	248	656	600	340	300/AA/A	BSW
	245/30ZR20	95Y	XL	8	8 1/2J	248	656	690	340	300/AA/A	BSW
	275/30ZR20	97Y	XL	8	9 1/2J	278	674	730	340	300/AA/A	BSW
	225/35ZR20	90Y	XL	8	8J	230	666	600	340	300/AA/A	BSW
	225/35ZR20	93Y	XL	8	8J	230	666	650	340	300/AA/A	BSW
	245/35ZR20	95Y	XL	8	8 1/2J	248	680	690	340	300/AA/A	BSW
	275/40ZR20	106Y	XL	8	9 1/2J	278	728	950	340	300/AA/A	BSW
	245/45ZR20	103Y	XL	8	8J	243	728	875	340	300/AA/A	BSW
	255/45ZR20	105Y	XL	8	8 1/2J	255	738	925	340	300/AA/A	BSW
	275/45ZR20	110Y	XL	8	9J	273	756	1060	340	300/AA/A	BSW
21	325/30ZR21	108Y	XL	8	11 1/2J	331	729	1000	340	300/AA/A	BSW
	285/35ZR21	105Y	XL	8	10J	290	733	925	340	300/AA/A	BSW
	295/35ZR21	107Y	XL	8	10 1/2J	301	739	975	340	300/AA/A	BSW

XL: Extra Load LI: Load Index SS: Speed Symbol UTQG: Uniform Tire Quality Grade BSW: Black Sidewall



BC86 VORACIO



HANDING CROSS-COUNTRY BRAKING WEAR RESISTANCE

High performance SUV and light truck tire with excellent durability and handling efficiency.



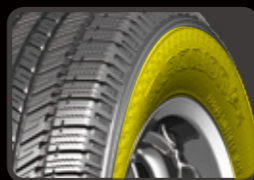
Tread Formula

Special tread formula improves abrasion resistance and grip for better handling.



Safety

Wide tread grooves and small cut block grooves ensure a safe ride by effectively draining water for better traction.



Sidewall Design

The sidewall structure and ladder-like grooves on the shoulder allow the tire to conquer any challenge on both paved and non-paved roads.

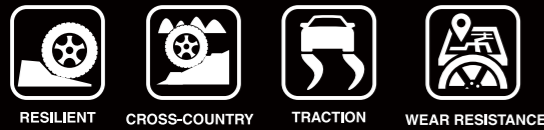
Rim	Size	LI/SS	T.D.	Standard Rim	S.W.	O.D.	Max. Load	Max. Pressure	U.T.Q.G.	Sidewall
			mm	inch	mm	mm				
15	205/70R15	96S	9.8	6J	209	669	710	300	700/A/B	BSW
	225/70R15	100S	9	6 1/2J	228	697	800	300	700/A/B	BSW
	215/75R15	100T	8.8	6J	216	703	800	300	700/A/B	BSW
	235/75R15	105S	9.8	6 1/2J	235	733	925	300	700/A/B	BSW
16	215/65R16	98T	9.8	6 1/2J	221	686	750	300	700/A/B	BSW
	215/70R16	100H	9	6 1/2J	221	708	800	300	700/A/B	BSW
	215/70R16	100T	9	6 1/2J	221	708	800	300	700/A/B	BSW
	225/70R16	103S	9.8	6 1/2J	228	722	875	300	700/A/B	BSW

Rim	Size	LI/SS	T.D.	Standard Rim	S.W.	O.D.	Max. Load	Max. Pressure	U.T.Q.G.	Sidewall	
			mm	inch	mm	mm					
16	235/70R16	106T	8.8	7J	240	736	950	300	700/A/B	BSW	
	245/70R16	107S	9.8	7J	248	750	975	300	700/A/B	BSW	
	255/70R16	111T	8.8	7 1/2J	260	764	1090	300	700/A/B	BSW	
	265/70R16	112T	8.8	8J	272	778	1120	300	700/A/B	BSW	
	LT225/75R16	115/112S	10.5	6J	223	744	1215/1120	550		BSW	
	LT245/75R16	120/116Q	10.5	7J	248	774	1400/1250	550		BSW	
	LT265/75R16	123/120Q	10.5	7 1/2J	267	804	1550/1400	550		BSW	
	225/75R16	104S	8.8	6J	223	744	900	300	700/A/B	BSW	
	245/75R16	111T	8.8	7J	248	774	1090	300	700/A/B	BSW	
	265/75R16	116T	8.8	7 1/2J	267	804	1250	300	700/A/B	BSW	
	LT235/85R16	120/116S	10.5	6 1/2J	235	806	1400/1250	550		BSW	
	LT215/85R16	115/112S	8.5	6J	216	772	1215	550		BSW	
17	225/60R17	99H	9	6 1/2J	228	702	775	300	700/A/A	BSW	
	225/65R17	102S	9.8	6 1/2J	228	724	850	300	700/A/B	BSW	
	225/65R17	102T	9.8	6 1/2J	228	724	850	300	700/A/B	BSW	
	235/65R17	104S	9.8	7J	240	738	900	300	700/A/B	BSW	
	235/65R17	104T	9.8	7J	240	738	900	300	700/A/B	BSW	
	245/65R17	107T	8.8	7J	248	750	975	300	700/A/B	BSW	
	265/65R17	112T	8.8	8J	272	776	1120	300	700/A/B	BSW	
	265/65R17	112H	8.8	8J	272	776	1120	300	700/A/B	BSW	
	LT245/70R17	119/116R	10.5	7J	248	776	1360/1250	550		BSW	
	LT265/70R17	121/118Q	10.5	8J	272	804	1450/1320	550		BSW	
	245/70R17	110T	8.8	7J	248	776	1060	300	700/A/B	BSW	
	265/70R17	115T	8.8	8J	272	804	1215	300	700/A/B	BSW	
18	LT245/75R17	121/118S	8.5	7J	248	806	1450	550		BSW	
	235/75R17	109S	8.8	6 1/2J	235	784	1030	300	700/A/B	BSW	
	LT235/80R17	120/117R	10.5	6 1/2J	235	808	1400/1285	550		BSW	
	235/55R18	100T	8	7 1/2J	245	715	800	300	700/A/A	BSW	
	245/60R18	105H	8.8	7J	248	751	925	300	700/A/B	BSW	
	265/60R18	110T	8.8	8J	272	775	1060	300	700/A/B	BSW	
20	265/65R18	114H	8.5	8J	272	801	1180	300	700/A/B	BSW	
	275/65R18	116T	8.8	8J	279	815	1250	300	700/A/B	BSW	
	255/70R18	113T	8.8	7 1/2J	260	815	1150	300	700/A/B	BSW	
	275/45R20	110H	XL	8	9J	273	756	1060	340	700/A/A	BSW
	275/55R20	113H	8	8 1/2J	284	810	1150	300	700/A/A	BSW	
	275/60R20	115S	8.8	8J	279	838	1215	300	700/A/B	BSW	

XL: Extra Load LI: Load Index SS: Speed Symbol UTQG: Uniform Tire Quality Grade BSW: Black Sidewall



BA80 VORACIO



An all-terrain off-road tire that can be used for various types of pickup trucks and sport utility vehicles. Great operational flexibility - strong off-road performance while also maintaining good on-road handling and driving comfort.



Tread Formula

The tread compound is specially designed to improve grip and handling on wet and dry surfaces, while also improving tread life.



Noise Emission

Unique pattern design enhances driving stability and effectively reduces noise for a greater driving experience.



Sidewall Design

The sidewall is designed to be scratch resistant which helps ensure longer service life. Also comes with novelty white lettering.

Rim	Size	LI/SS		T.D.	Standard Rim	S.W.	O.D.	Max. Load	Max. Pressure	U.T.Q.G.	Sidewall
				mm	inch	mm	mm	kg	kPa		
15	31x10.50R15LT	109S		13	8 1/2J	268	775	1030	350		OWL
	235/75R15	109S	XL	8.8	6 1/2J	235	733	1030	340	700/A/B	OWL
	LT215/75R15	100/97S		12	6J	216	703	800/730	350		OWL
	LT225/75R15	102/99S		12	6J	223	719	850/775	350		OWL
	LT235/75R15	104/101S		12	6 1/2J	235	733	900/825	350		OWL
16	215/70R16	100S		8.8	6 1/2J	221	708	800	300	700/A/B	OWL
	235/70R16	106T		8.8	7J	240	736	950	300	700/A/B	OWL
	235/70R16	106S		8.8	7J	240	736	950	300	700/A/B	OWL
	245/70R16	107S		8.8	7J	248	750	975	300	700/A/B	OWL
	245/70R16	111S	XL	8.8	7J	248	750	1090	340	700/A/B	OWL
	255/70R16	111S		8.8	7 1/2J	260	764	1090	300	700/A/B	OWL
	265/70R16	112T		8.8	8J	272	778	1120	300	700/A/B	OWL
	265/70R16	112S		8.8	8J	272	778	1120	300	700/A/B	OWL
	LT235/70R16	104/101T		12	7J	240	736	900/825	350		OWL
	LT245/70R16	106/103T		12	7J	248	750	950/875	350		OWL
	LT265/70R16	117/114T		13	8J	272	778	1285/1180	450		OWL
	LT265/70R16	117/114S		13	8J	272	778	1285/1180	450		OWL
	LT225/75R16	115/112S		13	6J	223	744	1215/1120	550		OWL
LT245/75R16	120/116Q		13	7J	248	774	1400/1250	550		OWL	
LT265/75R16	123/120Q		13	7 1/2J	267	804	1550/1400	550		OWL	
LT285/75R16	126/123R		10.5	8J	286	834	1700/1550	550		OWL	
LT235/85R16	120/116S		13	6 1/2J	235	806	1400/1250	550		OWL	
17	225/65R17	102T		8.8	6 1/2J	228	724	850	300	700/A/B	OWL
	235/65R17	104T		8.8	7J	240	738	900	300	700/A/B	OWL
	245/65R17	107T		8.8	7J	248	750	975	300	700/A/B	OWL
	245/65R17	107S		8.8	7J	248	750	975	300	700/A/B	OWL
	285/65R17	116T		8.8	8 1/2J	292	802	1250	300	700/A/B	OWL
	285/65R17	116H		8.8	8 1/2J	292	802	1250	300	700/A/B	OWL
	LT265/65R17	120/117R		10.5	8J	272	776	1400/1285	550		OWL
	245/70R17	110S		8.8	7J	248	776	1060	300	700/A/B	OWL
	245/70R17	110H		8.8	7J	248	776	1060	300	700/A/B	OWL
	265/70R17	115T		10.5	8J	272	804	1215	300	700/A/B	OWL
	LT245/70R17	119/116R		10.5	7J	248	776	1360/1250	550		OWL
	LT265/70R17	121/118Q		10.5	8J	272	804	1450/1320	550		OWL
	LT285/70R17	121/118S		10.5	8 1/2J	292	832	1450/1320	450		OWL
LT285/70R17	121/118S		10.5	8 1/2J	292	832	1450/1320	550		OWL	
LT245/75R17	121/118S		10.5	7J	248	800	1450/1320	550		OWL	
LT235/80R17	120/117R		10.5	6 1/2J	235	808	1400/1285	550		OWL	
18	245/60R18	105T		8.8	7J	248	751	925	300	700/A/B	OWL
	265/60R18	110T		8.8	8J	272	775	1060	300	700/A/B	OWL
	255/65R18	111S		8.8	7 1/2J	260	789	1090	300	700/A/B	OWL
	275/65R18	116T		8.8	8J	279	815	1250	300	700/A/B	OWL
	LT275/65R18	123/120S		10.5	8J	279	815	1550/1400	550		OWL
20	265/50R20	111T	XL	8.8	8 1/2J	277	774	1090	340	700/A/A	BSW
	265/50R20	111T	XL	8.8	8 1/2J	277	774	1090	340	700/A/A	OWL
	275/55R20	117H	XL	8	8 1/2J	284	810	1285	340	700/A/A	OWL
	275/55R20	117S	XL	8	8 1/2J	284	810	1285	340	700/A/A	OWL
	LT275/65R20	126/123S		10.5	8J	279	866	1700/1550	550		OWL

XL: Extra Load LI: Load Index SS: Speed Symbol UTQG: Uniform Tire Quality Grade OWL: Outlined White Letter



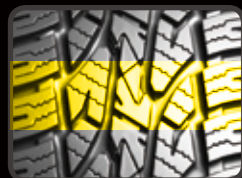
BA80+ VORACIO



An all-terrain off-road tire that can be used for various types of pickup trucks and sport utility vehicles. Great operational flexibility - strong off-road performance while also maintaining good on-road handling and driving comfort. All BA80+ LT sizes are 3PMS certified to ensure for safe driving in extreme winter weather conditions.

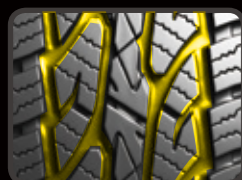


New sipe design elements
greatly improve traction, handling,
and stability for greater
driving safety.



Tread Formula

Special composite materials make up the tire tread to provide improved grip and excellent control on wet and dry surfaces while also increasing the tire's usable life.



Tread Pattern

The unique pattern design enhances driving stability and effectively reduces noise for a greater driving experience.



Sidewall Design

The sidewall is designed to be scratch resistant to ensure a longer service life. Also comes with novelty white lettering.

Rim	Size	LI/SS		T.D.	Standard Rim	S.W.	O.D.	Max. Load	Max. Pressure	U.T.Q.G.	Sidewall
				mm	inch	mm	mm	kg	kPa		
15	31x10.50R15LT	109S		13	8 1/2J	268	775	1030	350		OWL
	235/75R15	109S	XL	10.5	6 1/2J	235	733	1030	340	500/A/B	OWL
	LT235/75R15	110/107S		8.5	6 1/2J	235	733	1060	450		OWL
16	235/70R16	106S		10.5	7J	240	736	950	300	500/A/B	OWL
	265/70R16	112T		10.5	8J	272	778	1120	300	500/A/B	OWL
	245/75R16	111S		10.5	7J	248	774	1090	300	500/A/B	OWL
	265/75R16	116S		10.5	7 1/2J	267	804	1250	300	500/A/B	OWL
	LT225/75R16	115/112S		13	6J	223	744	1215/1120	550		BSW
	LT245/75R16	120/116S		13	7J	248	774	1380/1260	550		BSW
17	LT265/75R16	123/120S		13	7 1/2J	267	804	1550/1400	550		OWL
	LT285/75R16	126/123S		13	8J	286	834	1700/1550	550		OWL
	LT235/85R16	120/116S		13	6 1/2J	235	806	1380/1260	550		BSW
	245/65R17	107S		10.5	7J	248	750	975	300	500/A/B	OWL
	265/65R17	112S		10.5	8J	272	776	1120	300	500/A/B	OWL
	255/70R17	112S		8.5	7 1/2J	260	790	1120	300	500/A/B	OWL
	265/70R17	115S		10.5	8J	272	804	1215	300	500/A/B	OWL
	LT245/70R17	119/116S		13	7J	248	776	1360/1250	550		OWL
	LT265/70R17	121/118S		13	8J	272	804	1450/1320	550		OWL
	LT285/70R17	121/118S		13	8 1/2J	292	832	1450/1320	550		OWL
18	LT245/75R17	121/118S		13	7J	248	800	1450/1320	550		OWL
	LT235/80R17	120/117R		13	6 1/2J	235	808	1400/1285	550		OWL
	275/65R18	116T		10.5	8J	279	815	1250	300	500/A/B	OWL
	LT275/65R18	123/120S		13	8J	279	815	1550/1400	550		OWL
	LT265/70R18	124/121R		13	8J	272	829	1600/1450	550		BSW
20	LT275/70R18	125/122R		13	8J	279	843	1650/1500	550		OWL
	275/55R20	117T	XL	10.5	8 1/2J	284	810	1285	340	500/A/B	BSW
	275/60R20	115T		10.5	8J	279	838	1215	300	500/A/B	BSW
	LT275/65R20	126/123S		13	8J	279	866	1700/1550	550		BSW

XL: Extra Load LI: Load Index SS: Speed Symbol UTQG: Uniform Tire Quality Grade OWL: Outlined White Letter BSW: Black Sidewall



M871 VORACIO



This MT pattern is molded with an increased depth and wide open shoulder design to better expel mud while driving. This improves the effectiveness of the tire's self-cleaning capabilities and grip on uneven, rocky surfaces.



Specially designed tire developed for **cross-country enthusiasts**



Strengthened Carcass
The three ply carcass makes this tire extremely strong and capable of handling strong impacts.



Should Blocks
The large shoulder block design vastly enhances the handling performance on muddy and rocky roads for improved driving quality.



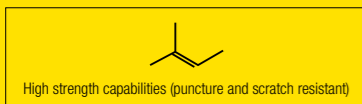
Sidewall Design
The shield-like design extending up from the sidewall improves traction and further protects the sidewall from damage.



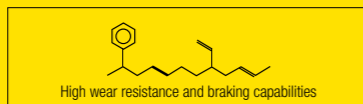
Shoulder Grooves
Open shoulder design with enlarged and deepened grooves allow for easier expulsion of mud whether traveling at low or high speeds. These changes effectively improve the tire's self-cleaning performance and grip capabilities when traveling on rugged and rocky roads.

Rim	Size	LI/SS	T.D.	Standard Rim	S.W.	O.D.	Max. Load	Max. Pressure	U.T.Q.G.	Sidewall
			mm	inch	mm	mm	kg	kPa		
15	30x9.50R15LT	104Q	15.3	7 1/2J	240	756	900	350		OWL
	31x10.50R15LT	109Q	15.3	8 1/2J	268	781	1030	350		OWL
	33x12.50R15LT	108Q	15.3	10J	318	832	1000	250		OWL
	35x12.50R15LT	113Q	15.3	10J	318	883	1150	250		OWL
	LT235/75R15	104/101Q	15.3	6 1/2J	235	739	900/825	350		OWL
16	LT235/85R16	120/116Q	15.3	6 1/2J	235	812	1380/1260	550		OWL
	LT245/75R16	120/116Q	15.3	7J	248	780	1380/1260	550		OWL
	LT265/75R16	123/120Q	15.3	7 1/2J	267	810	1550/1400	550		OWL
17	LT285/70R17	121/118Q	15.5	8 1/2J	292	838	1450/1320	550		OWL
	LT265/70R17	121/118Q	15.5	8J	272	810	1450/1320	550		OWL
	33x12.50R17LT	114Q	16.3	10J	318	832	1180	350		OWL
18	35x12.50R17LT	121Q	16.3	10J	318	883	1450	450		OWL
	33x12.50R18LT	118Q	16.3	10J	318	832	1320	450		BSW
	35x12.50R18LT	123Q	16.7	10J	318	883	1550	450		BSW
	35x12.50R18LT	123K	16.7	10J	318	883	1550	450		BSW
20	LT305/55R20	121/118Q	16.3	9 1/2J	316	850	1450/1320	450		BSW
	35x12.50R20LT	121Q	16.3	10J	318	883	1450	450		BSW
	33x12.50R20LT	114Q	16.3	10J	318	832	1180	450		BSW

XL: Extra Load LI: Load Index SS: Speed Symbol OWL: Outlined White Letter UTQG: Uniform Tire Quality Grade



+



Uses a specialized rubber compound to create a more balanced tire with strong grip.

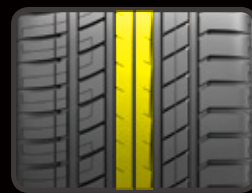
S806 VORACIO



A UHP sports SUV product with an offset lateral arrangement of pattern blocks and fine groove design that effectively reduce noise and improve driving comfort.



The all new
Blacklion S806
offers excellent safety
performance for an all new
driving experience.



Safety

The wide center rib design offers great traction when accelerating and braking for a safe driving experience.



Wet Performance

The greater ratio of grooves provide better drainage capabilities for improved handling and grip in wet weather conditions. The tread compound also provides greater wet grip and reduces the rolling resistance for increased fuel economy.



Block Design

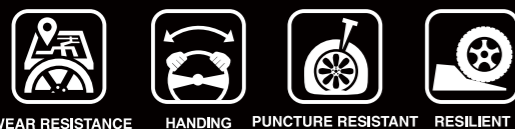
An optimized pitch and sipe pattern arrangement effectively reduces noise for a more comfortable ride.

Rim	Size	LI/SS		T.D.	Standard Rim	S.W.	O.D.	Max. Load	Max. Pressure	U.T.Q.G.	Sidewall
				mm	inch	mm	mm	kg	kPa		
17	255/60R17	106H		8.5	7 1/2J	260	738	950	300	500/A/A	BSW
	235/50R18	97V		8	7 1/2J	245	693	730	300	280/AA/A	BSW
18	235/50RF18	97V		8	7 1/2J	245	693	730	300	280/A/A	BSW
	255/55RF18	105H		8	8J	265	737	925	300	280/A/A	BSW
	225/60R18	100V		8.5	6 1/2J	228	727	800	300	500/A/A	BSW
19	235/50R19	103W	XL	8.5	7 1/2J	245	719	875	340	500/A/A	BSW
	235/55R19	101W		8.5	7 1/2J	245	741	825	300	500/A/A	BSW
22	245/55R19	103V		8	7 1/2J	253	753	875	300	280/AA/A	BSW
	305/40R22	114W	XL	8	11J	313	803	1180	340	280/AA/A	BSW

XL: Extra Load LI: Load Index SS: Speed Symbol UTQG: Uniform Tire Quality Grade BSW: Black Sidewall



BS87 VORACIO



The Voracio BS87 is specially designed to provide excellent performance on wet roads and offers increased load bearing capabilities for light truck vehicles.



Tread Life

The unique tread compounds increase the tire's wear resistance and deep grooves provide a longer service life.



Commerical Utilization

The applied tread compounds and optimized pattern design provide great load bearing capabilities.



Wet Performance

Wide, zigzagged main grooves effectively siphon water for excellent driving performance on wet roads.

Rim	Size	LI/SS	T.D.	Standard Rim	S.W.	O.D.	Max. Load	Max. Pressure	U.T.Q.G.	Sidewall
			mm	inch	mm	mm	kg	kPa		
14	185R14C	102/100Q	10.5	5 1/2J	188	650	850/800	450		BSW
	195R14C	106/104Q	9	5 1/2J	198	666	950/900	450		BSW
	175/70R14C	95/93R	8	5J	177	602	690/650	375		BSW
15	185R15C	103/102R	10.5	5 1/2J	188	674	875/850	450		BSW
	195R15C	106/104R	10.5	5 1/2J	198	690	950/900	450		BSW

XL: Extra Load LI: Load Index SS: Speed Symbol UTQG: Uniform Tire Quality Grade BSW: Black Sidewall



BS88 VORACIO



Flexible handling and longer running tire specifically designed for light trucks.



Bead Strength

The improved bead structure enhances durability.



Carrying Capacity

This specialty tire is designed with a reinforced carcass to improve its load bearing capability.



Wet Performance

The three main grooves improve effectively siphon water to grip on wet roads.



Tread Life

The tread composition and pattern design is optimized to improve wear resistance for a longer service life.

Rim	Size	LI/SS	T.D.	Standard Rim	S.W.	O.D.	Max. Load	Max. Pressure	U.T.Q.G.	Sidewall
			mm	inch	mm	mm	kg	kPa		
15	6.50R15LT	106/101N	10	5.50F	185	730	950/825	560		BSW
16	6.50R16LT	107/102N	10.5	5.50F	185	750	975/850	560		BSW
	7.00R16LT	115/110N	10.5	5.50F	200	775	1215/1060	670		BSW

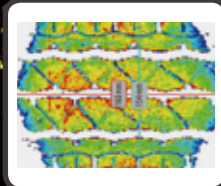
XL: Extra Load LI: Load Index SS: Speed Symbol UTQG: Uniform Tire Quality Grade BSW: Black Sidewall



L301 VORACIO



Specially designed for commercial light trucks, minivans, and minibuses, the Voracio L301 provides outstanding handling on wet surfaces as well as excellent high speed durability.



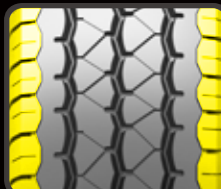
Contour Design

The new tire profile strengthens the carcass for excellent carrying capacity.



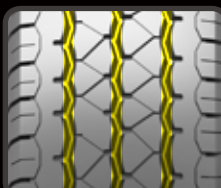
Carcass Strength

Nylon cap strips wound in the belt cover the entire shoulder to improve overall durability and the double layered carcass improves impact resistance of the sidewall. The sturdy bead apex structure improves the tires load bearing capabilities and handling.



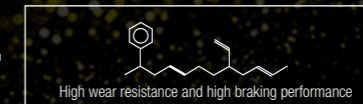
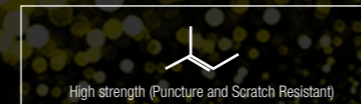
Tread and Shoulder Design

The compact tread design offers great driving comfort, superior load capability and high speed performance in both wet and dry conditions. The combination of big shoulder blocks and small grooves ensure even tire wear while also reducing noise emissions.



Groove and Sipe Design

The sipe design increases overall grip and wear resistance while the high tilt angle grooves reduce stone retention. The knobbed grooves also accelerate heat dispersion for improved durability and effectively siphon water for improved water performance.



Use of specialized rubber compounds achieves a balance of strength and braking performance.

Rim	Size	LI/SS	T.D.	Standard Rim	S.W.	O.D.	Max. Load	Max. Pressure	U.T.Q.G.	Sidewall
12	145R12C	86/84P	8	4.00B	145	537	530/500	450		BSW
	155R12C	88/86P	8	4.50B	157	550	560/530	450		BSW
14	175R14C	99/98Q	9	5J	178	634	775/750	450		BSW
	175/65R14C	90/88T	8	5J	177	584	600/560	375		BSW
	205/75R14C	109/107Q	9	5 1/2J	203	664	1030/975	475		WR
15	215R15C	109/107R	10	6J	218	725	1030/975	450		WR
	195/70R15C	104/102R	10	6J	201	655	900/850	450		BSW
	205/70R15C	106/104R	9	6J	209	669	950/900	450		BSW
	215/70R15C	109/107R	10	6 1/2J	221	683	1030/975	450		BSW
	225/70R15C	112/110R	9	6 1/2J	228	697	1120/1060	450		BSW
16	195/60R16C	99/97T	9	6J	201	640	775/730	375		BSW
	215/60R16C	108/106T	9	6 1/2J	221	664	1000/950	475		BSW
	195/65R16C	104/102R	9.4	6J	201	660	900/850	475		BSW
	205/65R16C	107/105R	9	6J	209	672	975/925	475		BSW
	215/65R16C	109/107R	9	6 1/2J	221	686	1030/975	475		BSW
	225/65R16C	112/110R	9	6 1/2J	228	698	1120/1060	475		BSW
	235/65R16C	115/113R	9	7J	240	712	1215/1150	475		BSW
	185/75R16C	104/102R	9	5J	184	684	900/850	475		BSW
	195/75R16C	107/105R	10	5 1/2J	196	698	975/925	475		BSW
	205/75R16C	110/108R	9	5 1/2J	203	714	1060/1000	475		BSW
215/75R16C	116/114R	10.5	6J	216	728	1250/1180	525		BSW	
225/75R16C	121/120R	9	6J	223	744	1450/1400	575		BSW	

XL: Extra Load LI: Load Index SS: Speed Symbol UTQG: Uniform Tire Quality Grade BSW: Black Sidewall WR: White Ring



STR VORACIO



Special trailer-hauling design with great performance.



Shoulder Design

The unique no-joint shoulder design helps reduce deformation of the belt and reduces heat buildup in the shoulder.



Stone Retention

The zigzag design of the tread grooves reduces stone retention and improves overall driving adaptability on all road conditions.



Tread Life

The groove and sipe design improves tire traction and resistance to heat buildup to effectively extend tire tread life.



Rib Design

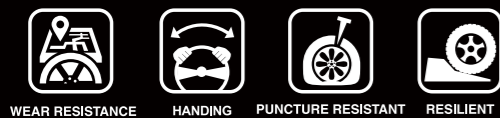
Overall tread rigidity is improved to reduce tire deformation and reduce heat build-up.

Rim	Size	LI/SS	T.D.	Standard Rim	S.W.	O.D.	Max. Load	Max. Pressure	U.T.Q.G.	Sidewall
			mm	inch	mm	mm	kg	kPa		
13	ST175/80R13	91/87L	7.6	5J	177	610	615/545	350		BSW
14	ST205/75R14	100/96L	7.8	5 1/2J	203	664	800/710	350		BSW
	ST215/75R14	102/98L	7.8	6J	216	678	850/750	350		BSW
15	ST205/75R15	107/102L	7.8	5 1/2J	203	689	975/850	450		BSW
	ST225/75R15	117/112L	7.8	6J	223	719	1285/1120	550		BSW
16	ST235/80R16	124/120L	8	6 1/2J	235	782	1600/1400	550		BSW
	ST235/85R16	125/121L	8	6 1/2J	235	806	1650/1450	550		BSW
	ST235/85R16	128/124L	8	6 1/2J	235	806	1800/1600	660		BSW

XL: Extra Load LI: Load Index SS: Speed Symbol UTQG: Uniform Tire Quality Grade BSW: Black Sidewall



VAN VORACIO

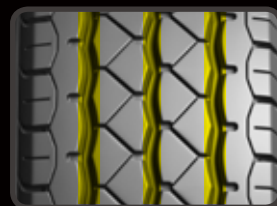


Specially designed pattern for commercial light trucks, minivans, and minibuses that offers outstanding handling on wet surfaces as well as excellent high speed durability.



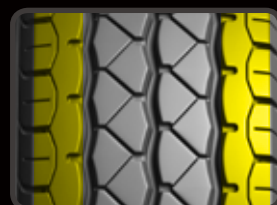
Tread Pattern

Original pattern design ensures excellent performance and greater driving comfort on wet and dry roads.



Tread Design

Wider and deeper grooves increase wear resistance, efficiently drain water, and provide greater handling and stability.



Tire Structure

The reinforced carcass allows for greater load bearing capabilities.

Nylon cap strips wound in the belt cover the entire shoulder for improved durability to resist irregular wear.

Strengthened double carcass design improve the sidewall's impact resistance.

Sturdy bead apex structure and design support the tire load to improve braking.

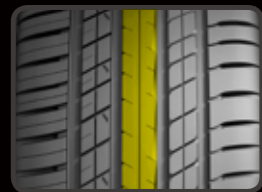
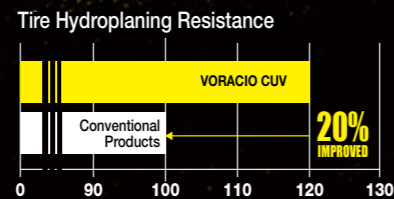
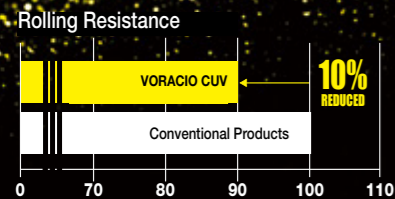
Rim	Size	LI/SS	T.D.	Standard Rim	S.W.	O.D.	Max. Load	Max. Pressure	U.T.Q.G.	Sidewall
			mm	inch	mm	mm	kg	kPa		
12	155R12C	88/86P	8	4.50B	157	550	560/530	450		BSW
	165/70R13C	88/86Q	8	5.00B	170	562	560/530	375		BSW
13	155R13C	85/83Q	8	4.50B	157	578	515/487	350		BSW
	165R13C	94/93S	7.6	4.50B	167	596	670/650	450		BSW
	175R13C	97/95S	8	5.00B	177	610	730/690	450		BSW
14	175/65R14C	90/88T	8	5J	177	584	600/560	375		BSW
	175/70R14C	95/93Q	8	5J	177	602	690/650	375		BSW
	175R14C	99/98Q	9	5J	178	634	775/750	450		BSW
	185R14C	102/100Q	9	5 1/2J	188	650	850/800	450		BSW
	195R14C	106/104Q	9	5 1/2J	198	666	950/900	450		BSW
	205R14C	109/107R	9	6J	208	686	1030/975	450		BSW
15	205/65R15C	102/100R	9	6J	209	647	850/800	375		BSW
	195/70R15C	104/102R	10	6J	201	655	900/850	450		BSW
	205/70R15C	106/104R	9	6J	209	669	950/900	450		BSW
	215/70R15C	109/107S	10	6 1/2J	221	683	1030/975	450		BSW
	225/70R15C	112/110R	9	6 1/2J	228	697	1120/1060	450		BSW
	185R15C	103/102R	9.4	5 1/2J	188	674	875/850	450		BSW
	195R15C	106/104R	9	5 1/2J	198	690	950/900	450		BSW
	195/60R16C	99/97T	9	6J	201	640	775/730	375		BSW
16	215/60R16C	108/106T	9	6 1/2J	221	664	1000/950	475		BSW
	195/65R16C	104/102R	9.4	6J	201	660	900/850	475		BSW
	205/65R16C	107/105R	9	6J	209	672	975/925	475		BSW
	215/65R16C	109/107R	9	6 1/2J	221	686	1030/975	475		BSW
	225/65R16C	112/110R	9	6 1/2J	228	698	1120/1060	475		BSW
	235/65R16C	115/113R	9	7J	240	712	1215/1150	475		BSW
	215/70R16C	108/106Q	9	6 1/2J	221	708	1000/950	375		BSW
	185/75R16C	104/102R	9	5J	184	684	900/850	475		BSW
	195/75R16C	107/105R	10	5 1/2J	196	698	975/925	475		BSW
	205/75R16C	110/108R	9	5 1/2J	203	714	1060/1000	475		BSW
17	215/75R16C	116/114R	10.5	6J	216	728	1250/1180	525		BSW
	225/75R16C	121/120R	9	6J	223	744	1450/1400	575		BSW
	175R16C	101/99R	9	5J	178	684	825/775	450		BSW
	205R16C	110/108R	9	6J	208	736	1060/1000	450		BSW
	225/70R17C	112/110R	9	6 1/2J	228	748	1120/1060	375		BSW



CUV VORACIO



Specially designed UHP SUV tire.



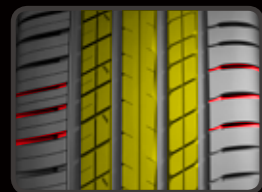
Safety

The center rib design provides greater traction for safer acceleration and braking.



Wear Resistance

The silicon compound tread makes the tire more wear resistance.

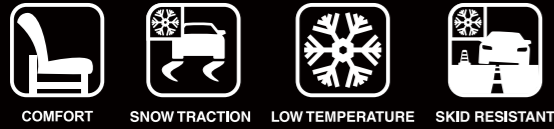


Comfortable Ride

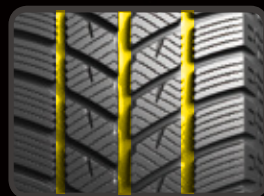
The tread block pitch and built-in sipes reduce tire vibration and noise for a more comfortable ride.

Rim	Size	LI/SS		T.D.	Standard Rim	S.W.	O.D.	Max. Load	Max. Pressure	U.T.Q.G.	Sidewall
				mm	inch	mm	mm	kg	kPa		
17	235/55R17	103W	XL	8	7 1/2J	245	690	875	340	280/AA/A	BSW
	275/40R18	103W	XL	8	9 1/2J	278	677	875	340	280/AA/A	BSW
	235/50R18	97V		8	7 1/2J	245	693	730	300	280/AA/A	BSW
	225/55R18	102W	XL	8	7J	233	705	850	340	280/AA/A	BSW
18	235/55R18	104W	XL	8	7 1/2J	245	715	900	340	280/AA/A	BSW
	255/55R18	109Y	XL	8	8J	265	737	1030	340	280/AA/A	BSW
	225/60R18	100V		8	6 1/2J	228	727	800	300	280/AA/A	BSW
	235/60R18	107W	XL	8	7J	240	739	975	340	280/AA/A	BSW
	245/60R18	105V		8	7J	248	751	925	300	280/AA/B	BSW
	255/60R18	112V	XL	8	7 1/2J	260	763	1120	340	280/AA/B	BSW
	265/60R18	110V		8	8J	272	775	1060	300	280/AA/B	BSW
	265/50R19	110Y	XL	8	8 1/2J	277	749	1060	340	280/AA/A	BSW
19	235/55R19	101W		8	7 1/2J	245	741	825	300	280/AA/A	BSW
	245/55R19	103V		8	7 1/2J	253	753	875	300	280/AA/A	BSW
	255/55R19	111Y	XL	8	8J	265	763	1090	340	280/AA/A	BSW
20	275/35R20	102W	XL	8	9 1/2J	278	700	850	340	280/AA/A	BSW
	295/35R20	105Y	XL	8	10 1/2J	301	714	925	340	280/AA/A	BSW
	255/40R20	101Y	XL	8	9J	260	712	825	340	280/AA/A	BSW
	285/40R20	104Y		8	10J	290	736	900	300	280/AA/A	BSW
	265/50R20	111Y	XL	8	8 1/2J	277	774	1090	340	280/AA/A	BSW
	285/50R20	116W	XL	8	9J	297	794	1250	340	280/AA/A	BSW
	255/55R20	110Y	XL	8	8J	265	788	1060	340	280/AA/A	BSW
	275/55R20	117W	XL	8	8 1/2J	284	810	1285	340	280/AA/A	BSW
275/60R20	119V	XL	8	8J	279	838	1250	340	280/AA/A	BSW	
21	275/45R21	110Y	XL	8	9J	273	781	1060	340	280/AA/A	BSW
22	305/40R22	114W	XL	8	11J	313	803	1180	340	280/AA/A	BSW
	285/45R22	114W	XL	8	9 1/2J	285	815	1180	340	280/AA/A	BSW
	305/45R22	118W	XL	8	10J	303	833	1320	340	280/AA/A	BSW

BW56 WINTER TAMER

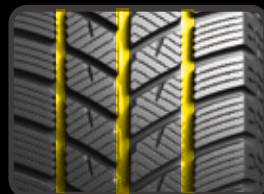


The special tread compound makeup improves traction performance on snow and ice.



Handling

Wide tread and wide tread grooves improve handling in both ice and snow.



Groove Design

The sawtooth design on the edge of the grooves provides greater traction on snow and ice.



Safety

V-shaped design efficiently expels water while the special silicon tread compound maintains tread flexibility and improves wear resistance.

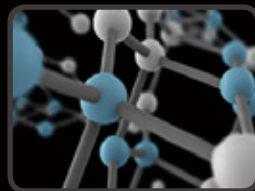
Rim	Size	LI/SS		T.D.	Standard Rim	S.W.	O.D.	Max. Load	Max. Pressure	U.T.Q.G.	Sidewall
				mm	inch	mm	mm	kg	kPa		
13	155/65R13	73T		8.7	4.50B	157	532	365	300		BSW
	155/70R13	75T		8.7	4.50B	157	548	387	300		BSW
	165/70R13	83T	XL	8.7	5.00B	170	562	487	340		BSW
	175/70R13	86T	XL	8.7	5.00B	177	576	530	340		BSW
	155/80R13	79T		8	4.50B	157	578	437	300		BSW
14	185/60R14	82T		8.7	5 1/2J	189	578	475	300		BSW
	195/60R14	86T		8.7	6J	201	590	530	300		BSW
	165/65R14	79T		8.7	5J	170	570	437	300		BSW
	175/65R14	86T	XL	8.7	5J	177	584	530	340		BSW
	185/65R14	86T		8.7	5 1/2J	189	596	530	300		BSW
	165/70R14	85T	XL	8.7	5J	170	588	515	340		BSW
	175/70R14	88T	XL	8.7	5J	177	602	560	340		BSW
	185/70R14	92T	XL	8.7	5 1/2J	189	616	630	340		BSW
	205/70R14	98T	XL	8.7	6J	209	644	750	340		BSW
	185/55R15	86H	XL	8.7	6J	194	585	530	340		BSW
15	195/55R15	89H	XL	9.2	6J	201	595	580	340		BSW
	185/60R15	88H	XL	9.2	5 1/2J	189	603	560	340		BSW
	195/60R15	88T		9.2	6J	201	615	560	300		BSW
	205/60R15	91H		9.2	6J	209	627	615	300		BSW
	175/65R15	88H	XL	8.7	5J	177	609	560	340		BSW
	185/65R15	88T		9.2	5 1/2J	189	621	560	300		BSW
	195/65R15	95T	XL	9.2	6J	201	635	690	340		BSW
	205/65R15	94H		9.2	6J	209	647	670	300		BSW
	205/70R15	96T		9.2	6J	209	669	710	300		BSW
	195/45R16	84H	XL	9.2	6 1/2J	195	582	500	340		BSW
16	195/55R16	87H		9.2	6J	201	620	545	300		BSW
	205/55R16	94H	XL	9.2	6 1/2J	214	632	670	340		BSW
	215/55R16	97H	XL	9.2	7J	226	642	730	340		BSW
	225/55R16	99H	XL	9.2	7J	233	654	775	340		BSW
	205/60R16	92H		9.2	6J	209	652	630	300		BSW
	215/60R16	99H	XL	9.2	6 1/2J	221	664	775	340		BSW
	225/60R16	98H		9.2	6 1/2J	228	676	750	300		BSW
	215/65R16	98H		9.2	6 1/2J	221	686	750	300		BSW
	205/45R17	88H	XL	9.2	7J	206	616	560	340		BSW
	215/45R17	87H		9.2	7J	213	626	545	300		BSW
17	225/45R17	94H	XL	9.2	7 1/2J	225	634	670	340		BSW
	235/45R17	94H		9.2	8J	236	644	670	300		BSW
	245/45R17	99V	XL	8.6	8J	243	652	775	340		BSW
	205/50R17	93V	XL	8.5	6 1/2J	214	638	650	340		BSW
	225/50R17	94H		9.2	7J	233	658	670	300		BSW
	215/55R17	94H		9.2	7J	226	668	670	300		BSW
	225/60R17	103H	XL	8.6	6 1/2J	228	702	875	340		BSW
	225/65R17	102S		9.2	6 1/2J	228	724	850	300		BSW
	225/40R18	92H	XL	9.2	8J	230	637	630	340		BSW
	18	225/45R18	95V	XL	8.6	7 1/2J	225	659	690	340	
235/50R18		101V	XL	8.6	7 1/2J	245	693	825	340		BSW

XL: Extra Load LI: Load Index SS: Speed Symbol BSW: Black Sidewall

W506 WINTER TAMER



The newly developed W506 Winter Tamer employs a special pattern construction and tread compound to enhance driving safety and performance in extreme winter weather conditions.



Tread Compound

The tread utilizes a weather controlled nanoparticle, silica-based compound to provide consistent performance in winter weather conditions.



Stud Arrangement

The tread's CRUSL (Completely Randomized Uniform Studding Layout) provides excellent performance on ice and generates less noise.



Winter Design

The jet-stream directional pattern combined with dense sipes delivers excellent performance in snow, slush, and water.

Rim	Size	LI/SS		T.D.	Standard Rim	S.W.	O.D.	Max. Load	Max. Pressure	U.T.Q.G.	Sidewall
				mm	inch	mm	mm	kg	kPa		
13	175/70R13	82T		9.7	5.00B	177	576	475	300		BSW
	175/65R14	82H		9.7	5J	177	584	475	300		BSW
14	185/65R14	86T		9.7	5 1/2J	189	596	530	300		BSW
	175/70R14	88T	XL	9.7	5J	177	602	560	340		BSW
	185/70R14	92T	XL	9.7	5 1/2J	189	616	630	340		BSW
15	195/60R15	88T		9.7	6J	201	615	560	300		BSW
	185/65R15	88T		9.7	5 1/2J	189	621	560	300		BSW
	195/65R15	91T		9.7	6J	201	635	615	300		BSW
	205/65R15	94H		9.7	6J	209	647	670	300		BSW
	205/70R15	96T		9.7	6J	209	669	710	300		BSW
16	205/55R16	91H		9.7	6 1/2J	214	632	615	300		BSW
	205/60R16	96H	XL	9.7	6J	209	652	710	340		BSW
	215/60R16	99H	XL	9.7	6 1/2J	221	664	775	340		BSW
	215/65R16	98H		9.7	6 1/2J	221	686	750	300		BSW
	215/70R16	100S		9.7	6 1/2J	221	708	800	300		BSW
17	215/50R17	91T		9.7	7J	226	648	615	300		BSW
	215/60R17	96S		9.7	6 1/2J	221	690	710	300		BSW
	225/65R17	102S		9.7	6 1/2J	228	724	850	300		BSW
	235/65R17	104S		9.7	7J	240	738	900	300		BSW
	265/65R17	112S		9.7	8J	272	776	1120	300		BSW

XL: Extra Load LI: Load Index SS: Speed Symbol BSW: Black Sidewall

W507 WINTER TAMER

M+S 



SNOW GRIP SKID RESISTANT SNOW TRACTION LOW TEMPERATURE

A specially designed HP studded winter tire specifically developed for the North American market. All new cold, soft tread formula and new technology design improve grip on ice and wet roads; optimized traction performance to achieve a safe driving experience.



Stud Arrangement

The 12 row stud arrangement increases grip distribution and traction to reduce skidding for an overall safer drive in winter weather conditions.



Winter Handling

The triangular serrated edges on the sides of the groove and large contact area effectively improve grip on ice and snow.



Tread Design

The unique sipe design offers excellent grip on ice while the tread compound maintains softness in extreme cold for greater driving capabilities on ice and snow.

Rim	Size	LI/SS		T.D.	Standard Rim	S.W.	O.D.	Max. Load	Max. Pressure	U.T.Q.G.	Sidewall
				mm	inch	mm	mm	kg	kPa		
15	185/55R15	82T		10	6J	194	585	475	300		BSW
	195/55R15	85H		10	6J	201	595	515	300		BSW
	185/60R15	84T		10	5 1/2J	189	603	500	300		BSW
	175/65R15	84T		10	5J	177	609	500	300		BSW
	215/70R15	98T		6.5	6 1/2J	221	683	750	300		BSW
16	215/55R16	97H	XL	7	7J	226	642	730	340		BSW
	225/60R16	98T		6.5	6 1/2J	228	676	750	300		BSW
	205/65R16	95T		6	6J	209	672	690	300		BSW
	225/65R16	100T		6.5	6 1/2J	228	698	800	300		BSW
	235/65R16	103T		10	7J	240	712	875	300		BSW
17	215/45R17	91T	XL	10	7J	213	626	615	340		BSW
	225/45R17	94H	XL	7.5	7 1/2J	225	634	670	340		BSW
	235/45R17	97T	XL	10	8J	236	644	730	340		BSW
	205/50R17	93H	XL	10	6 1/2J	214	638	650	340		BSW
	225/50R17	98H	XL	7	7J	233	658	750	340		BSW
	215/55R17	94T		7	7J	226	668	670	300		BSW
	225/55R17	97T		7	7J	233	680	730	300		BSW
	235/55R17	99H		7.5	7 1/2J	245	690	775	300		BSW
	225/60R17	99T		6.5	6 1/2J	228	702	775	300		BSW
	235/60R17	102T		10	7J	240	714	850	300		BSW
18	215/65R17	99T		10	6 1/2J	221	712	775	300		BSW
	225/40R18	92H	XL	10	8J	230	637	630	340		BSW
	245/40R18	97H	XL	10	8 1/2J	248	653	730	340		BSW
	215/45R18	93H	XL	10	7J	213	651	650	340		BSW
	225/45R18	95T	XL	10	7 1/2J	225	659	690	340		BSW
	235/50R18	101H	XL	10	7 1/2J	245	693	825	340		BSW
	215/55R18	95T		10	7J	226	693	690	300		BSW
	225/55R18	98T		10	7J	233	705	750	300		BSW
225/60R18	100T		10	6 1/2J	228	727	800	300		BSW	

XL: Extra Load LI: Load Index SS: Speed Symbol BSW: Black Sidewall

W517 WINTER TAMER

M+S 



A specially designed SUV studded winter tire specifically developed for the North American market. The Z-shaped main groove and sipe pattern improve traction performance on ice and snow. The quantity and position of the studs strengthen tire grip and effectively provide safe driving in winter conditions.



Winter Performance

The Z-shaped main grooves improve traction, prevent skidding, and reduce noise while driving on ice and snow.



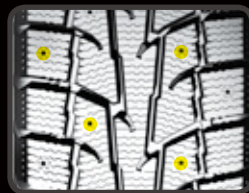
Groove Design

Serrated groove edges bite into ice and snow for improved grip and traction performance.



Sipe Design

Interlocking sipes ensure driving safety by improving block rigidity and handling.



Stud Arrangement

The number and locations of studs are designed to maximize tire grip and improve skid resistance.

Rim	Size	LI/SS		T.D.	Standard Rim	S.W.	O.D.	Max. Load	Max. Pressure	U.T.Q.G.	Sidewall
				mm	inch	mm	mm	kg	kPa		
15	235/75R15	105S		11	6 1/2J	235	733	925	300		BSW
	225/70R16	103S		11	6 1/2J	228	722	875	300		BSW
16	235/70R16	106S		11	7J	240	736	950	300		BSW
	245/70R16	107S		11	7J	248	750	975	300		BSW
	245/75R16	111S		11	7J	248	774	1090	300		BSW
	LT225/75R16	115/112Q		13	6J	223	744	1215/1120	550		BSW
	LT245/75R16	120/116Q		13	7J	248	774	1380/1260	550		BSW
17	245/65R17	107S		11	7J	248	750	975	300		BSW
	245/70R17	110S		11	7J	248	776	1060	300		BSW
	265/70R17	115S		11	8J	272	804	1215	300		BSW
	LT245/70R17	119/116Q		13	7J	248	776	1360/1250	550		BSW
	LT265/70R17	121/118Q		13	8J	272	804	1450/1320	550		BSW
18	LT245/75R17	121/118R		13	7J	248	800	1450/1320	550		BSW
	235/55R18	100T		11	7 1/2J	245	715	800	300		BSW
	255/55R18	105T		11	8J	265	737	925	300		BSW
	235/60R18	107T	XL	11	7J	240	739	975	340		BSW
	245/60R18	105T		11	7J	248	751	925	300		BSW
	265/60R18	110T		11	8J	272	775	1060	300		BSW
	235/65R18	106T		11	7J	240	763	950	300		BSW
	275/65R18	116S		11	8J	279	815	1250	300		BSW
	LT275/65R18	123/120R		13	8J	279	815	1550/1400	550		BSW
	255/70R18	113S		11	7 1/2J	260	815	1150	300		BSW
19	LT275/70R18	125/122R		13	8J	279	843	1650/1500	550		BSW
	235/45R19	95H		11	8J	236	695	690	300		BSW
	225/55R19	99H		11	7J	233	731	775	300		BSW
	235/55R19	101H		11	7 1/2J	245	741	825	300		BSW
20	245/55R19	103T		11	7 1/2J	253	753	875	300		BSW
	245/50R20	102H		11	7 1/2J	253	754	850	300		BSW
	275/55R20	117S	XL	11	8 1/2J	284	810	1285	340		BSW
	275/60R20	119S	XL	11	8J	279	838	1360	340		BSW

XL: Extra Load LI: Load Index SS: Speed Symbol BSW: Black Sidewall

VAN WINTER TAMER

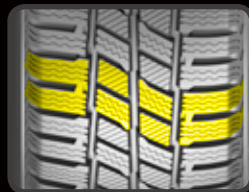


A winter tire product specifically designed for commercial light trucks.



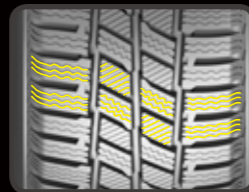
Handling

The wide and jagged groove design efficiently drains snow and water out of the tire to improve handling in winter weather.



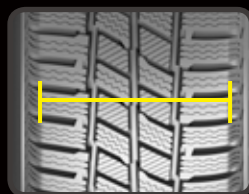
Tread Design

The intersecting blocks, grooves, and sipes allow for more effective braking on ice and snow.



Grip

The precision cut sipes enhance grip on ice and snow to allow for a safer driving experience.



Comfortable Drive

The tread width and block patterns ensure a secure contact with the road surface to improve driving comfort.

Rim	Size	LI/SS	T.D.	Standard Rim	S.W.	O.D.	Max. Load	Max. Pressure	U.T.Q.G.	Sidewall
			mm	inch	mm	mm	kg	kPa		
14	185R14C	102/100R	9.6	5 1/2J	188	650	1700/3200	450		BSW
	195R14C	106/104R	10	5 1/2J	198	666	1900/3600	450		BSW
15	195/70R15C	104/102S	10	6J	201	655	1800/3400	450		BSW
	205/70R15C	106/104S	10	6J	209	669	1900/3600	450		BSW
	215/70R15C	113/111S	10	6 1/2J	221	683	2300/4360	525		BSW
	225/70R15C	112/110S	10	6 1/2J	228	697	2240/4240	450		BSW
	195R15C	106/104R	10	5 1/2J	198	690	1900/3600	450		BSW
	195/60R16C	99/97T	10.2	6J	201	640	1550/2920	375		BSW
16	215/60R16C	108/106T	10	6 1/2J	221	664	2000/3800	475		BSW
	195/65R16C	104/102T	10	6J	201	660	1800/3400	475		BSW
	205/65R16C	107/105T	10	6J	209	672	1950/3700	475		BSW
	215/65R16C	109/107T	10	6 1/2J	221	686	2060/3900	475		BSW
	225/65R16C	112/110T	10	6 1/2J	228	698	2240/4240	475		BSW
	235/65R16C	115/113R	10.2	7J	240	712	2430/4600	475		BSW
	185/75R16C	104/102R	9.6	5J	184	684	1800/3400	475		BSW
	195/75R16C	107/105R	10	5 1/2J	196	698	1950/3700	475		BSW
	205/75R16C	113/111R	10	5 1/2J	203	714	2300/4360	525		BSW
	215/75R16C	116/114R	10	6J	216	728	2500/4720	525		BSW
225/75R16C	118/116R	10	6J	223	744	2640/5000	525		BSW	
225/75R16C	121/120R	10	6J	223	744	1450/1400	575		BSW	



VR1 RACING CHAMPOINT



The normal operating state of the tire has good dry and wet performance to meet all normal usage needs. When reaching higher operating temperatures the softened tread becomes viscous to improve grip performance and meet competition requirements.



Handling

The broad lug design on the outside of the tire ensures great handling, especially when turning.



Groove Design

Tread pattern grooves are specially angled to prevent damage while emergency braking or drifting.



Driving Stability

The increased width of the central rib ensures driving stability when traveling at high speeds.

Sporty Sidewall Design

High-end product with unique sidewall design; employs curved incisions which fully reflect its sporty look.



Rim	Size	LI/SS		T.D.	Standard Rim	S.W.	O.D.	Max. Load	Max. Pressure	U.T.Q.G.	Sidewall
				mm	inch	mm	mm	kg	kPa		
18	235/40ZR18	95W	XL	6.5	8 1/2J	241	645	690	340	180/AA/A	BSW
	265/35ZR18	97W	XL	6.5	9 1/2J	271	643	730	340	180/AA/A	BSW

XL: Extra Load LI: Load Index SS: Speed Symbol UTQG: Uniform Tire Quality Grade BSW: Black Sidewall



Important Tips for Optimal Tire Performance :

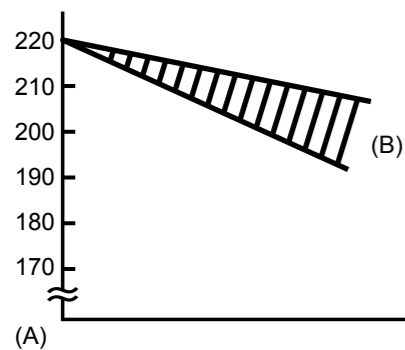
- 1 Maintain optimum air pressure
- 2 Inspect tread grooves to ensure tires are safe and legal
- 3 Visually check for tire damage

Ensure you check your tires once a month and before long trips to maintain performance and ensure safety.

Why is it important I have the correct tire pressure?

A tire at optimum air pressure should will ensure more safety, provide greater driving performance, improve tire life and reduce fuel consumption.

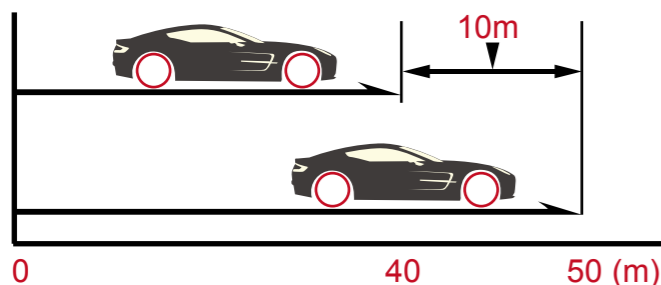
Tire air pressure decreases naturally (little by little). It is generally accepted that air pressure in tires on a passenger car decreases by 5–10% (10–20kPa) every month.



Tire size: 195/65R 15
 Starting pressure: 220kPa (100kPa=1.0kgf/cm²)
 (A) Air pressure (kPa)
 (B) Decreases by 10-20kPa a month

Dangers of Using Worn Tire

Worn tires need a longer stopping distance on wet roads.



At the same speed (80km/h) and from the same braking point, there is a difference of 10 meters!

(A) New tire
 (B) Worn tire (worn out to 1.6mm)

Why is it Important I Check for Tire Wear?

The deeper the groove, which is on the surface of the tire, the more grip a tire will have. As your tread pattern wears over time, the grip will begin to decrease. Never use a tire where even just one tread wear indicator is exposed.

TWI:Tread Wear Indicator(1.6mm)



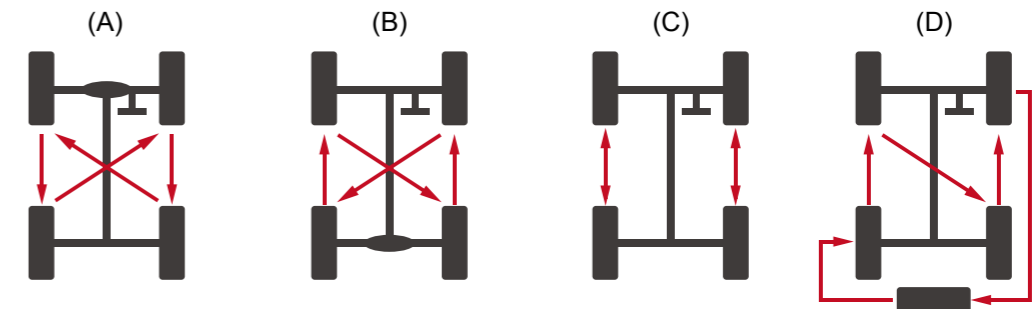
Indicator Mark:Triangle Symbol "△"

<Tire Tread Wear Indicator >

What are the advantages of tire rotation?

- 1 Help Prevent Uneven Tread Wear
- 2 Extension of Tire Service Life (money in your wallet)
- 3 Averaging of Tire Fatigue

Note: The front-wheel tires of an FF vehicle wear two or three times faster than the rear-wheel tires because the front-wheel tires function for both driving and steering.



Examples of Tire Rotation

(A) FF Vehicle (B) FR Vehicle (C) Tires with Directional Patterns (D) Spare Tire Included

Note

A series of horizontal dashed lines for writing notes on the left side of the page.

A series of horizontal dashed lines for writing notes on the right side of the page.