

# BLACKHAWK

THE ROAD IS YOUR PREY

## BLACKHAWK

REV 21.01

**BLACKHAWK Headquarters**  
No. 43 Zhengzhou Road,  
Shibei District, Qingdao, China  
+86 400 660 8329

**BLACKHAWK Americas**  
1 Kenview Blvd, Suite 300,  
Brampton ON, Canada L6T 5E6  
+(855)499-3240

**PASSENGER & LIGHT TRUCK TIRE CATALOG**





BLACKHAWK

PC TIRES



HU01 P03



HU02 P05



HH01 P09



HH02 P13



HH11 P15



HC01 P17

SUV TIRES



HS01 P19



HS02 P21



HT01 P23



HA01 P27



HA11 P29



HM01 P31

LTR TIRES



HL01 P33



HL02 P35



HL03 P37



HST01 P39

WINTER TIRES



HH4S P41



HW01 P43



HW02 P45



HW03 P47



HW06 P49



HW07 P51



# HU01



The STREET-H HU01 is an ultra-high performance all-season tire, designed for performance under all weather conditions.



## PATTERN DESIGN & FEATURES

### Product Design

### Product Performance



**Tapered Tread Edges**  
Promotes uniform contact pressure for improved stability.



**Tread Block Design**  
The tread blocks are grooved to reinforce block stiffness, promote even load distribution, and improve handling and tread wear.



**Groove Design**  
Aggressive high angle grooves enhance water drainage to improve wet handling and hydroplaning resistance.



## SIZES



	SIZE	PR	LI	SR	XL OR NOT	SIDEWALL	T.D (mm)	STANDARD RIM	S.W (mm)	O.D	UTQG	MAX LOAD (kg)	PRESSURE (kpa)	PLANT
16	205/50ZR16	--	87	W	--	BSW	8.2	6 1/2J	214	612	480/AA/A	545	300	VP
	205/55ZR16	--	91	W	--	BSW	8.3	6 1/2J	214	632	480/AA/A	615	300	VP
	215/55ZR16	--	97	W	XL	BSW	8.2	7J	226	642	480/AA/A	730	340	VP
	225/50ZR16	--	92	W	--	BSW	8.2	7J	233	632	480/AA/A	630	300	VP
	225/55ZR16	--	99	W	XL	BSW	8.2	7J	233	654	480/AA/A	775	340	VP
17	205/40ZR17	--	84	W	XL	BSW	8.2	7 1/2J	212	596	480/AA/A	500	340	VP
	205/45ZR17	--	84	W	--	BSW	8.2	7J	206	616	480/AA/A	500	300	VP
	205/50ZR17	--	93	W	XL	BSW	8.2	6 1/2J	214	618	480/AA/A	650	340	VP
	215/45ZR17	--	91	W	XL	BSW	8.0	7J	213	628	480/AA/A	615	340	VP
	215/50ZR17	--	95	W	XL	BSW	8.2	7J	226	648	480/AA/A	690	340	VP
	215/55ZR17	--	98	W	XL	BSW	8.2	7J	226	668	480/AA/A	750	340	VP
	225/45ZR17	--	94	W	XL	BSW	8.2	7 1/2J	225	634	480/AA/A	670	340	VP
	225/50ZR17	--	98	W	XL	BSW	8.2	7J	233	658	480/AA/A	750	340	VP
	225/55ZR17	--	101	W	XL	BSW	8.2	7J	233	680	480/AA/A	825	340	VP
	235/45ZR17	--	97	W	XL	BSW	8.2	8J	236	644	480/AA/A	730	340	VP
235/55ZR17	--	99	W	--	BSW	8.2	7 1/2J	245	690	480/AA/A	775	300	VP	
245/40ZR17	--	95	W	XL	BSW	8.2	8 1/2J	248	628	480/AA/A	690	340	VP	
245/45ZR17	--	99	W	XL	BSW	8.2	8J	243	652	480/AA/A	775	340	VP	
18	215/35ZR18	--	84	W	XL	BSW	8.0	7 1/2J	218	607	480/AA/A	500	340	VP
	225/40ZR18	--	92	W	XL	BSW	8.2	8J	230	637	480/AA/A	630	340	VP
	225/45ZR18	--	95	W	XL	BSW	8.2	7 1/2J	225	659	480/AA/A	690	340	VP
	235/40ZR18	--	95	W	XL	BSW	8.2	8 1/2J	241	645	480/AA/A	690	340	VP
	235/50ZR18	--	101	W	XL	BSW	8.2	7 1/2J	245	693	480/AA/A	825	340	VP
	245/40ZR18	--	97	W	XL	BSW	8.2	8 1/2J	248	653	480/AA/A	730	340	VP
	245/45ZR18	--	100	W	XL	BSW	8.2	8J	243	677	480/AA/A	800	340	VP
255/45ZR18	--	103	W	XL	BSW	8.2	8 1/2J	255	687	480/AA/A	875	340	VP	
19	245/40ZR19	--	98	W	XL	BSW	8.2	8 1/2J	248	679	480/AA/A	750	340	VP
	245/45ZR19	--	98	W	--	BSW	8.2	8J	243	703	480/AA/A	750	300	VP
20	245/35ZR20	--	95	W	XL	BSW	8.2	8 1/2J	248	680	480/AA/A	690	340	VP
	245/45ZR20	--	103	W	XL	BSW	8.2	8J	243	728	480/AA/A	875	340	VP
	255/35ZR20	--	97	W	XL	BSW	8.2	9J	260	686	480/AA/A	730	340	VP
	275/40ZR20	--	106	W	XL	BSW	8.2	9 1/2J	278	728	480/AA/A	950	340	VP



# HU02

HU02's tread formulation is specially designed to ensure excellent rolling resistance as well as a stronger apex to prevent and damage to the bead.



## PATTERN DESIGN & FEATURES

### Product Design

### Product Performance



#### Wet Performance

The tread's four main grooves efficiently drain water for improved safety in wet weather conditions.



#### All-Season Performance

The inner tread elements provide stronger grip on both wet and dry roads.



#### Shoulder Design

The external shoulder blocks provide ideal rigidity and excellent handling.

## SIZES



	SIZE	PR	LI	SR	XL OR NOT	SIDEWALL	T.D (mm)	STANDARD RIM	S.W (mm)	O.D	UTQG	MAX LOAD (kg)	PRESSURE (kpa)	PLANT	MARK
16	195/55R16	--	91	V	XL	BSW	8.0	6J	201	620	300/AA/A	615	340	CP	--
	195/55RF16	--	91	V	XL	BSW	8.0	6J	201	620	300/A/A	615	340	CP	RFT
	205/45ZR16	--	87	W	XL	BSW	8.2	7J	206	590	300/AA/A	545	340	CP	--
	205/50ZR16	--	87	W	--	BSW	8.2	6 1/2J	214	612	300/AA/A	545	300	CP	--
	205/55ZR16	--	94	W	XL	BSW	8.2	6 1/2J	214	632	300/AA/A	670	340	CP	--
	205/55ZRF16	--	94	W	XL	BSW	8.2	6 1/2J	214	632	300/AA/A	670	340	CP	RFT
	205/60R16	--	92	V	--	BSW	8.2	6J	209	652	300/AA/A	630	300	CP	--
	205/65R16	--	95	V	--	BSW	8.2	6J	209	672	300/AA/A	690	300	CP	--
	215/55ZR16	--	97	W	XL	BSW	8.2	7J	226	642	300/AA/A	730	340	CP	--
	225/55ZR16	--	99	W	XL	BSW	8.2	7J	233	654	300/AA/A	775	340	VP/CP	--
17	225/55ZRF16	--	99	W	XL	BSW	8.2	7J	233	654	300/A/A	775	340	CP	RFT
	225/60R16	--	98	V	--	BSW	8.2	6 1/2J	228	676	300/AA/A	750	300	CP	--
	235/60R16	--	100	V	--	BSW	8.2	7J	240	688	300/AA/A	800	300	CP	--
	205/40ZR17	--	84	W	XL	BSW	8.2	7 1/2J	212	596	300/AA/A	500	340	CP	--
	205/45ZR17	--	88	W	XL	BSW	8.0	7J	206	616	300/AA/A	560	340	CP	--
	205/50ZR17	--	93	W	XL	BSW	8.0	6 1/2J	214	638	400/AA/A	650	340	VP/CP	--
	205/50ZRF17	--	93	W	XL	BSW	8.0	6 1/2J	214	638	400/A/A	650	340	CP	RFT
	215/40ZR17	--	87	W	XL	BSW	8.2	7 1/2J	218	604	300/AA/A	545	340	VP/CP	--
	215/45ZR17	--	91	W	XL	BSW	8.2	7J	213	626	300/AA/A	615	340	VP/CP	--
	215/50ZR17	--	95	W	XL	BSW	8.2	7J	226	648	300/AA/A	690	340	CP	--
17	215/55ZR17	--	94	W	--	BSW	8.2	7J	226	668	300/AA/A	670	300	VP/CP	--
	225/45ZR17	--	94	W	XL	BSW	8.2	7 1/2J	225	634	300/AA/A	670	340	VP/CP	--
	225/45ZRF17	--	94	W	XL	BSW	8.2	7 1/2J	225	634	300/AA/A	670	340	CP	RFT
	225/50ZR17	--	98	W	XL	BSW	8.2	7J	233	658	300/AA/A	750	340	VP/CP	--
	225/50ZRF17	--	98	W	XL	BSW	8.2	7J	233	658	300/A/A	750	340	CP	RFT



SIZES



	SIZE	PR	LI	SR	XL OR NOT	SIDEWALL	T.D (mm)	STANDARD RIM	S.W (mm)	O.D	UTQG	MAX LOAD (kg)	PRESSURE (kpa)	PLANT	MARK
17	225/55ZR17	--	101	W	XL	BSW	8.2	7J	233	680	300/AA/A	825	340	VP/CP	--
	225/55ZRF17	--	101	W	XL	BSW	8.2	7J	233	680	300/AA/A	825	340	CP	RFT
	235/45ZR17	--	97	W	XL	BSW	8.2	8J	236	644	300/AA/A	730	340	VP/CP	--
	235/50ZR17	--	100	W	XL	BSW	8.0	7 1/2J	245	668	300/AA/A	800	340	CP	--
	235/55ZR17	--	103	W	XL	BSW	8.0	7 1/2J	245	690	300/AA/A	875	340	CP	--
	245/40ZR17	--	95	W	XL	BSW	8.2	8 1/2J	248	628	300/AA/A	690	340	VP/CP	--
	245/45ZR17	--	99	W	XL	BSW	8.0	8J	243	652	300/AA/A	775	340	CP	--
18	205/40ZR18	--	82	W	--	BSW	8.2	7 1/2J	212	621	300/AA/A	475	300	CP	--
	215/35ZR18	--	84	Y	XL	BSW	8.0	7 1/2J	218	607	300/AA/A	500	340	CP	--
	225/40ZR18	--	92	W	XL	BSW	8.2	8J	230	637	300/AA/A	630	340	VP/CP	--
	225/40ZRF18	--	92	W	XL	BSW	8.2	8J	230	637	300/A/A	630	340	CP	RFT
	225/45ZR18	--	95	Y	XL	BSW	8.0	7 1/2J	225	659	300/AA/A	690	340	CP	--
	225/45ZRF18	--	95	W	XL	BSW	8.0	7 1/2J	225	659	300/A/A	690	340	CP	RFT
	235/40ZR18	--	95	W	XL	BSW	8.2	8 1/2J	241	645	300/AA/A	690	340	VP/CP	--
	235/45ZR18	--	98	Y	XL	BSW	8.0	8J	236	669	300/AA/A	750	340	CP	--
	235/50ZR18	--	101	W	XL	BSW	8.0	7 1/2J	245	693	300/AA/A	825	340	CP	--
	245/40ZR18	--	97	Y	XL	BSW	8.2	8 1/2J	248	653	300/AA/A	730	340	VP/CP	--
	245/40ZRF18	--	97	W	XL	BSW	8.2	8 1/2J	248	653	300/A/A	730	340	CP	RFT
	245/45ZR18	--	100	W	XL	BSW	8.2	8J	243	677	300/AA/A	800	340	VP/CP	--
	245/45ZRF18	--	100	W	XL	BSW	8.2	8J	243	677	300/A/A	800	340	CP	RFT
	245/50ZRF18	--	100	Y	--	BSW	8.2	7 1/2J	253	703	300/A/A	800	300	CP	RFT
	255/35ZR18	--	94	Y	XL	BSW	8.0	9J	260	635	300/AA/A	670	340	CP	--
19	225/35ZR19	--	88	Y	XL	BSW	8.0	8J	230	641	300/AA/A	560	340	CP	--
	225/40ZR19	--	93	Y	XL	BSW	8.0	8J	230	663	300/AA/A	650	340	CP	--
	235/35ZR19	--	91	Y	XL	BSW	8.0	8 1/2J	241	647	300/AA/A	615	340	CP	--
	235/45ZR19	--	99	W	XL	BSW	8.0	8J	236	695	300/AA/A	775	340	CP	--

SIZES



	SIZE	PR	LI	SR	XL OR NOT	SIDEWALL	T.D (mm)	STANDARD RIM	S.W (mm)	O.D	UTQG	MAX LOAD (kg)	PRESSURE (kpa)	PLANT	MARK
	235/45ZRF19	--	99	W	XL	BSW	7.5	8J	236	695	300/A/A	775	340	CP	RFT
	245/35ZR19	--	93	Y	XL	BSW	8.0	81/2J	248	655	300/AA/A	650	340	CP	--
	245/40ZR19	--	98	Y	XL	BSW	8.0	81/2J	248	679	300/AA/A	750	340	CP	--
	245/45ZR19	--	102	Y	XL	BSW	8.0	8J	243	703	300/AA/A	850	340	CP	--
	245/45ZRF19	--	102	W	XL	BSW	8.0	8J	243	703	300/A/A	850	340	CP	RFT
	255/35ZR19	--	96	Y	XL	BSW	8.0	9J	260	661	300/AA/A	710	340	CP	--
	255/50RF19	--	103	V	--	BSW	8.0	8J	265	739	300/A/A	875	300	CP	RFT
	255/50ZR19	--	107	Y	XL	BSW	8.0	8J	265	739	300/AA/A	975	340	CP	--
	265/30ZR19	--	93	Y	XL	BSW	8.0	91/2J	271	643	300/AA/A	650	340	CP	--
	275/30ZR19	--	96	Y	XL	BSW	8.0	91/2J	278	649	300/AA/A	710	340	CP	--
	275/35ZR19	--	100	Y	XL	BSW	8.0	91/2J	278	675	300/AA/A	800	340	CP	--
	275/45ZR19	--	108	Y	XL	BSW	8.0	9J	273	731	300/AA/A	1000	340	CP	--
	285/45ZR19	--	111	Y	XL	BSW	8.0	91/2J	285	739	300/AA/A	1090	340	CP	--
20	225/35ZR20	--	93	Y	XL	BSW	8.0	8J	230	666	300/AA/A	650	340	CP	--
	225/35ZR20	--	90	Y	XL	BSW	8.0	8J	230	666	300/AA/A	600	340	CP	--
	245/30ZR20	--	90	Y	XL	BSW	8.0	81/2J	248	656	300/AA/A	600	340	CP	--
	245/30ZR20	--	95	Y	XL	BSW	8.0	81/2J	248	656	300/AA/A	690	340	CP	--
	245/35ZR20	--	95	Y	XL	BSW	8.0	81/2J	248	680	300/AA/A	690	340	CP	--
	245/45ZR20	--	103	Y	XL	BSW	8.0	8J	243	728	300/AA/A	875	340	CP	--
	255/45ZR20	--	105	Y	XL	BSW	8.0	81/2J	255	738	300/AA/A	925	340	CP	--
	275/30ZR20	--	97	Y	XL	BSW	8.0	91/2J	278	674	300/AA/A	730	340	CP	--
	275/40ZR20	--	106	Y	XL	BSW	8.0	91/2J	278	728	300/AA/A	950	340	CP	--
	275/45ZR20	--	110	Y	XL	BSW	8.0	9J	273	756	300/AA/A	1060	340	CP	--
21	285/35ZR21	--	105	Y	XL	BSW	8.0	10J	290	733	300/AA/A	925	340	CP	--
	295/35ZR21	--	107	Y	XL	BSW	8.0	101/2J	301	739	300/AA/A	975	340	CP	--
	325/30ZR21	--	108	Y	XL	BSW	8.0	111/2J	331	729	300/AA/A	1000	340	CP	--



# HH01

Excellent handling, superior comfort, high-speed stability and low running noise provide a great driving experience.



## PATTERN DESIGN & FEATURES

### Product Design

### Product Performance



#### Special Tread

The tread is composed of a silicon compound formulation which lowers rolling resistance for better fuel economy. Tread pattern is designed for great handling for a safer and more comfortable driving experience.



#### Noise Emission

The tread block pitch order and shoulder grooves effectively reduce running noise and ensure excellent performance.



#### Safety

The four main grooves and central rib are designed to provide excellent water drainage to improve driving performance for both wet and dry roads.



## SIZES



	SIZE	PR	LI	SR	XL OR NOT	SIDEWALL	T.D (mm)	STANDARD RIM	S.W (mm)	O.D	UTQG	MAX LOAD (kg)	PRESSURE (kpa)	PLANT
13	165/65R13	--	77	T	--	BSW	7.6	5.00B	170	544	420/A/A	412	300	CP
	165/70R13	--	83	T	XL	BSW	7.5	5.00B	170	562	420/A/A	487	340	VP/CP
	175/60R13	--	77	T	--	BSW	8.0	5.00B	177	540	420/A/A	412	300	CP
	175/70R13	--	82	T	--	BSW	8.0	5.00B	177	576	420/A/A	475	300	VP/CP
	175/70R13	--	86	T	XL	RWL	8.0	5.00B	177	576	420/A/A	530	340	CP
	185/60R13	--	80	T	--	BSW	8.0	5.50B	189	552	420/A/A	450	300	CP
	185/60R13	--	80	T	--	WR	7.6	5.50B	189	552	420/A/A	450	300	CP
	185/70R13	--	86	T	--	BSW	7.8	5.50B	189	590	420/A/B	530	300	CP
14	165/60R14	--	75	H	--	BSW	8.0	5J	170	554	420/A/A	387	300	CP
	165/70R14	--	85	T	XL	BSW	8.0	5J	170	588	420/A/A	515	340	CP
	175/60R14	--	79	H	--	BSW	8.0	5J	177	566	420/A/A	437	300	CP
	175/65R14	--	86	T	XL	BSW	8.0	5J	177	584	420/A/A	530	340	VP/CP
	175/65R14	--	82	T	--	BSW	8.0	5J	177	584	420/A/A	475	300	CP
	175/65R14	--	86	H	XL	BSW	8.0	5J	177	584	420/A/A	530	340	CP
	175/70R14	--	88	T	XL	BSW	8.0	5J	177	602	420/A/A	560	340	VP/CP
	175/70R14	--	84	T	--	BSW	8.0	5J	177	602	420/A/A	500	300	VP/CP
	185/60R14	--	82	H	--	BSW	8.0	5 1/2J	189	578	420/A/A	475	300	VP/CP
	185/65R14	--	86	T	--	BSW	8.0	5 1/2J	189	596	420/A/A	530	300	VP/CP
	185/65R14	--	86	H	--	BSW	8.0	5 1/2J	189	596	420/A/A	530	300	VP/CP
	185/70R14	--	88	H	--	BSW	8.0	5 1/2J	189	616	420/A/A	560	300	VP/CP
	195/60R14	--	86	H	--	BSW	8.0	6J	201	590	420/A/A	530	300	VP/CP
	195/65R14	--	89	H	--	BSW	8.0	6J	201	610	420/A/A	580	300	VP/CP
	195/70R14	--	91	T	--	BSW	8.0	6J	201	630	420/A/A	615	300	VP/CP
	205/60R14	--	88	T	--	BSW	8.0	6J	209	602	420/A/A	560	300	CP
205/70R14	--	98	T	XL	BSW	8.0	6J	209	644	420/A/A	750	340	VP/CP	
205/70R14	--	95	T	--	BSW	8.0	6J	209	644	420/A/A	690	300	CP	

XL: Extra Load LI: Load Index SS: Speed Symbol UTQG: Uniform Tire Quality Grade BSW: Black Sidewall



SIZES

SIZE	PR	LI	SR	XL OR NOT	SIDEWALL	T.D (mm)	STANDARD RIM	S.W (mm)	O.D	UTQG	MAX LOAD (kg)	PRESSURE (kpa)	PLANT
15 175/65R15	--	84	H	--	BSW	8.0	5J	177	609	420/A/A	500	300	CP
185/55R15	--	82	V	--	BSW	8.0	6J	194	585	420/A/A	475	300	VP/CP
185/60R15	--	88	H	XL	BSW	8.0	5 1/2J	189	603	420/A/A	560	340	VP/CP
185/60R15	--	84	H	--	BSW	8.0	5 1/2J	189	603	420/A/A	500	300	CP
185/65R15	--	92	H	XL	BSW	8.0	5 1/2J	189	621	420/A/A	630	340	VP/CP
185/65R15	--	88	H	--	BSW	8.0	5 1/2J	189	621	420/A/A	560	300	CP
195/50R15	--	82	V	--	BSW	8.0	6J	201	577	420/A/A	475	300	VP/CP
195/55R15	--	85	V	--	BSW	8.0	6J	201	595	420/A/A	515	300	VP/CP
195/60R15	--	88	V	--	BSW	8.0	6J	201	615	420/A/A	560	300	VP/CP
195/60R15	--	88	H	--	BSW	8.0	6J	201	615	420/A/A	560	300	VP/CP
195/65R15	--	91	H	--	BSW	8.0	6J	201	635	420/A/A	615	300	VP/CP
195/65R15	--	91	V	--	BSW	8.0	6J	201	635	420/A/A	615	300	CP
195/65R15	--	95	T	XL	BSW	8.0	6J	201	635	420/A/A	690	340	CP
205/60R15	--	95	H	XL	BSW	8.0	6J	209	627	420/A/A	690	340	VP/CP
205/60R15	--	91	H	--	BSW	8.0	6J	209	627	420/A/A	615	300	CP
205/65R15	--	94	V	--	BSW	8.0	6J	209	647	420/A/A	670	300	VP/CP
205/65R15	--	94	H	--	BSW	8.0	6J	209	647	420/A/A	670	300	VP/CP
205/70R15	--	96	T	--	BSW	8.0	6J	209	669	420/A/B	710	300	VP/CP
205/70R15	--	96	S	--	BSW	8.0	6J	209	669	420/A/B	710	300	CP
215/60R15	--	94	H	--	BSW	8.0	6 1/2J	221	639	420/A/A	670	300	VP/CP
215/65R15	--	96	V	--	BSW	8.8	6 1/2J	221	661	420/A/A	710	300	VP/CP
215/65R15	--	96	H	--	BSW	8.8	6 1/2J	221	661	420/A/A	710	300	VP/CP
215/70R15	--	98	H	--	BSW	8.8	6 1/2J	221	683	420/A/A	750	300	VP/CP
215/70R15	--	98	T	--	BSW	8.8	6 1/2J	221	683	420/A/A	750	300	VP/CP
225/60R15	--	96	V	--	BSW	8.0	6 1/2J	228	651	420/A/A	710	300	CP
16 195/50R16	--	88	V	XL	BSW	8.0	6J	201	602	420/A/A	560	340	CP
195/60R16	--	89	V	--	BSW	8.4	6J	201	640	420/A/A	580	300	CP
205/50R16	--	87	H	--	BSW	8.0	6 1/2J	214	612	420/A/A	545	300	VP/CP
205/50R16	--	87	V	--	BSW	8.0	6 1/2J	214	612	420/A/A	545	300	CP
205/55R16	--	94	V	XL	BSW	8.0	6 1/2J	214	632	420/A/A	670	340	VP/CP
205/55R16	--	91	H	--	BSW	8.0	6 1/2J	214	632	420/A/A	615	300	VP/CP
205/55R16	--	91	V	--	BSW	8.0	6 1/2J	214	632	420/A/A	615	300	CP
205/60R16	--	92	V	--	BSW	8.0	6J	209	652	420/A/A	630	300	VP/CP

SIZES

SIZE	PR	LI	SR	XL OR NOT	SIDEWALL	T.D (mm)	STANDARD RIM	S.W (mm)	O.D	UTQG	MAX LOAD (kg)	PRESSURE (kpa)	PLANT
16 205/60R16	--	92	H	--	BSW	8.0	6J	209	652	420/A/A	630	300	VP/CP
205/60R16	--	96	V	XL	BSW	8.0	6J	209	652	420/A/A	710	340	CP
205/65R16	--	95	H	--	BSW	8.0	6J	209	672	420/A/A	690	300	VP/CP
215/55R16	--	97	H	XL	BSW	8.0	7J	226	642	420/A/A	730	340	VP/CP
215/60R16	--	95	V	--	BSW	8.0	6 1/2J	221	664	420/A/A	690	300	VP/CP
215/60R16	--	95	H	--	BSW	8.0	6 1/2J	221	664	420/A/A	690	300	VP/CP
215/65R16	--	98	T	--	BSW	8.0	6 1/2J	221	686	420/A/A	750	300	VP/CP
215/65R16	--	98	H	--	BSW	8.0	6 1/2J	221	686	420/A/A	750	300	CP
225/50R16	--	92	V	--	BSW	8.0	7J	233	632	420/A/A	630	300	VP/CP
225/60R16	--	98	H	--	BSW	8.0	6 1/2J	228	676	420/A/A	750	300	VP/CP
225/65R16	--	100	H	--	BSW	8.2	6 1/2J	228	698	420/A/A	800	300	VP
235/65R16	--	103	H	--	BSW	8.0	7J	240	712	420/A/B	875	300	CP
17 205/50R17	--	89	V	--	BSW	8.0	6 1/2J	214	638	420/A/A	580	300	VP/CP
215/45R17	--	91	W	XL	BSW	8.0	7J	213	626	420/A/A	615	340	CP
215/50R17	--	91	V	--	BSW	8.0	7J	226	648	420/A/A	615	300	VP/CP
215/55R17	--	94	V	--	BSW	8.0	7J	226	668	420/A/A	670	300	VP/CP
215/60R17	--	96	T	--	BSW	8.0	6 1/2J	221	690	420/A/A	710	300	VP/CP
215/60R17	--	96	H	--	BSW	8.0	6 1/2J	221	690	420/A/A	710	300	CP
215/65R17	--	99	T	--	BSW	8.0	6 1/2J	221	712	420/A/A	775	300	VP/CP
225/45R17	--	94	W	XL	BSW	8.0	7 1/2J	225	634	420/A/A	670	340	CP
225/50R17	--	94	V	--	BSW	8.0	7J	233	658	420/A/A	670	300	VP/CP
225/50R17	--	94	H	--	BSW	8.0	7J	233	658	420/A/A	670	300	CP
225/55R17	--	97	W	--	BSW	8.0	7J	233	680	420/A/A	730	300	VP/CP
225/55R17	--	97	V	--	BSW	8.0	7J	233	680	420/A/A	730	300	VP/CP
225/60R17	--	99	H	--	BSW	8.0	6 1/2J	228	702	420/A/A	775	300	VP/CP
235/45R17	--	97	W	XL	BSW	8.0	8J	236	644	420/A/A	730	340	CP
235/60R17	--	102	T	--	BSW	8.0	7J	240	714	420/A/A	850	300	VP/CP
18 235/40R18	--	95	W	XL	BSW	8.0	8 1/2J	241	645	420/A/A	690	340	CP
235/40R18	--	91	W	--	BSW	8.0	8 1/2J	241	645	420/A/A	615	300	CP
235/55R18	--	100	V	--	BSW	8.0	7 1/2J	245	715	420/A/A	800	300	VP/CP
235/60R18	--	103	H	--	BSW	8.0	7J	240	739	420/A/A	875	300	VP/CP
235/60R18	--	107	V	XL	BSW	8.0	7J	240	739	420/A/A	975	340	CP



STREET-H

**BLACKHAWK  
TIRE**

# HH02

The STREET-H HH02 is designed with four longitudinal grooves and a tread formula that provides excellent handling on dry and wet road surfaces. The multi-pitch design with fine horizontal grooves reduces noise and vibration to offer a comfortable ride.



## PATTERN DESIGN & FEATURES

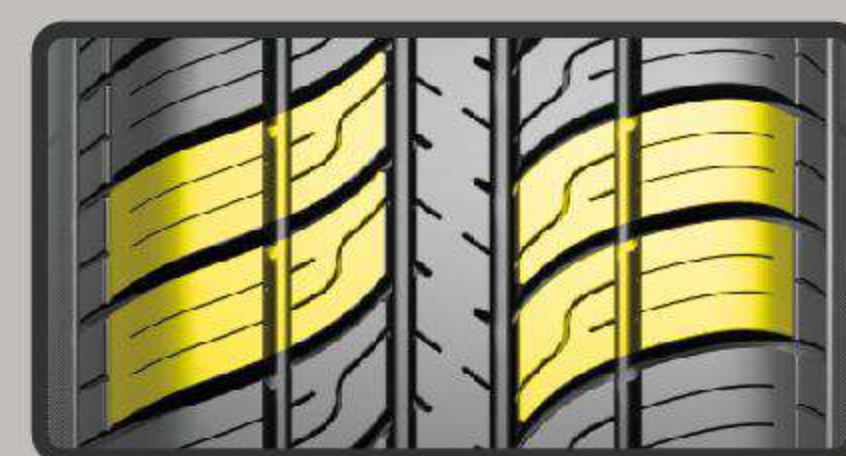
### Product Design

### Product Performance



#### Safety

Four longitudinal main grooves contribute to efficient drainage and provide great traction on wet roads; all-season design and enhanced tread compound ensure an even pressure under all weather conditions and excellent performance on both straight and winding pavements.



#### Silence

Optimally designed pattern order with varied pitches to diminish vibration and noise.



#### Comfort

Unique pattern design ensures good vibration absorption to increase driving comfort.

## SIZES

	SIZE	PR	LI	SR	XL OR NOT	SIDEWALL	T.D (mm)	STANDARD RIM	S.W (mm)	O.D	UTQG	MAX LOAD (kg)	PRESSURE (kpa)	PLANT
13	155/80R13	--	79	T	--	BSW	8	4.50B	157	578	360/A/A	437	300	CP
	165/80R13	--	83	T	--	BSW	8	4.50B	165	594	360/A/A	487	300	CP





# HH11

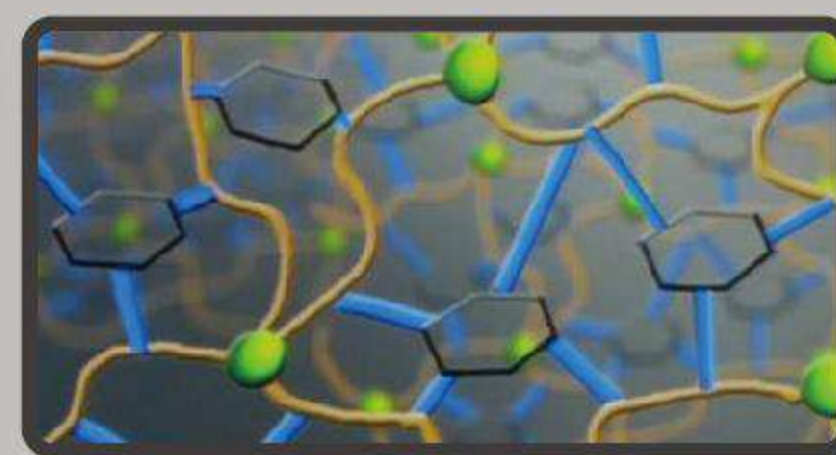
The STREET-H HH11 is a high-performance tire that uses the latest tread formula with a strong tire structure and advanced tread pattern design. It can be used in various road and weather conditions, offering a smooth ride and better handling with higher mileage.



## PATTERN DESIGN & FEATURES

### Product Design

### Product Performance



#### Higher mileage

Tread formula increases rubber density offering greater wear-resistance and fuel efficiency.



#### Improved handling stability

Three evenly distributed tread patterns with central stripes and large shoulder tread blocks combine to increase the tire contact area in improving the mileage and handling performance.



#### Driving Comfort

The optimized tread pitch arrangement better absorbs vibrations for a more comfortable ride.



#### Wet Performance

Tread sipes effectively break through water film to ensure greater grip on wet roads.



## SIZES



	SIZE	PR	LI	SR	XL OR NOT	SIDEWALL	T.D (mm)	STANDARD RIM	S.W (mm)	O.D	UTQG	MAX LOAD (kg)	PRESSURE (kpa)	PLANT
13	175/70R13	--	82	T	--	BSW	8.2	5.00B	177	576	420/A/A	475	300	VP
14	175/65R14	--	86	T	XL	BSW	8.2	5J	177	584	420/A/A	530	340	VP
	175/70R14	--	84	T	--	BSW	8.2	5J	177	602	420/A/A	500	300	VP
	185/60R14	--	82	H	--	BSW	8.2	5 1/2J	189	578	420/A/A	475	300	VP
	185/65R14	--	86	H	--	BSW	8.2	5 1/2J	189	596	420/A/A	530	300	VP
	185/70R14	--	88	H	--	BSW	8.2	5 1/2J	189	616	420/A/A	560	300	VP
	195/70R14	--	91	T	--	BSW	8.2	6J	201	630	420/A/A	615	300	VP
15	185/55R15	--	82	V	--	BSW	8.2	6J	194	585	420/A/A	475	300	VP
	185/60R15	--	88	H	XL	BSW	8.2	5 1/2J	189	603	420/A/A	560	340	VP
	185/65R15	--	92	H	XL	BSW	8.2	5 1/2J	189	621	420/A/A	630	340	VP
	195/50R15	--	82	V	--	BSW	8.2	6J	201	577	420/A/A	475	300	VP
	195/55R15	--	85	V	--	BSW	8.2	6J	201	595	420/A/A	515	300	VP
	195/60R15	--	88	H	--	BSW	8.2	6J	201	615	420/A/A	560	300	VP
	195/65R15	--	91	H	--	BSW	8.2	6J	201	635	420/A/A	615	300	VP
	205/60R15	--	95	H	XL	BSW	8.2	6J	209	627	420/A/A	690	340	VP
	205/65R15	--	94	H	--	BSW	8.2	6J	209	647	420/A/A	670	300	VP
	205/70R15	--	96	T	--	BSW	8.2	6J	209	669	420/A/A	710	300	VP
16	215/60R15	--	94	H	--	BSW	8.2	6 1/2J	221	639	420/A/A	670	300	VP
	215/65R15	--	96	H	--	BSW	8.2	6 1/2J	221	661	420/A/A	710	300	VP
	215/70R15	--	98	T	--	BSW	8.2	6 1/2J	221	683	420/A/A	750	300	VP
	205/50R16	--	87	H	--	BSW	8.2	6 1/2J	214	612	420/A/A	545	300	VP
	205/55R16	--	94	V	XL	BSW	8.2	6 1/2J	214	632	420/A/A	670	340	VP
	205/55R16	--	91	H	--	BSW	8.2	6 1/2J	214	632	420/A/A	615	300	VP
	205/60R16	--	92	H	--	BSW	8.2	6J	209	652	420/A/A	630	300	VP
	205/65R16	--	95	H	--	BSW	8.2	6J	209	672	420/A/A	690	300	VP
	215/55R16	--	97	H	XL	BSW	8.2	7J	226	642	420/A/A	730	340	VP
	215/60R16	--	95	H	--	BSW	8.2	6 1/2J	221	664	420/A/A	690	300	VP
17	215/65R16	--	98	T	--	BSW	8.2	6 1/2J	221	686	420/A/A	750	300	VP
	225/60R16	--	98	H	--	BSW	8.2	6 1/2J	228	676	420/A/A	750	300	VP
	225/65R16	--	100	H	--	BSW	8.2	6 1/2J	228	698	420/A/A	800	300	VP
	205/50R17	--	89	V	--	BSW	8.2	6 1/2J	214	638	420/A/A	580	300	VP
	215/45R17	--	87	W	--	BSW	8.2	7J	213	626	420/A/A	545	300	VP
	215/50R17	--	91	V	--	BSW	8.2	7J	226	648	420/A/A	615	300	VP
	215/55R17	--	94	V	--	BSW	8.2	7J	226	668	420/A/A	670	300	VP
	215/60R17	--	96	T	--	BSW	8.2	6 1/2J	221	690	420/A/A	710	300	VP
	215/65R17	--	99	T	--	BSW	8.2	6 1/2J	221	712	420/A/A	775	300	VP
	225/45R17	--	91	V	--	BSW	8.2	7 1/2J	225	634	420/A/A	615	300	VP
18	225/50R17	--	94	V	--	BSW	8.2	7J	233	658	420/A/A	670	300	VP
	225/55R17	--	97	W	--	BSW	8.2	7J	233	680	420/A/A	730	300	VP
	225/55R17	--	97	V	--	BSW	8.2	7J	233	680	420/A/A	730	300	VP
	225/60R17	--	99	H	--	BSW	8.2	6 1/2J	228	702	420/A/A	775	300	VP
	235/60R17	--	102	T	--	BSW	8.2	7J	240	714	420/A/A	850	300	VP
	225/45R18	--	95	W	XL	BSW	8.2	7 1/2J	225	659	420/A/A	690	340	VP
	235/45R18	--	94	V	--	BSW	8.2	8J	236	669	420/A/A	670	300	VP
	235/55R18	--	100	V	--	BSW	8.2	7 1/2J	245	715	420/A/A	800	300	VP
	235/60R18	--	103	H	--	BSW	8.2	7J	240	739	420/A/A	875	300	VP



# HC01

With a long service life and low rolling resistance HC01 is the perfect product for taxis and urban households.



## PATTERN DESIGN & FEATURES

### Product Design

### Product Performance



#### Fuel Economy

The silicon tread formulation and reinforced shoulder design effectively reduce rolling resistance for improved fuel economy.



#### Long Tread Life

A wide tread surface, deepened grooves, and scratch resistant shoulder improve abrasion resistant for a longer tread life.



#### Water Drainage

The wide main grooves effectively drain water for a safe ride on wet roads.



## SIZES



	SIZE	PR	LI	SR	XL OR NOT	SIDEWALL	T.D (mm)	STANDARD RIM	S.W (mm)	O.D	UTQG	MAX LOAD (kg)	PRESSURE (kpa)	PLANT
12	165/70R12	--	77	T	--	RWL	9.0	5.00B	170	537	620/A/A	412	300	CP
13	165/70R13	--	79	H	--	BSW	7.5	5.00B	170	562	500/A/A	437	300	CP
	165/70R13LT	8PR	94/92	S	--	BSW	7.5	5.00B	170	562	500/A/A	670/630	450	CP
14	185/60R14	--	82	H	--	BSW	9.0	5 1/2J	189	578	500/A/A	475	300	CP
	185/65R14	--	86	H	--	BSW	9.0	5 1/2J	189	596	500/A/A	530	300	CP
	195/60R14	--	86	H	--	BSW	9.0	6J	201	590	500/A/A	530	300	CP
15	185/65R15	--	88	H	--	BSW	9.0	5 1/2J	189	621	500/A/A	560	300	CP
	195/50R15	--	82	V	--	BSW	9.0	6J	201	577	500/A/A	475	300	CP
	195/55R15	--	85	V	--	BSW	9.0	6J	201	595	500/A/A	515	300	CP
	195/60R15	--	88	V	--	BSW	9.0	6J	201	615	500/A/A	560	300	CP
	195/65R15	--	95	H	XL	BSW	9.0	6J	201	635	500/A/A	690	340	CP
	205/60R15	--	91	V	--	BSW	8.5	6J	209	627	500/A/A	615	300	CP
16	205/55R16	--	94	V	XL	BSW	9.0	6 1/2J	214	632	500/A/A	670	340	CP



# HS01

Specially designed UHP SUV tire.



## PATTERN DESIGN & FEATURES

### Product Design

### Product Performance



#### Safety

The center rib design provides greater traction for safer acceleration and braking.



#### Wear Resistance

The silicon compound tread makes the tire more wear resistance.



#### Comfortable Ride

The tread block pitch and built-in sipes reduce tire vibration and noise for a more comfortable ride.

## SIZES



	SIZE	PR	LI	SR	XL OR NOT	SIDEWALL	T.D (mm)	STANDARD RIM	S.W (mm)	O.D	UTQG	MAX LOAD (kg)	PRESSURE (kpa)	PLANT
17	235/55R17	--	103	W	XL	BSW	8.0	7 1/2J	245	690	280/AA/A	875	340	CP
18	225/55R18	--	102	W	XL	BSW	8.0	7J	233	705	280/AA/A	850	340	CP
	225/60R18	--	100	V	--	BSW	8.0	6 1/2J	228	727	280/AA/A	800	300	CP
	235/50R18	--	97	V	--	BSW	8.0	7 1/2J	245	693	280/AA/A	730	300	CP
	235/55R18	--	104	W	XL	BSW	8.0	7 1/2J	245	715	280/AA/A	900	340	CP
	235/60R18	--	107	W	XL	BSW	8.0	7J	240	739	280/AA/A	975	340	CP
	245/60R18	--	105	V	--	BSW	8.0	7J	248	751	280/AA/B	925	300	CP
	255/55R18	--	109	Y	XL	BSW	8.0	8J	265	737	280/AA/A	1030	340	CP
	255/60R18	--	112	V	XL	BSW	8.0	7 1/2J	260	763	280/AA/B	1120	340	CP
	265/60R18	--	110	V	--	BSW	8.0	8J	272	775	280/AA/B	1060	300	CP
	275/40R18	--	103	W	XL	BSW	8.0	9 1/2J	278	677	280/AA/A	875	340	CP
19	225/45R19	--	96	W	XL	BSW	8.0	7 1/2J	225	685	280/AA/A	710	340	CP
	235/55R19	--	101	W	--	BSW	8.0	7 1/2J	245	741	280/AA/A	825	300	CP
	245/55R19	--	103	V	--	BSW	8.0	7 1/2J	253	753	280/AA/A	875	300	CP
	255/55R19	--	111	Y	XL	BSW	8.0	8J	265	763	280/AA/A	1090	340	CP
	265/50R19	--	110	Y	XL	BSW	8.0	8 1/2J	277	749	280/AA/A	1060	340	CP
20	255/40R20	--	101	Y	XL	BSW	8.0	9J	260	712	280/AA/A	825	340	CP
	255/45R20	--	105	Y	XL	BSW	8.0	8 1/2J	255	738	280/AA/A	925	340	CP
	255/50R20	--	109	Y	XL	BSW	8.0	8J	265	764	280/AA/A	1030	340	CP
	255/55R20	--	110	Y	XL	BSW	8.0	8J	265	788	280/AA/A	1060	340	CP
	265/50R20	--	111	Y	XL	BSW	8.0	8 1/2J	277	774	280/AA/A	1090	340	CP
	275/35R20	--	102	W	XL	BSW	8.0	9 1/2J	278	700	280/AA/A	850	340	CP
	275/55R20	--	117	W	XL	BSW	8.0	8 1/2J	284	810	280/AA/A	1285	340	CP
	275/60R20	--	119	V	XL	BSW	8.0	8J	279	838	280/AA/B	1360	340	CP
	285/40R20	--	104	Y	--	BSW	8.0	10J	290	736	280/AA/A	900	300	CP
	285/50R20	--	116	W	XL	BSW	8.0	9J	297	794	280/AA/A	1250	340	CP
	295/35R20	--	105	Y	XL	BSW	8.0	10 1/2J	301	714	280/AA/A	925	340	CP
21	275/45R21	--	110	Y	XL	BSW	8.0	9J	273	781	280/AA/A	1060	340	CP
22	285/45R22	--	114	W	XL	BSW	8.0	9 1/2J	285	815	280/AA/A	1180	340	CP
	305/40R22	--	114	W	XL	BSW	8.0	11J	313	803	280/AA/A	1180	340	CP
	305/45R22	--	118	W	XL	BSW	8.0	10J	303	833	280/AA/A	1320	340	CP





# HS02

A UHP sports SUV product with an offset lateral arrangement of pattern blocks and fine groove design that effectively reduce noise and improve driving comfort.



## PATTERN DESIGN & FEATURES

Product Design	Product Performance
	<b>Safety</b> The wide center rib design offers great traction when accelerating and braking for a safe driving experience.
	<b>Wet Performance</b> Grooves and sipes improve grip and handling on wet surfaces while also reducing rolling resistance for improved fuel economy.
	<b>Driving Comfort</b> An optimized pitch and sipe pattern arrangement effectively reduces noise for a more comfortable ride.



## SIZES



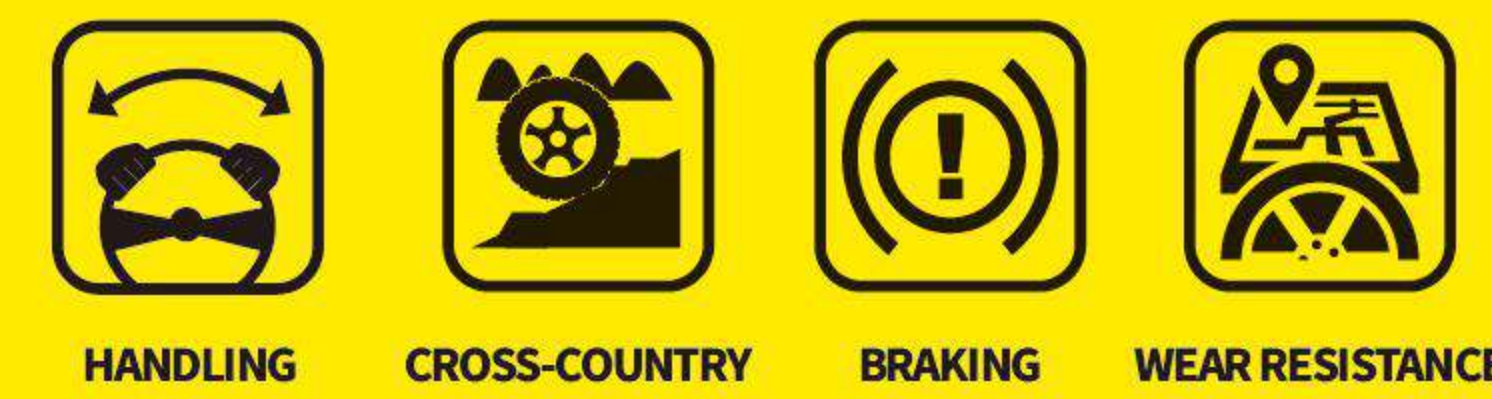
	SIZE	PR	LI	SR	XL OR NOT	SIDEWALL	T.D (mm)	STANDARD RIM	S.W (mm)	O.D	UTQG	MAX LOAD (kg)	PRESSURE (kpa)	PLANT	MARK
17	255/60R17	--	106	H	--	BSW	8.5	7 1/2J	260	738	500/A/A	950	300	CP	--
18	225/60R18	--	100	V	--	BSW	8.5	6 1/2J	228	727	500/A/A	800	300	CP	--
	235/50R18	--	97	V	--	BSW	8.0	7 1/2J	245	693	280/AA/A	730	300	CP	--
	235/50RF18	--	97	V	--	BSW	8.0	7 1/2J	245	693	280/A/A	730	300	CP	RFT
	255/55RF18	--	105	H	--	BSW	8.0	8J	265	737	280/A/A	925	300	CP	RFT
19	235/50R19	--	103	W	XL	BSW	8.5	7 1/2J	245	719	500/A/A	875	340	CP	--
	235/55R19	--	101	W	--	BSW	8.5	7 1/2J	245	741	500/A/A	825	300	CP	--
	245/55R19	--	103	V	--	BSW	8.0	7 1/2J	253	753	280/AA/A	875	300	CP	--
22	305/40R22	--	114	W	XL	BSW	8.0	11J	313	803	280/AA/A	1180	340	CP	--





# HT01

High performance SUV and light truck tire with excellent durability and handling efficiency.



## PATTERN DESIGN & FEATURES

Product Design	Product Performance
<p><b>Tread Formula</b> Special tread formula improves abrasion resistance and grip for better handling.</p>	
<p><b>Safety</b> Wide tread grooves and small cut block grooves ensure a safe ride by effectively draining water for better traction.</p>	
<p><b>Sidewall Design</b> The sidewall structure and ladder-like grooves on the shoulder allow the tire to conquer any challenge on both paved and non-paved roads.</p>	

## SIZES

	SIZE	PR	LI	SR	XL OR NOT	SIDEWALL	T.D (mm)	STANDARD RIM	S.W (mm)	O.D	UTQG	MAX LOAD (kg)	PRESSURE (kpa)	PLANT
15	205/70R15	--	96	S	--	BSW	9.8	6J	209	669	700/A/B	710	300	CP
	215/75R15	--	100	T	--	BSW	8.8	6J	216	703	700/A/B	800	300	CP
	225/70R15	--	100	S	--	BSW	9.0	6 1/2J	228	697	700/A/B	800	300	VP/CP
	235/75R15	--	105	S	--	BSW	9.8	6 1/2J	235	733	700/A/B	925	300	VP/CP
16	215/65R16	--	98	T	--	BSW	9.8	6 1/2J	221	686	700/A/B	750	300	VP/CP
	215/70R16	--	100	H	--	BSW	9.0	6 1/2J	221	708	700/A/B	800	300	CP
	215/70R16	--	100	T	--	BSW	9.0	6 1/2J	221	708	700/A/B	800	300	VP/CP
	225/70R16	--	103	S	--	BSW	9.8	6 1/2J	228	722	700/A/B	875	300	VP/CP
	225/75R16	--	104	S	--	BSW	8.8	6J	223	744	700/A/B	900	300	VP/CP
	235/70R16	--	106	H	--	BSW	8.8	7J	240	736	700/A/B	950	300	CP
	235/70R16	--	106	T	--	BSW	8.8	7J	240	736	700/A/B	950	300	VP/CP
	245/70R16	--	107	S	--	BSW	9.8	7J	248	750	700/A/B	975	300	VP/CP
	245/75R16	--	111	T	--	BSW	8.8	7J	248	774	700/A/B	1090	300	VP/CP
	255/70R16	--	111	T	--	BSW	8.8	7 1/2J	260	764	700/A/B	1090	300	VP/CP
	265/70R16	--	112	T	--	BSW	8.8	8J	272	778	700/A/B	1120	300	VP/CP
	265/75R16	--	116	T	--	BSW	8.8	7 1/2J	267	804	700/A/B	1250	300	VP/CP
17	LT215/85R16	10PR	115/112	S	--	BSW	8.5	6J	216	772	--	1215	550	8800
	LT225/75R16	10PR	115/112	S	--	BSW	10.5	6J	223	744	--	1215/1120	550	VP/CP
	LT235/85R16	10PR	120/116	S	--	BSW	10.5	6 1/2J	235	806	--	1400/1250	550	VP/CP
	LT245/75R16	10PR	120/116	Q	--	BSW	10.5	7J	248	774	--	1400/1250	550	VP/CP
	LT245/75R16	10PR	120/116	S	--	BSW	10.5	7J	248	774	--	1400/1250	550	8800
	LT265/75R16	10PR	123/120	Q	--	BSW	10.5	7 1/2J	267	804	--	1550/1400	550	VP/CP
17	LT265/75R16	10PR	123/120	S	--	BSW	10.5	7 1/2J	267	804	--	1550/1400	550	8800
	225/60R17	--	99	H	--	BSW	9.0	6 1/2J	228	702	700/A/A	775	300	VP/CP
	225/65R17	--	102	T	--	BSW	9.8	6 1/2J	228	724	700/A/B	850	300	CP



SIZES



	SIZE	PR	LI	SR	XL OR NOT	SIDEWALL	T.D (mm)	STANDARD RIM	S.W (mm)	O.D	UTQG	MAX LOAD (kg)	PRESSURE (kpa)	PLANT
17	225/65R17	--	102	S	--	BSW	9.8	6 1/2J	228	724	700/A/B	850	300	VP/CP
	235/65R17	--	104	S	--	BSW	9.8	7J	240	738	700/A/B	900	300	VP/CP
	235/65R17	--	104	T	--	BSW	9.8	7J	240	738	700/A/B	900	300	VP/CP
	235/75R17	--	109	S	--	BSW	8.8	6 1/2J	235	784	700/A/B	1030	300	VP/CP
	245/65R17	--	107	H	--	BSW	8.8	7J	248	750	700/A/B	975	300	CP
	245/65R17	--	107	T	--	BSW	8.8	7J	248	750	700/A/B	975	300	VP/CP
	245/70R17	--	110	T	--	BSW	8.8	7J	248	776	700/A/B	1060	300	VP/CP
	265/65R17	--	112	T	--	BSW	8.8	8J	272	776	700/A/B	1120	300	CP
	265/65R17	--	112	H	--	BSW	8.8	8J	272	776	700/A/B	1120	300	VP/CP
	265/70R17	--	115	T	--	BSW	8.8	8J	272	804	700/A/B	1215	300	VP/CP
	LT235/80R17	10PR	120/117	R	--	BSW	10.5	6 1/2J	235	808	--	1400/1285	550	VP/CP
	LT245/70R17	10PR	119/116	R	--	BSW	10.5	7J	248	776	--	1360/1250	550	VP/CP
	LT245/75R17	10PR	121/118	S	--	BSW	8.5	7J	248	806	--	1450	550	8800
	LT265/70R17	10PR	121/118	Q	--	BSW	10.5	8J	272	804	--	1450/1320	550	VP/CP
18	235/55R18	--	100	V	--	BSW	8.0	7 1/2J	245	715	700/A/A	800	300	CP
	235/55R18	--	100	T	--	BSW	8.0	7 1/2J	245	715	700/A/A	800	300	VP/CP
	235/60R18	--	107	V	XL	BSW	9.0	7J	240	739	700/A/B	975	340	8800
	235/65R18	--	106	T	--	BSW	9.0	7J	240	763	700/A/B	950	300	8800
	245/60R18	--	105	H	--	BSW	8.8	7J	248	751	700/A/B	925	300	VP/CP
	255/65R18	--	111	S	--	BSW	9.0	7 1/2J	260	789	700/A/B	1090	300	8800
	255/70R18	--	113	T	--	BSW	8.8	7 1/2J	260	815	700/A/B	1150	300	VP/CP
	265/60R18	--	110	H	--	BSW	8.8	8J	272	775	700/A/B	1060	300	CP
	265/60R18	--	110	T	--	BSW	8.8	8J	272	775	700/A/B	1060	300	VP/CP
	265/65R18	--	114	H	--	BSW	8.5	8J	272	801	700/A/B	1180	300	8800
	275/65R18	--	116	T	--	BSW	8.8	8J	279	815	700/A/B	1250	300	VP/CP

SIZES



	SIZE	PR	LI	SR	XL OR NOT	SIDEWALL	T.D (mm)	STANDARD RIM	S.W (mm)	O.D	UTQG	MAX LOAD (kg)	PRESSURE (kpa)	PLANT
19	225/55R19	--	99	V	--	BSW	8.0	7J	233	731	700/A/B	775	300	8800
	235/55R19	--	101	V	--	BSW	8.0	7 1/2J	245	741	700/A/B	825	300	8800
	245/55R19	--	103	H	--	BSW	8.0	7 1/2J	253	753	700/A/B	875	300	8800
20	255/50R20	--	105	H	--	BSW	8.0	8J	265	764	700/A/B	925	300	8800
	265/50R20	--	107	V	--	BSW	8.0	8 1/2J	277	774	700/A/B	975	300	8800
	275/45R20	--	110	H	XL	BSW	8.0	9J	273	756	700/A/A	1060	340	VP/CP
	275/55R20	--	113	H	--	BSW	8.0	8 1/2J	284	810	700/A/A	1150	300	VP/CP
	275/60R20	--	115	T	--	BSW	8.8	8J	279	838	700/A/B	1215	300	CP
	275/60R20	--	115	S	--	BSW	8.8	8J	279	838	700/A/B	1215	300	VP/CP



# HA01

An all-terrain off-road tire that suitable for various types of pickup trucks and SUVs, boasting strong off-road performance while also offering great on-road handling and driving comfort.



## PATTERN DESIGN & FEATURES

### Product Design

### Product Performance



#### Tread Formula

The tread compound is specially designed to improve grip and handling on wet and dry surfaces, while also improving tread life.



#### Noise Emission

Unique pattern design enhances driving stability and effectively reduces noise for a greater driving experience.



#### Sidewall Design

The sidewall is designed to withstand scratches and bumps common in off-road applications.

## SIZES

	SIZE	PR	LI	SR	XL OR NOT	SIDEWALL	T.D (mm)	STANDARD RIM	S.W (mm)	O.D	UTQG	MAX LOAD (kg)	PRESSURE (kpa)	PLANT
15	235/75R15	--	109	S	XL	OWL	8.8	6 1/2J	235	733	700/A/B	1030	340	CP
	31x10.50R15LT	6PR	109	S	--	OWL	13.0	8 1/2J	268	775	--	1030	350	CP
	LT215/75R15	6PR	100/97	S	--	OWL	12.0	6J	216	703	--	800/730	350	CP
	LT225/75R15	6PR	102/99	S	--	OWL	12.0	6J	223	719	--	850/775	350	CP
	LT235/75R15	6PR	104/101	S	--	OWL	12.0	6 1/2J	235	733	--	900/825	350	CP
16	215/70R16	--	100	S	--	OWL	8.8	6 1/2J	221	708	700/A/B	800	300	CP
	235/70R16	--	106	S	--	OWL	8.8	7J	240	736	700/A/B	950	300	CP
	235/70R16	--	106	T	--	OWL	8.8	7J	240	736	700/A/B	950	300	CP
	245/70R16	--	111	S	XL	OWL	8.8	7J	248	750	700/A/B	1090	340	CP
	245/70R16	--	107	S	--	OWL	8.8	7J	248	750	700/A/B	975	300	CP
	255/70R16	--	111	S	--	OWL	8.8	7 1/2J	260	764	700/A/B	1090	300	CP
	265/70R16	--	112	T	--	OWL	8.8	8J	272	778	700/A/B	1120	300	CP
	265/70R16	--	112	S	--	OWL	8.8	8J	272	778	700/A/B	1120	300	CP
	LT225/75R16	10PR	115/112	S	--	OWL	13.0	6J	223	744	--	1215/1120	550	CP
	LT235/70R16	6PR	104/101	T	--	OWL	12.0	7J	240	736	--	900/825	350	CP
	LT235/85R16	10PR	120/116	S	--	OWL	13.0	6 1/2J	235	806	--	1400/1250	550	CP
	LT245/70R16	6PR	106/103	T	--	OWL	12.0	7J	248	750	--	950/875	350	CP
LT245/75R16	10PR	120/116	Q	--	OWL	13.0	7J	248	774	--	1400/1250	550	CP	
LT265/70R16	8PR	117/114	T	--	OWL	13.0	8J	272	778	--	1285/1180	450	CP	
LT265/70R16	8PR	117/114	S	--	OWL	13.0	8J	272	778	--	1285/1180	450	CP	
LT265/75R16	10PR	123/120	Q	--	OWL	13.0	7 1/2J	267	804	--	1550/1400	550	CP	
LT285/75R16	10PR	126/123	R	--	OWL	10.5	8J	286	834	--	1700/1550	550	CP	
17	225/65R17	--	102	T	--	OWL	8.8	6 1/2J	228	724	700/A/B	850	300	CP
	235/65R17	--	104	T	--	OWL	8.8	7J	240	738	700/A/B	900	300	CP
	245/65R17	--	107	S	--	OWL	8.8	7J	248	750	700/A/B	975	300	CP
	245/65R17	--	107	T	--	OWL	8.8	7J	248	750	700/A/B	975	300	CP
	245/70R17	--	110	H	--	OWL	8.8	7J	248	776	700/A/B	1060	300	CP
	265/70R17	--	115	T	--	OWL	10.5	8J	272	804	700/A/B	1215	300	CP
	285/65R17	--	116	T	--	OWL	8.8	8 1/2J	292	802	700/A/B	1250	300	CP
	285/65R17	--	116	H	--	OWL	8.8	8 1/2J	292	802	700/A/B	1250	300	CP
	LT235/80R17	10PR	120/117	R	--	OWL	10.5	6 1/2J	235	808	--	1400/1285	550	CP
	LT245/70R17	10PR	119/116	R	--	OWL	10.5	7J	248	776	--	1360/1250	550	CP
	LT245/75R17	10PR	121/118	S	--	OWL	10.5	7J	248	800	--	1450/1320	550	CP
	LT265/65R17	10PR	120/117	R	--	OWL	10.5	8J	272	776	--	1400/1285	550	CP
LT265/70R17	10PR	121/118	Q	--	OWL	10.5	8J	272	804	--	1450/1320	550	CP	
LT285/70R17	8PR	121/118	S	--	OWL	10.5	8 1/2J	292	832	--	1450/1320	450	CP	
LT285/70R17	10PR	121/118	S	--	OWL	10.5	8 1/2J	292	832	--	1450/1320	550	CP	
18	245/60R18	--	105	T	--	OWL	8.8	7J	248	751	700/A/B	925	300	CP
	255/65R18	--	111	S	--	OWL	8.8	7 1/2J	260	789	700/A/B	1090	300	CP
	265/60R18	--	110	T	--	OWL	8.8	8J	272	775	700/A/B	1060	300	CP
	275/65R18	--	116	T	--	OWL	8.8	8J	279	815	700/A/B	1250	300	CP
	LT275/65R18	10PR	123/120	S	--	OWL	10.5	8J	279	815	--	1550/1400	550	CP
20	265/50R20	--	111	T	XL	BSW	8.8	8 1/2J	277	774	700/A/A	1090	340	CP
	265/50R20	--	111	T	XL	OWL	8.8	8 1/2J	277	774	700/A/A	1090	340	CP
	275/55R20	--	117	H	XL	OWL	8.0	8 1/2J	284	810	700/A/A	1285	340	CP
	275/55R20	--	117	S	XL	OWL	8.0	8 1/2J	284	810	700/A/A	1285	340	CP
	LT275/65R20	10PR	126/123	S	--	OWL	10.5	8J	279	866	--	1700/1550	550	CP



# HA11

An all-terrain off-road tire that suitable for various types of pickup trucks and SUVs, boasting strong off-road performance while also offering great on-road handling and driving comfort. All HA11 LT sizes are 3PMS certified to ensure for safer driving in extreme winter weather conditions.



## PATTERN DESIGN & FEATURES

### Product Design

### Product Performance



#### Tread Formula

Special composite materials make up the tire tread to provide improved grip and excellent control on wet and dry surfaces while also increasing the tire's usable life.



#### Tread Pattern

The unique pattern design enhances driving stability and effectively reduces noise for a greater driving experience.



#### Sidewall Design

The sidewall is designed to withstand scratches and bumps common in off-road applications.

## SIZES



	SIZE	PR	LI	SR	XL OR NOT	SIDEWALL	T.D (mm)	STANDARD RIM	S.W (mm)	O.D	UTQG	MAX LOAD (kg)	PRESSURE (kpa)	PLANT
15	235/75R15	--	109	S	XL	OWL	10.5	61/2J	235	733	500/A/B	1030	340	VP
	31x10.50R15LT 6PR		109	S	--	OWL	13.0	81/2J	268	775	--	1030	350	VP
	LT235/75R15	8PR	110/107	S	--	OWL	13.0	61/2J	235	733	--	1060	450	VP
16	235/70R16	--	106	S	--	OWL	10.5	7J	240	736	500/A/B	950	300	VP
	245/75R16	--	111	S	--	OWL	10.5	7J	248	774	500/A/B	1090	300	VP
	265/70R16	--	112	T	--	OWL	10.5	8J	272	778	500/A/B	1120	300	VP
	265/75R16	--	116	S	--	OWL	10.5	71/2J	267	804	500/A/B	1250	300	VP
	LT225/75R16	10PR	115/112	S	--	BSW	13.0	6J	223	744	--	1215/1120	550	VP
	LT235/85R16	10PR	120/116	S	--	BSW	13.0	61/2J	235	806	--	1380/1260	550	VP
	LT245/75R16	10PR	120/116	S	--	BSW	13.0	7J	248	774	--	1380/1260	550	VP
17	LT265/75R16	10PR	123/120	S	--	OWL	13.0	71/2J	267	804	--	1550/1400	550	VP
	LT285/75R16	10PR	126/123	S	--	OWL	13.0	8J	286	834	--	1700/1550	550	VP
	245/65R17	--	107	S	--	OWL	10.5	7J	248	750	500/A/B	975	300	VP
	255/70R17	--	112	S	--	OWL	10.5	71/2J	260	790	500/A/B	1120	300	VP
	265/65R17	--	112	S	--	OWL	10.5	8J	272	776	500/A/B	1120	300	VP
	265/70R17	--	115	S	--	OWL	10.5	8J	272	804	500/A/B	1215	300	VP
	LT235/80R17	10PR	120/117	R	--	OWL	13.0	61/2J	235		--	1400/1285	550	VP
	LT245/70R17	10PR	119/116	S	--	OWL	13.0	7J	248	776	--	1360/1250	550	VP
	LT245/75R17	10PR	121/118	S	--	OWL	13.0	7J	248	800	--	1450/1320	550	VP
	LT265/70R17	10PR	121/118	S	--	OWL	13.0	8J	272	804	--	1450/1320	550	VP
18	LT285/70R17	10PR	121/118	S	--	OWL	13.0	81/2J	292	832	--	1450/1320	550	VP
	275/65R18	--	116	T	--	OWL	10.5	8J	279	815	500/A/B	1250	300	VP
	LT265/70R18	10PR	124/121	R	--	BSW	13.0	8J	272	829	--	1600/1450	550	VP
	LT275/65R18	10PR	123/120	S	--	OWL	13.0	8J	279	815	--	1550/1400	550	VP
	LT275/70R18	10PR	125/122	R	--	OWL	13.0	8J	279	843	--	1650/1500	550	VP
20	275/55R20	--	117	T	XL	BSW	10.5	81/2J	284	810	500/A/B	1285	340	VP
	275/60R20	--	115	T	--	BSW	10.5	8J	279	838	500/A/B	1215	300	VP
	LT275/65R20	10PR	126/123	S	--	BSW	13.0	8J	279	866	--	1700/1550	550	VP



# HM01

The HM01 is specially designed for cross-country enthusiasts.



## PATTERN DESIGN & FEATURES

Product Design	Product Performance
	<p><b>Strengthened Carcass</b></p> <p>The three ply carcass makes this tire extremely strong and capable of handling strong impacts.</p>
	<p><b>Shoulder Blocks</b></p> <p>The large shoulder block design vastly enhances the handling performance on muddy and rocky roads for improved driving quality.</p>
	<p><b>Sidewall Design</b></p> <p>The shield-like design extending up from the sidewall improves traction and further protects the sidewall from damage.</p>
	<p><b>Shoulder Grooves</b></p> <p>Shoulder grooves have been widened and deepened to effectively increase the tire's self-cleaning capabilities and offer improved grip on rugged and rocky roads.</p>



## SIZES

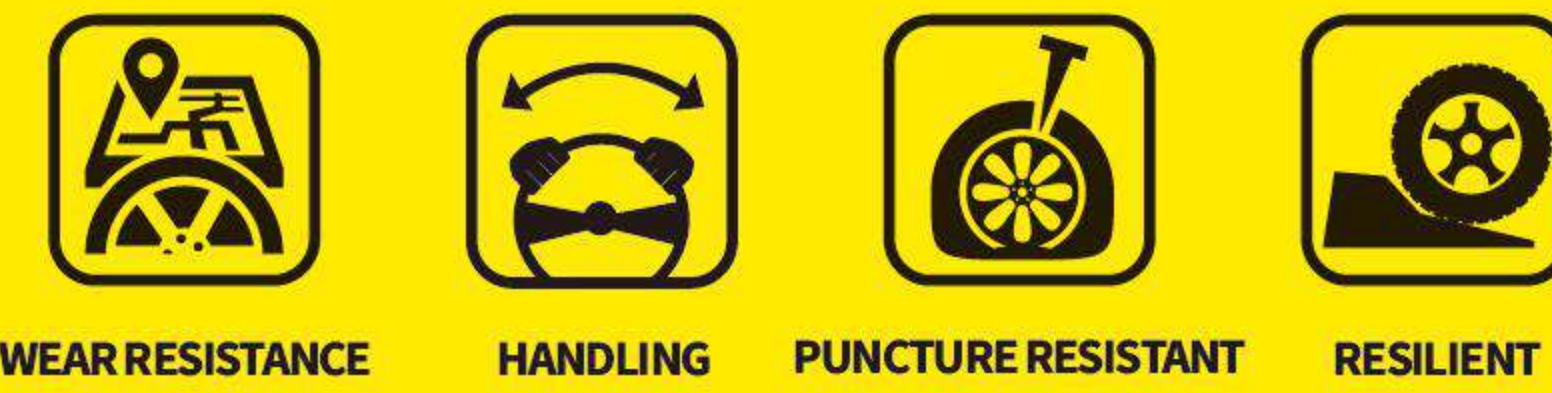


SIZE	PR	LI	SR	XL OR NOT	SIDEWALL	T.D (mm)	STANDARD RIM	S.W (mm)	O.D	UTQG	MAX LOAD (kg)	PRESSURE (kpa)	PLANT
15 30x9.50R15LT	6PR	104	Q	--	OWL	15.3	7 1/2J	240	756	--	900	350	CP
31x10.50R15LT	6PR	109	Q	--	OWL	15.3	8 1/2J	268	781	--	1030	350	CP
33x12.50R15LT	6PR	108	Q	--	OWL	15.3	10J	318	832	--	1000	250	CP
35x12.50R15LT	6PR	113	Q	--	OWL	15.3	10J	318	883	--	1150	250	CP
LT235/75R15	6PR	104/101	Q	--	OWL	15.3	6 1/2J	235	739	--	900/825	350	CP
16 LT235/85R16	10PR	120/116	Q	--	OWL	15.3	6 1/2J	235	812	--	1380/1260	550	CP
LT245/75R16	10PR	120/116	Q	--	OWL	15.3	7J	248	780	--	1380/1260	550	CP
LT265/75R16	10PR	123/120	Q	--	OWL	15.3	7 1/2J	267	810	--	1550/1400	550	CP
17 33x12.50R17LT	8PR	114	Q	--	OWL	16.3	10J	318	832	--	1180	350	CP
35x12.50R17LT	10PR	121	Q	--	OWL	16.3	10J	318	883	--	1450	450	CP
LT265/70R17	10PR	121/118	Q	--	OWL	15.5	8J	272	810	--	1450/1320	550	CP
LT285/70R17	10PR	121/118	Q	--	OWL	15.5	8 1/2J	292	838	--	1450/1320	550	CP
18 33x12.50R18LT	10PR	118	Q	--	BSW	16.3	10J	318	832	--	1320	450	CP
35x12.50R18LT	10PR	123	Q	--	BSW	16.7	10J	318	883	--	1550	450	CP
20 33x12.50R20LT	10PR	114	Q	--	BSW	16.3	10J	318	832	--	1180	450	CP
35x12.50R20LT	10PR	121	Q	--	BSW	16.3	10J	318	883	--	1450	450	CP
LT305/55R20	10PR	121/118	Q	--	BSW	16.3	9 1/2J	316	850	--	1450/1320	450	CP



# HL01

The HL01 is specially designed to provide excellent performance on wet roads and offers increased load bearing capabilities for light truck vehicles.



WEAR RESISTANCE    HANDLING    PUNCTURE RESISTANT    RESILIENT

## PATTERN DESIGN & FEATURES

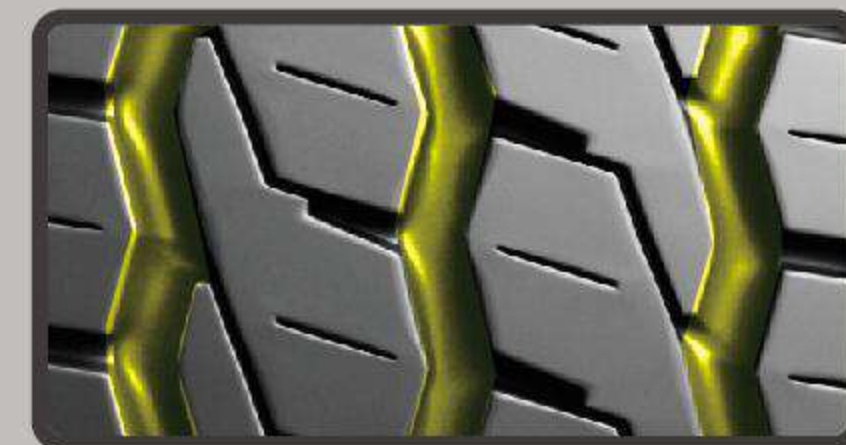
### Product Design

### Product Performance



#### Commercial Utilization

The applied tread compounds and optimized pattern design provide great load bearing capabilities.



#### Wet Performance

Wide, zigzagged main grooves effectively siphon water for excellent driving performance on wet roads.



#### Tread Life

The unique tread compounds increase the tire's wear resistance and deep grooves provide a longer service life.



## SIZES

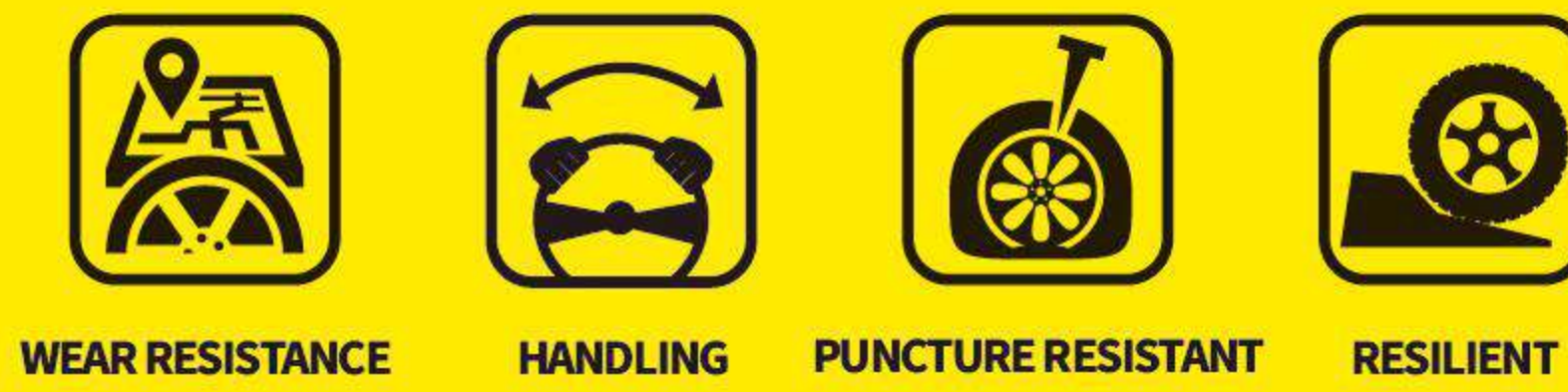


	SIZE	PR	LI	SR	XL OR NOT	SIDEWALL	T.D (mm)	STANDARD RIM	S.W (mm)	O.D	UTQG	MAX LOAD (kg)	PRESSURE (kpa)	PLANT
14	175/70R14C	6PR	95/93	R	--	BSW	8.0	5J	177	602	--	690/650	375	CP
	185R14C	8PR	102/100	Q	--	BSW	10.5	5 1/2J	188	650	--	850/800	450	CP
	195R14C	8PR	106/104	Q	--	BSW	9.0	5 1/2J	198	666	--	950/900	450	CP
15	185R15C	8PR	103/102	R	--	BSW	10.5	5 1/2J	188	674	--	875/850	450	CP
	195R15C	8PR	106/104	R	--	BSW	10.5	5 1/2J	198	690	--	950/900	450	CP



# HLO2

Long-running tire with flexible handling designed specifically for light trucks.



WEAR RESISTANCE HANDLING PUNCTURE RESISTANT RESILIENT

## PATTERN DESIGN & FEATURES

### Product Design

### Product Performance



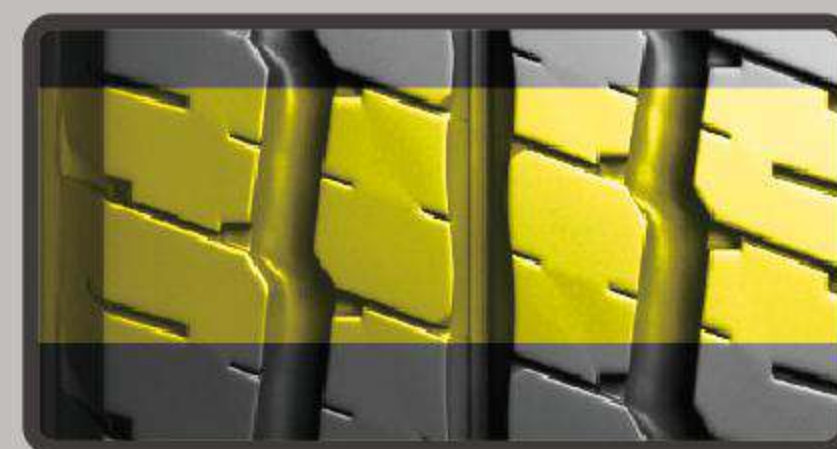
#### Carrying Capacity

This tire is designed with a reinforced carcass to improve its load bearing capability.



#### Wet Performance

Three main grooves effectively siphon water to improve grip on wet roads.



#### Tread Life

The tread composition and pattern design is optimized to improve wear resistance for a longer service life.

## SIZES



	SIZE	PR	LI	SR	XL OR NOT	SIDEWALL	T.D (mm)	STANDARD RIM	S.W (mm)	O.D	UTQG	MAX LOAD (kg)	PRESSURE (kpa)	PLANT
15	6.50R15LT	10PR	106/101	N	--	BSW	10.0	5.50F	185	730	--	950/825	560	CP
16	6.50R16LT	10PR	107/102	N	--	BSW	10.5	5.50F	185	750	--	975/850	560	CP
	7.00R16LT	12PR	115/110	N	--	BSW	10.5	5.50F	200	775	--	1215/1060	670	CP



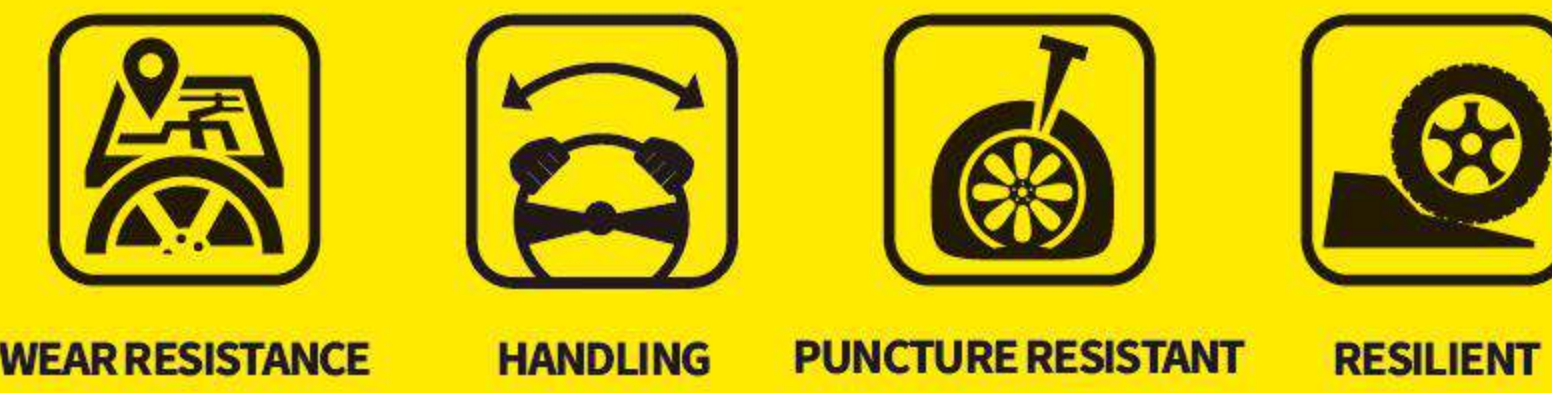




SIZES

# HLO3

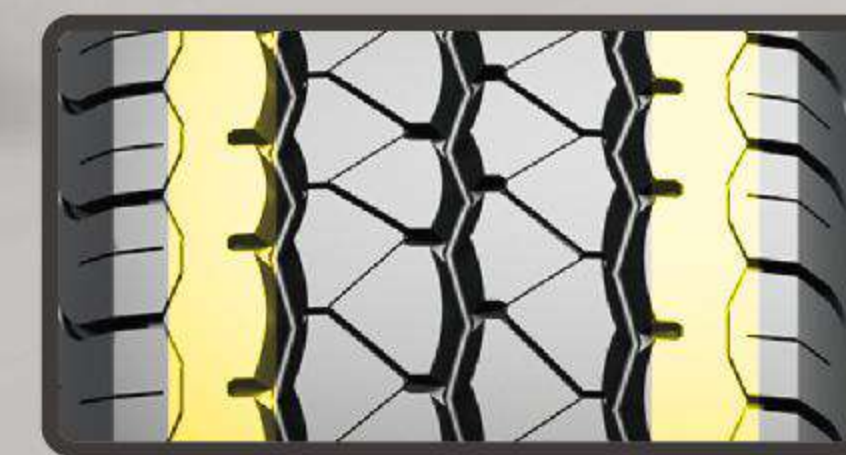
Specially designed pattern for commercial light trucks, minivans, and minibuses that offers outstanding handling on wet surfaces as well as excellent high speed durability.



**PATTERN DESIGN & FEATURES**

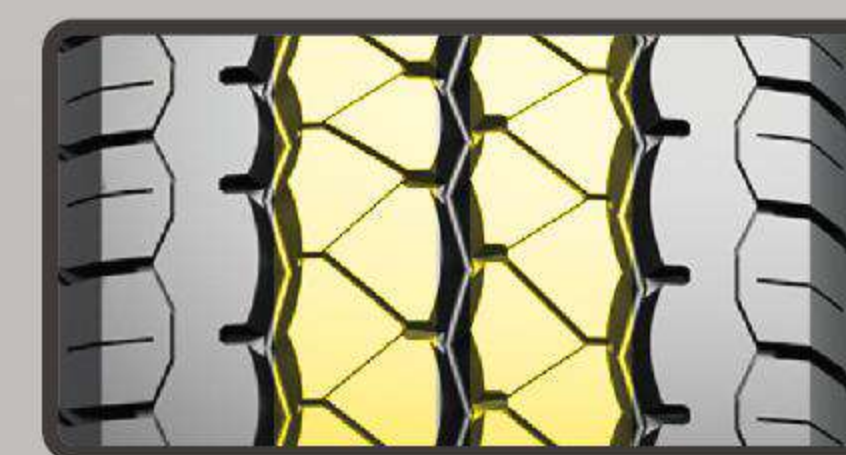
**Product Design**

**Product Performance**



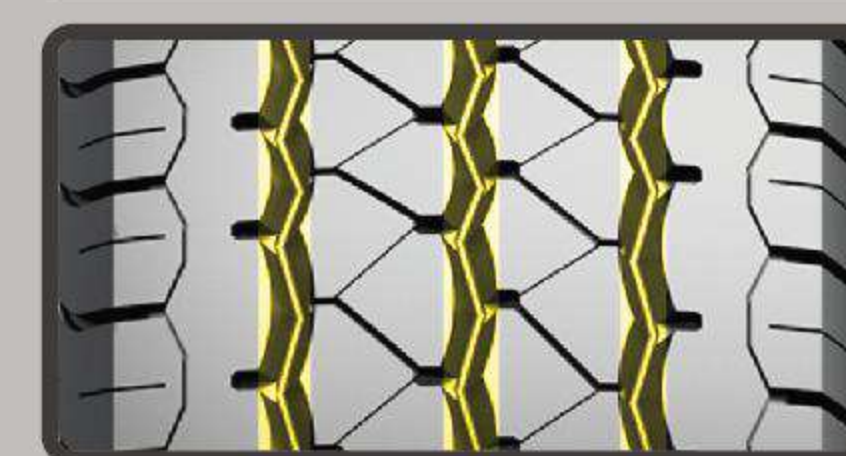
**Driving Comfort**

The tread has a varied pitch design created to reduce noise and allow for a better driving experience.



**Tread Pattern**

Original pattern design ensures excellent performance and greater driving comfort on wet and dry roads.



**Tread Design**

Wider and deeper grooves increase wear resistance, efficiently drain water, and provide greater handling and stability.



	SIZE	PR	LI	SR	XL OR NOT	SIDEWALL	T.D (mm)	STANDARD RIM	S.W (mm)	O.D	UTQG	MAX LOAD (kg)	PRESSURE (kpa)	PLANT	
12	145R12C	8PR	86/84	P	--	BSW	8.0	4.00B	145	537	--	530/500	450	CP	
	155R12C	8PR	88/86	P	--	BSW	8.0	4.50B	157	550	--	560/530	450	CP	
13	155R13C	6PR	85/83	Q	--	BSW	8.0	4.50B	157	578	--	515/487	350	CP	
	165/70R13C	6PR	88/86	Q	--	BSW	8.0	5.00B	170	562	--	560/530	375	CP	
	165R13C	8PR	94/93	S	--	BSW	7.6	4.50B	167	596	--	670/650	450	CP	
	175R13C	8PR	97/95	S	--	BSW	8.0	5.00B	177	610	--	730/690	450	CP	
	175/65R14C	6PR	90/88	T	--	BSW	8.0	5J	177	584	--	600/560	375	CP	
14	175/70R14C	6PR	95/93	Q	--	BSW	8.0	5J	177	602	--	690/650	375	CP	
	175R14C	8PR	99/98	Q	--	BSW	9.0	5J	178	634	--	775/750	450	CP	
	185R14C	8PR	102/100	Q	--	BSW	9.0	5 1/2J	188	650	--	850/800	450	CP	
	195R14C	8PR	106/104	Q	--	BSW	9.0	5 1/2J	198	666	--	950/900	450	CP	
	195R14C	8PR	106/104	Q	--	WR	9.0	5 1/2J	198	666	--	950/900	450	CP	
	205/75R14C	8PR	109/107	Q	--	WR	9.0	5 1/2J	203	664	--	1030/975	475	CP	
	205R14C	8PR	109/107	R	--	BSW	9.0	6J	208	686	--	1030/975	450	CP	
	205R14C	10PR	112/110	R	--	BSW	9.0	6J	208	686	--	1120/1060	550	CP	
	15	185R15C	8PR	103/102	R	--	BSW	9.4	5 1/2J	188	674	--	875/850	450	CP
		195/70R15C	8PR	104/102	R	--	BSW	10.0	6J	201	655	--	900/850	450	CP
195R15C		8PR	106/104	R	--	BSW	9.0	5 1/2J	198	690	--	950/900	450	CP	
195R15C		8PR	106/104	R	--	WR	9.0	5 1/2J	198	690	--	950/900	450	CP	
205/65R15C		6PR	102/100	R	--	BSW	9.0	6J	209	647	--	850/800	375	CP	
205/70R15C		8PR	106/104	R	--	BSW	9.0	6J	209	669	--	950/900	450	CP	
205/70R15C		10PR	109/107	R	--	BSW	9.0	6J	209	669	--	1030/975	550	CP	
215/70R15C		8PR	109/107	S	--	BSW	10.0	6 1/2J	221	683	--	1030/975	450	CP	
215/70R15C		10PR	113/111	R	--	BSW	10.0	6 1/2J	221	683	--	1150/1090	525	CP	
215R15C		8PR	109/107	R	--	WR	10.0	6J	218	725	--	1030/975	450	CP	
225/70R15C		8PR	112/110	R	--	BSW	9.0	6 1/2J	228	697	--	1120/1060	450	CP	
16		175R16C	8PR	101/99	R	--	BSW	9.0	5J	178	684	--	825/775	450	CP
	185/75R16C	8PR	104/102	R	--	BSW	9.0	5J	184	684	--	900/850	475	CP	
	195/60R16C	6PR	99/97	T	--	BSW	9.0	6J	201	640	--	775/730	375	CP	
	195/65R16C	8PR	104/102	R	--	BSW	9.4	6J	201	660	--	900/850	475	CP	
	195/75R16C	8PR	107/105	R	--	BSW	10.0	5 1/2J	196	698	--	975/925	475	CP	
	195/75R16C	10PR	110/108	R	--	BSW	10.0	5 1/2J	196	698	--	1060/1000	525	CP	
	205/65R16C	8PR	107/105	R	--	BSW	9.0	6J	209	672	--	975/925	475	CP	
	205/75R16C	8PR	110/108	R	--	BSW	9.0	5 1/2J	203	714	--	1060/1000	475	CP	
	205/75R16C	10PR	113/111	R	--	BSW	9.0	5 1/2J	203	714	--	1150/1090	525	CP	
	205R16C	8PR	110/108	R	--	BSW	9.0	6J	208	736	--	1060/1000	450	CP	
	215/60R16C	8PR	108/106	T	--	BSW	9.0	6 1/2J	221	664	--	1000/950	475	CP	
	215/65R16C	8PR	109/107	R	--	BSW	9.0	6 1/2J	221	686	--	1030/975	475	CP	
	215/70R16C	6PR	108/106	Q	--	BSW	9.0	6 1/2J	221	708	--	1000/950	375	CP	
	215/75R16C	10PR	116/114	R	--	BSW	10.5	6J	216	728	--	1250/1180	525	CP	
17	225/65R16C	8PR	112/110	R	--	BSW	9.0	6 1/2J	228	698	--	1120/1060	475	CP	
	225/75R16C	10PR	121/120	R	--	BSW	9.0	6J	223	744	--	1450/1400	575	CP	
	235/65R16C	8PR	115/113	R	--	BSW	9.0	7J	240	712	--	1215/1150	475	CP	
	225/70R17C	6PR	112/110	R	--	BSW	9.0	6 1/2J	228	748	--	1120/1060	375	CP	



# HST01

Special trailer-hauling design with great performance.



SNOW GRIP



HIGH DURABILITY

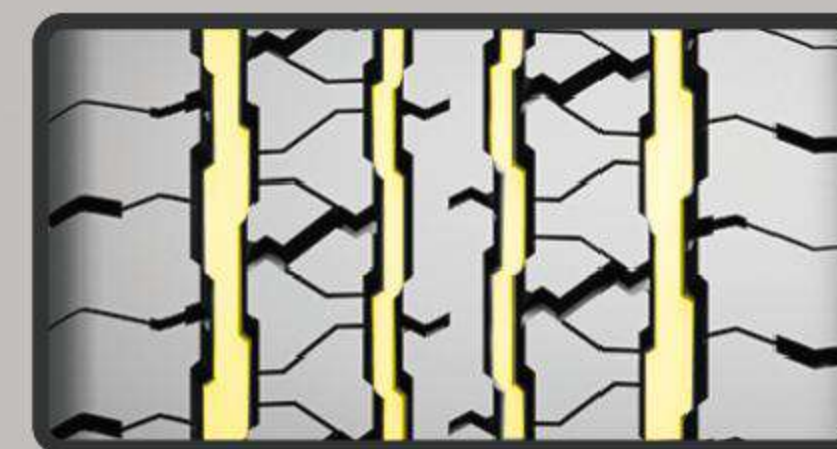


LONG MILEAGE

## PATTERN DESIGN & FEATURES

### Product Design

### Product Performance



#### Stone Retention

The zigzag design of the tread grooves reduces stone retention and improves overall driving adaptability on all road conditions.



#### Tread Life

The groove and sipe design improves tire traction and resistance to heat buildup to effectively extend tire tread life.



#### Rib Design

Overall tread rigidity is improved to reduce tire deformation and reduce heat build-up.



## SIZES



	SIZE	PR	LI	SR	XL OR NOT	SIDEWALL	T.D (mm)	STANDARD RIM	S.W (mm)	O.D	UTQG	MAX LOAD (kg)	PRESSURE (kpa)	PLANT
13	ST175/80R13	6PR	91/87	L	--	BSW	7.6	5J	177	610	--	615/545	350	CP
14	ST205/75R14	6PR	100/96	L	--	BSW	7.8	5 1/2J	203	664	--	800/710	350	CP
	ST215/75R14	6PR	102/98	L	--	BSW	7.8	6J	216	678	--	850/750	350	CP
15	ST205/75R15	8PR	107/102	L	--	BSW	7.8	5 1/2J	203	689	--	975/850	450	CP
	ST225/75R15	10PR	117/112	L	--	BSW	7.8	6J	223	719	--	1285/1120	550	CP
16	ST235/80R16	10PR	124/120	L	--	BSW	8.0	6 1/2J	235	782	--	1600/1400	550	CP
	ST235/85R16	10PR	125/121	L	--	BSW	8.0	6 1/2J	235	806	--	1650/1450	550	CP
	ST235/85R16	12PR	128/124	L	--	BSW	8.0	6 1/2J	235	806	--	1800/1600	660	CP





# HH4S

Specially designed all season tire.



## PATTERN DESIGN & FEATURES

### Product Design

### Product Performance



#### Noise Emissions

Tread pitch is designed to effectively reduce noise emissions for a quiet driving experience.



#### All-Season Versatility

Tread and groove design ensures handling, grip, and stability for all seasons.



#### Inner Tread

Improved handling on wet and snowy roads while also improving grip and braking efficiency.



#### Outer Tread

Improved handling and stability on dry roads.



## SIZES

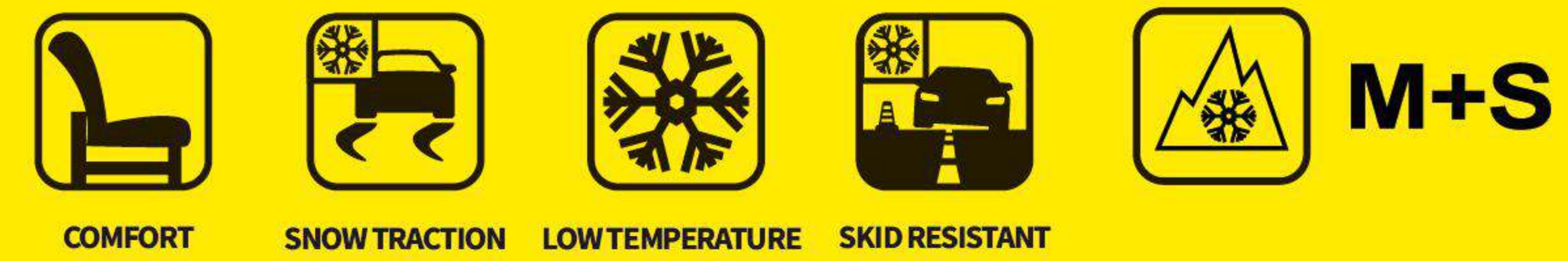


	SIZE	PR	LI	SR	XL OR NOT	SIDEWALL	T.D (mm)	STANDARD RIM	S.W (mm)	O.D	UTQG	MAX LOAD (kg)	PRESSURE (kpa)	PLANT
13	155/70R13	--	75	T	--	BSW	8	4.50B	157	548	300/A/A	387	300	VP/CP
	155/80R13	--	79	T	--	BSW	8	4.50B	157	578	300/A/A	437	300	VP/CP
14	155/65R14	--	75	T	--	BSW	8	4 1/2J	157	558	300/A/A	387	300	CP
	165/60R14	--	79	H	XL	BSW	8	5J	170	554	300/A/A	437	340	CP
	165/65R14	--	79	T	--	BSW	8	5J	170	570	300/A/A	437	300	CP
	165/70R14	--	85	T	XL	BSW	8	5J	170	588	300/A/A	515	340	VP/CP
	175/65R14	--	82	T	--	BSW	8.5	5J	177	584	300/A/A	475	300	VP/CP
	175/70R14	--	84	T	--	BSW	8.5	5J	177	602	300/A/A	500	300	CP
14	175/70R14	--	88	T	XL	BSW	8.5	5J	177	602	300/A/A	560	340	CP
	185/60R14	--	82	T	--	BSW	8.5	5 1/2J	189	578	300/A/A	475	300	CP
	185/65R14	--	86	T	--	BSW	8.5	5 1/2J	189	596	300/A/A	530	300	CP
	175/65R15	--	84	H	--	BSW	8.5	5J	177	609	300/A/A	500	300	CP
15	185/55R15	--	82	H	--	BSW	8.5	6J	194	585	300/A/A	475	300	CP
	185/60R15	--	88	H	XL	BSW	8.5	5 1/2J	189	603	300/A/A	560	340	VP/CP
	185/65R15	--	92	T	XL	BSW	8.5	5 1/2J	189	621	300/A/A	630	340	VP/CP
	185/65R15	--	88	H	--	BSW	8.5	5 1/2J	189	621	300/A/A	560	300	VP/CP
	195/50R15	--	82	H	--	BSW	8.5	6J	201	577	300/A/A	475	300	CP
	195/55R15	--	85	H	--	BSW	8.5	6J	201	595	300/A/A	515	300	VP/CP
	195/60R15	--	88	H	--	BSW	8.5	6J	201	615	300/A/A	560	300	VP/CP
	195/65R15	--	91	H	--	BSW	8.5	6J	201	635	300/A/A	615	300	CP
	195/55R16	--	87	V	--	BSW	8.5	6J	201	620	300/A/A	545	300	CP
	205/45R16	--	87	V	XL	BSW	8.5	7J	206	590	300/A/A	545	340	CP
16	205/55R16	--	94	H	XL	BSW	8.5	6 1/2J	214	632	300/A/A	670	340	CP
	205/55R16	--	94	V	XL	BSW	8.5	6 1/2J	214	632	300/A/A	670	340	CP
	205/60R16	--	96	V	XL	BSW	8.5	6J	209	652	300/A/A	710	340	CP
	215/55R16	--	97	V	XL	BSW	8.5	7J	226	642	300/A/A	730	340	CP
	215/60R16	--	99	V	XL	BSW	8.5	6 1/2J	221	664	300/A/A	775	340	CP
	225/55R16	--	99	V	XL	BSW	8.5	7J	233	654	300/A/A	775	340	CP
	205/50R17	--	93	V	XL	BSW	8.5	6 1/2J	214	638	300/A/A	650	340	CP
	225/45R17	--	94	V	XL	BSW	8.5	7 1/2J	225	634	300/A/A	670	340	CP
17	225/50R17	--	98	V	XL	BSW	8.5	7J	233	658	300/A/A	750	340	CP
	225/65R17	--	102	T	--	BSW	9	6 1/2J	228	724	300/A/A	850	300	CP



# HW01

The special tread compound improves traction performance on snow and ice.



## PATTERN DESIGN & FEATURES

### Product Design

### Product Performance



#### Handling

Wide tread and grooves improve handling on both ice and snow.



#### Groove Design

The sawtooth design on the edge of the grooves provides greater traction on snow and ice.



#### Winter Safety

V-shaped tread effectively expels water while the tread's winter compound maintains flexibility and improves wear resistance.

## SIZES

	SIZE	PR	LI	SR	XL OR NOT	SIDEWALL	T.D (mm)	STANDARD RIM	S.W (mm)	O.D	UTQG	MAX LOAD (kg)	PRESSURE (kpa)	PLANT
13	155/65R13	--	73	T	--	BSW	8.7	4.50B	157	532	--	365	300	CP
	155/70R13	--	75	T	--	BSW	8.7	4.50B	157	548	--	387	300	CP
	155/80R13	--	79	T	--	BSW	8.0	4.50B	157	578	--	437	300	CP
	165/70R13	--	83	T	XL	BSW	8.7	5.00B	170	562	--	487	340	CP
	175/70R13	--	86	T	XL	BSW	8.7	5.00B	177	576	--	530	340	CP
14	165/65R14	--	79	T	--	BSW	8.7	5J	170	570	--	437	300	CP
	165/70R14	--	85	T	XL	BSW	8.7	5J	170	588	--	515	340	CP
	175/65R14	--	86	T	XL	BSW	8.7	5J	177	584	--	530	340	CP
	175/70R14	--	88	T	XL	BSW	8.7	5J	177	602	--	560	340	CP
	185/60R14	--	82	T	--	BSW	8.7	5 1/2J	189	578	--	475	300	CP
	185/65R14	--	86	T	--	BSW	8.7	5 1/2J	189	596	--	530	300	CP
	185/70R14	--	92	T	XL	BSW	8.7	5 1/2J	189	616	--	630	340	CP
	195/60R14	--	86	T	--	BSW	8.7	6J	201	590	--	530	300	CP
	205/70R14	--	98	T	XL	BSW	8.7	6J	209	644	--	750	340	CP
	15	175/65R15	--	88	H	XL	BSW	8.7	5J	177	609	--	560	340
185/55R15		--	86	H	XL	BSW	8.7	6J	194	585	--	530	340	CP
185/60R15		--	88	H	XL	BSW	9.2	5 1/2J	189	603	--	560	340	CP
185/65R15		--	88	T	--	BSW	9.2	5 1/2J	189	621	--	560	300	CP
195/55R15		--	89	H	XL	BSW	9.2	6J	201	595	--	580	340	CP
195/60R15		--	88	T	--	BSW	9.2	6J	201	615	--	560	300	CP
195/65R15		--	95	T	XL	BSW	9.2	6J	201	635	--	690	340	CP
205/60R15		--	91	H	--	BSW	9.2	6J	209	627	--	615	300	CP
205/65R15		--	94	H	--	BSW	9.2	6J	209	647	--	670	300	CP
205/70R15		--	96	T	--	BSW	9.2	6J	209	669	--	710	300	CP
16	195/45R16	--	84	H	XL	BSW	9.2	6 1/2J	195	582	--	500	340	CP
	195/55R16	--	87	H	--	BSW	9.2	6J	201	620	--	545	300	CP
	205/55R16	--	94	H	XL	BSW	9.2	6 1/2J	214	632	--	670	340	CP
	205/60R16	--	92	H	--	BSW	9.2	6J	209	652	--	630	300	CP
	215/55R16	--	97	H	XL	BSW	9.2	7J	226	642	--	730	340	CP
	215/60R16	--	99	H	XL	BSW	9.2	6 1/2J	221	664	--	775	340	CP
	215/65R16	--	98	H	--	BSW	9.2	6 1/2J	221	686	--	750	300	CP
	225/55R16	--	99	H	XL	BSW	9.2	7J	233	654	--	775	340	CP
	225/60R16	--	98	H	--	BSW	9.2	6 1/2J	228	676	--	750	300	CP
	17	205/45R17	--	88	H	XL	BSW	9.2	7J	206	616	--	560	340
205/50R17		--	93	V	XL	BSW	8.5	6 1/2J	214	638	--	650	340	CP
215/45R17		--	87	H	--	BSW	9.2	7J	213	626	--	545	300	CP
215/55R17		--	94	H	--	BSW	9.2	7J	226	668	--	670	300	CP
225/45R17		--	94	H	XL	BSW	9.2	7 1/2J	225	634	--	670	340	CP
225/50R17		--	94	H	--	BSW	9.2	7J	233	658	--	670	300	CP
225/60R17		--	103	H	XL	BSW	8.6	6 1/2J	228	702	--	875	340	CP
225/65R17		--	102	S	--	BSW	9.2	6 1/2J	228	724	--	850	300	CP
235/45R17		--	94	H	--	BSW	9.2	8J	236	644	--	670	300	CP
245/45R17		--	99	V	XL	BSW	8.6	8J	243	652	--	775	340	CP
18	225/40R18	--	92	H	XL	BSW	9.2	8J	230	637	--	630	340	CP
	225/45R18	--	95	V	XL	BSW	8.6	7 1/2J	225	659	--	690	340	CP
	235/50R18	--	101	V	XL	BSW	8.6	7 1/2J	245	693	--	825	340	CP



# HW02



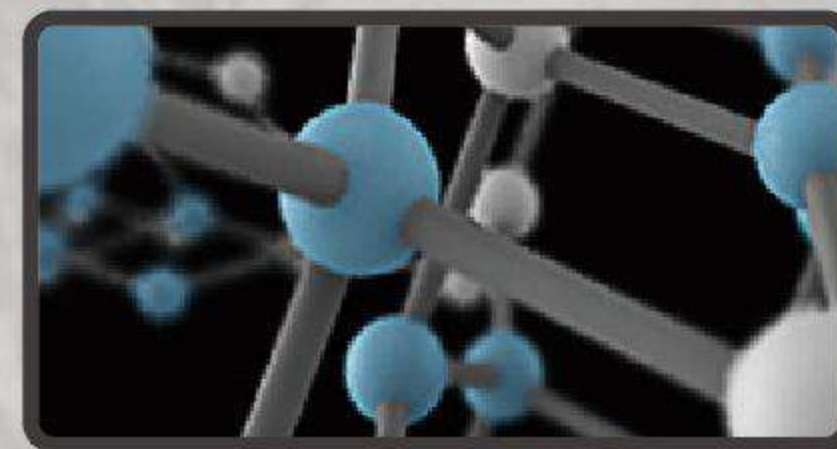
Specially developed HW02 employs a special pattern construction and tread compound to enhance driving safety and performance in extreme winter weather conditions.



## PATTERN DESIGN & FEATURES

### Product Design

### Product Performance



#### Winter Tread

The tread utilizes a winter specific compound that provides consistent performance for winter weather driving.



#### Ice Grip

The tread studs are designed in a pattern to provide better performance on ice and reduce tire vibration.



#### Winter Design

This directional pattern is equipped with dense sipes to deliver excellent performance in all winter conditions.



## SIZES



	SIZE	PR	LI	SR	XL OR NOT	SIDEWALL	T.D (mm)	STANDARD RIM	S.W (mm)	O.D	UTQG	MAX LOAD (kg)	PRESSURE (kpa)	PLANT
13	175/70R13	--	82	T	--	BSW	9.7	5.00B	177	576	--	475	300	CP
14	175/65R14	--	82	H	--	BSW	9.7	5J	177	584	--	475	300	CP
	175/70R14	--	88	T	XL	BSW	9.7	5J	177	602	--	560	340	CP
	185/65R14	--	86	T	--	BSW	9.7	5 1/2J	189	596	--	530	300	CP
	185/70R14	--	92	T	XL	BSW	9.7	5 1/2J	189	616	--	630	340	CP
15	185/65R15	--	88	T	--	BSW	9.7	5 1/2J	189	621	--	560	300	CP
	195/60R15	--	88	T	--	BSW	9.7	6J	201	615	--	560	300	CP
	195/65R15	--	91	T	--	BSW	9.7	6J	201	635	--	615	300	CP
	205/65R15	--	94	H	--	BSW	9.7	6J	209	647	--	670	300	CP
	205/70R15	--	96	T	--	BSW	9.7	6J	209	669	--	710	300	CP
16	205/55R16	--	91	H	--	BSW	9.7	6 1/2J	214	632	--	615	300	CP
	205/60R16	--	96	H	XL	BSW	9.7	6J	209	652	--	710	340	CP
	215/60R16	--	99	H	XL	BSW	9.7	6 1/2J	221	664	--	775	340	CP
	215/65R16	--	98	H	--	BSW	9.7	6 1/2J	221	686	--	750	300	CP
	215/70R16	--	100	S	--	BSW	9.7	6 1/2J	221	708	--	800	300	CP
17	215/50R17	--	91	T	--	BSW	9.7	7J	226	648	--	615	300	CP
	215/60R17	--	96	S	--	BSW	9.7	6 1/2J	221	690	--	710	300	CP
	225/65R17	--	102	S	--	BSW	9.7	6 1/2J	228	724	--	850	300	CP
	235/65R17	--	104	S	--	BSW	9.7	7J	240	738	--	900	300	CP
	265/65R17	--	112	S	--	BSW	9.7	8J	272	776	--	1120	300	CP

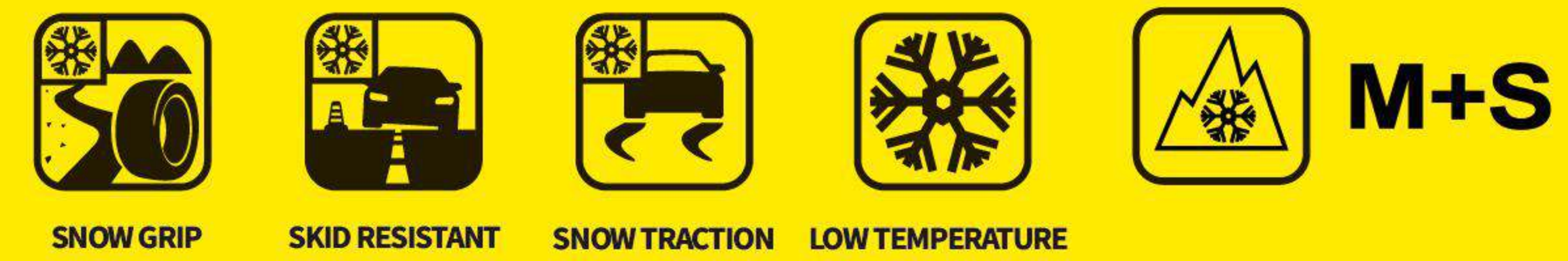




# HW03



All new cold, soft tread formula improve grip on ice and wet roads; optimized traction performance to achieve a safe driving experience.



## PATTERN DESIGN & FEATURES

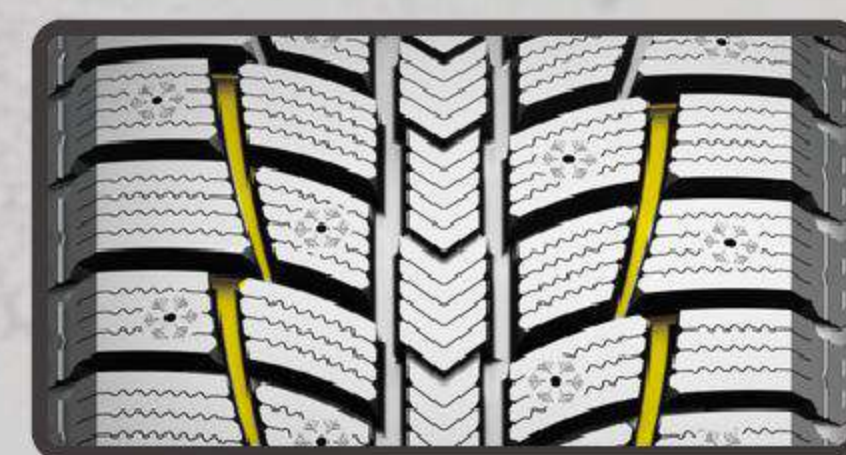
### Product Design

### Product Performance



#### Stud Arrangement

The 12 row stud arrangement increases grip distribution and traction to reduce skidding for an overall safer drive in winter weather conditions.



#### Winter Handling

The triangular serrated edges on the sides of the groove and large contact area effectively improve grip on ice and snow.



#### Tread Design

The unique sipe design offers excellent grip on ice while the tread compound maintains softness in extreme cold for greater driving capabilities on ice and snow.

## SIZES



	SIZE	PR	LI	SR	XL OR NOT	SIDEWALL	T.D (mm)	STANDARD RIM	S.W (mm)	O.D	UTQG	MAX LOAD (kg)	PRESSURE (kpa)	PLANT
15	175/65R15	--	84	T	--	BSW	10.0	5J	177	609	--	500	300	CP
	185/55R15	--	82	T	--	BSW	10.0	6J	194	585	--	475	300	CP
	185/60R15	--	84	T	--	BSW	10.0	5 1/2J	189	603	--	500	300	CP
	195/55R15	--	85	H	--	BSW	10.0	6J	201	595	--	515	300	CP
	215/70R15	--	98	T	--	BSW	6.5	6 1/2J	221	683	--	750	300	CP
16	205/65R16	--	95	T	--	BSW	6.0	6J	209	672	--	690	300	CP
	215/55R16	--	97	H	XL	BSW	7.0	7J	226	642	--	730	340	CP
	225/60R16	--	98	T	--	BSW	6.5	6 1/2J	228	676	--	750	300	CP
	225/65R16	--	100	T	--	BSW	6.5	6 1/2J	228	698	--	800	300	CP
	235/65R16	--	103	T	--	BSW	10.0	7J	240	712	--	875	300	CP
17	205/50R17	--	93	H	XL	BSW	10.0	6 1/2J	214	638	--	650	340	CP
	215/45R17	--	91	T	XL	BSW	10.0	7J	213	626	--	615	340	CP
	215/55R17	--	94	T	--	BSW	7.0	7J	226	668	--	670	300	CP
	215/65R17	--	99	T	--	BSW	10.0	6 1/2J	221	712	--	775	300	CP
	225/45R17	--	94	H	XL	BSW	7.5	7 1/2J	225	634	--	670	340	CP
	225/50R17	--	98	H	XL	BSW	7.0	7J	233	658	--	750	340	CP
	225/55R17	--	97	T	--	BSW	7.0	7J	233	680	--	730	300	CP
	225/60R17	--	99	T	--	BSW	6.5	6 1/2J	228	702	--	775	300	CP
	235/45R17	--	97	T	XL	BSW	10.0	8J	236	644	--	730	340	CP
	235/55R17	--	99	H	--	BSW	7.5	7 1/2J	245	690	--	775	300	CP
235/60R17	--	102	T	--	BSW	10.0	7J	240	714	--	850	300	CP	
18	215/45R18	--	93	H	XL	BSW	10.0	7J	213	651	--	650	340	CP
	215/55R18	--	95	T	--	BSW	10.0	7J	226	693	--	690	300	CP
	225/40R18	--	92	H	XL	BSW	10.0	8J	230	637	--	630	340	CP
	225/45R18	--	95	T	XL	BSW	10.0	7 1/2J	225	659	--	690	340	CP
	225/55R18	--	98	T	--	BSW	10.0	7J	233	705	--	750	300	CP
	225/60R18	--	100	T	--	BSW	10.0	6 1/2J	228	727	--	800	300	CP
	235/50R18	--	101	H	XL	BSW	10.0	7 1/2J	245	693	--	825	340	CP
	245/40R18	--	97	H	XL	BSW	10.0	8 1/2J	248	653	--	730	340	CP



# HW06

The z-shaped main groove and sipe pattern improve traction on ice and snow. The quantity and position of the studs strengthen tire grip for improved safety in winter.



## PATTERN DESIGN & FEATURES

### Product Design

### Product Performance



#### Winter Performance

The Z-shaped main grooves improve traction, prevent skidding, and reduce noise while driving on ice and snow.



#### Groove Design

Jagged groove edges bite into ice and snow for improved grip and traction performance.



#### Stud Arrangement

The number and locations of studs are designed to maximize tire grip and improve skid resistance.



#### Sipe Design

Interlocking sipes ensure driving safety by improving block rigidity and handling.



## SIZES

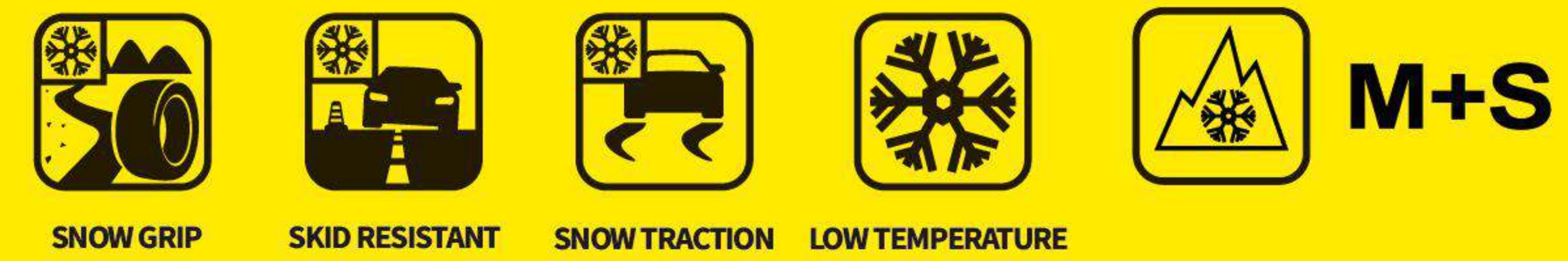


	SIZE	PR	LI	SR	XL OR NOT	SIDEWALL	T.D (mm)	STANDARD RIM	S.W (mm)	O.D	UTQG	MAX LOAD (kg)	PRESSURE (kpa)	PLANT
15	235/75R15	--	105	S	--	BSW	11.0	6 1/2J	235	733	--	925	300	CP
16	225/70R16	--	103	S	--	BSW	11.0	6 1/2J	228	722	--	875	300	CP
	235/70R16	--	106	S	--	BSW	11.0	7J	240	736	--	950	300	CP
	245/70R16	--	107	S	--	BSW	11.0	7J	248	750	--	975	300	CP
	245/75R16	--	111	S	--	BSW	11.0	7J	248	774	--	1090	300	CP
	LT225/75R16	10PR	115/112	Q	--	BSW	13.0	6J	223	744	--	1215/1120	550	CP
	LT245/75R16	10PR	120/116	Q	--	BSW	13.0	7J	248	774	--	1380/1260	550	CP
17	245/65R17	--	107	S	--	BSW	11.0	7J	248	750	--	975	300	CP
	245/70R17	--	110	S	--	BSW	11.0	7J	248	776	--	1060	300	CP
	265/70R17	--	115	S	--	BSW	11.0	8J	272	804	--	1215	300	CP
	LT245/70R17	10PR	119/116	Q	--	BSW	13.0	7J	248	776	--	1360/1250	550	CP
	LT245/75R17	10PR	121/118	R	--	BSW	13.0	7J	248	800	--	1450/1320	550	CP
	LT265/70R17	10PR	121/118	Q	--	BSW	13.0	8J	272	804	--	1450/1320	550	CP
18	235/55R18	--	100	T	--	BSW	11.0	7 1/2J	245	715	--	800	300	CP
	235/60R18	--	107	T	XL	BSW	11.0	7J	240	739	--	975	340	CP
	235/65R18	--	106	T	--	BSW	11.0	7J	240	763	--	950	300	CP
	245/60R18	--	105	T	--	BSW	11.0	7J	248	751	--	925	300	CP
	255/55R18	--	105	T	--	BSW	11.0	8J	265	737	--	925	300	CP
	255/70R18	--	113	S	--	BSW	11.0	7 1/2J	260	815	--	1150	300	CP
	265/60R18	--	110	T	--	BSW	11.0	8J	272	775	--	1060	300	CP
	275/65R18	--	116	S	--	BSW	11.0	8J	279	815	--	1250	300	CP
	LT275/65R18	10PR	123/120	R	--	BSW	13.0	8J	279	815	--	1550/1400	550	CP
	LT275/70R18	10PR	125/122	R	--	BSW	13.0	8J	279	843	--	1650/1500	550	CP
19	225/55R19	--	99	H	--	BSW	11.0	7J	233	731	--	775	300	CP
	235/45R19	--	95	H	--	BSW	11.0	8J	236	695	--	690	300	CP
	235/55R19	--	101	H	--	BSW	11.0	7 1/2J	245	741	--	825	300	CP
	245/55R19	--	103	T	--	BSW	11.0	7 1/2J	253	753	--	875	300	CP
20	245/50R20	--	102	H	--	BSW	11.0	7 1/2J	253	754	--	850	300	CP
	275/55R20	--	117	S	XL	BSW	11.0	8 1/2J	284	810	--	1285	340	CP
	275/60R20	--	119	S	XL	BSW	11.0	8J	279	838	--	1360	340	CP



# HW07

A winter tire specifically designed for commercial light trucks.



## PATTERN DESIGN & FEATURES

### Product Design

### Product Performance



#### Handling

The wide and jagged groove design efficiently drains snow and water out of the tire to improve handling in winter weather.



#### Tread Design

The intersecting blocks, grooves, and sipes allow for more effective braking on ice and snow.



#### Comfortable Drive

The tread width and block patterns ensure a secure contact with the road surface to improve driving comfort.



#### Grip

The precision cut sipes enhance grip on ice and snow to allow for a safer driving experience.

## SIZES



	SIZE	PR	LI	SR	XL OR NOT	SIDEWALL	T.D (mm)	STANDARD RIM	S.W (mm)	O.D	UTQG	MAX LOAD (kg)	PRESSURE (kpa)	PLANT
14	185R14C	8PR	102/100	R	--	BSW	9.6	5 1/2J	188	650	--	850/800	450	CP
	195R14C	8PR	106/104	R	--	BSW	10	5 1/2J	198	666	--	950/900	450	CP
15	195/70R15C	8PR	104/102	S	--	BSW	10	6J	201	655	--	900/850	450	CP
	195R15C	8PR	106/104	R	--	BSW	10	5 1/2J	198	690	--	950/900	450	CP
	205/70R15C	8PR	106/104	S	--	BSW	10	6J	209	669	--	950/900	450	CP
	215/70R15C	10PR	113/111	S	--	BSW	10	6 1/2J	221	683	--	1150/1090	525	CP
	225/70R15C	8PR	112/110	S	--	BSW	10	6 1/2J	228	697	--	1120/1060	450	CP
16	185/75R16C	8PR	104/102	R	--	BSW	9.6	5J	184	684	--	900/850	475	CP
	195/60R16C	6PR	99/97	T	--	BSW	10.2	6J	201	640	--	775/730	375	CP
	195/65R16C	8PR	104/102	T	--	BSW	10	6J	201	660	--	900/850	475	CP
	195/75R16C	8PR	107/105	R	--	BSW	10	5 1/2J	196	698	--	975/925	475	CP
	205/65R16C	8PR	107/105	T	--	BSW	10	6J	209	672	--	975/925	475	CP
	205/75R16C	10PR	113/111	R	--	BSW	10	5 1/2J	203	714	--	1150/1090	525	CP
	215/60R16C	8PR	108/106	T	--	BSW	10	6 1/2J	221	664	--	1000/950	475	CP
	215/65R16C	8PR	109/107	T	--	BSW	10	6 1/2J	221	686	--	1030/975	475	CP
	215/75R16C	10PR	116/114	R	--	BSW	10	6J	216	728	--	1250/1180	525	CP
	225/65R16C	8PR	112/110	T	--	BSW	10	6 1/2J	228	698	--	1120/1060	475	CP
	225/75R16C	10PR	118/116	R	--	BSW	10	6J	223	744	--	1320/1250	525	CP
	235/65R16C	8PR	115/113	R	--	BSW	10.2	7J	240	712	--	1215/1150	475	CP





**Important Tips for Optimal Tire Performance :**

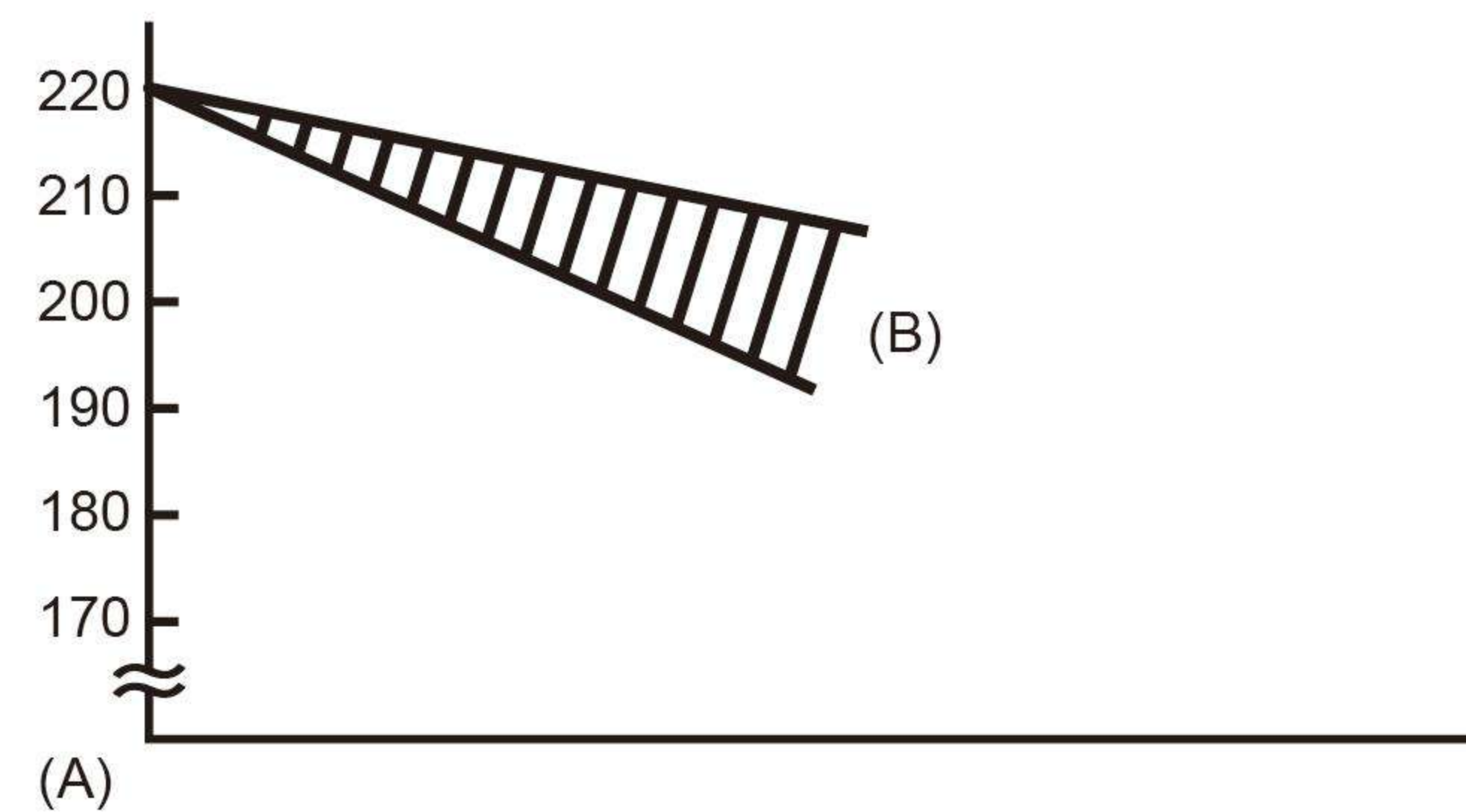
- 1 Maintain optimum air pressure
- 2 Inspect tread grooves to ensure tires are safe and legal
- 3 Visually check for tire damage

Ensure you check your tires once a month and before long trips to maintain performance and ensure safety.

**Why is it important I have the correct tire pressure?**

A tire at optimum air pressure should will ensure more safety, provide greater driving performance, improve tire life and reduce fuel consumption.

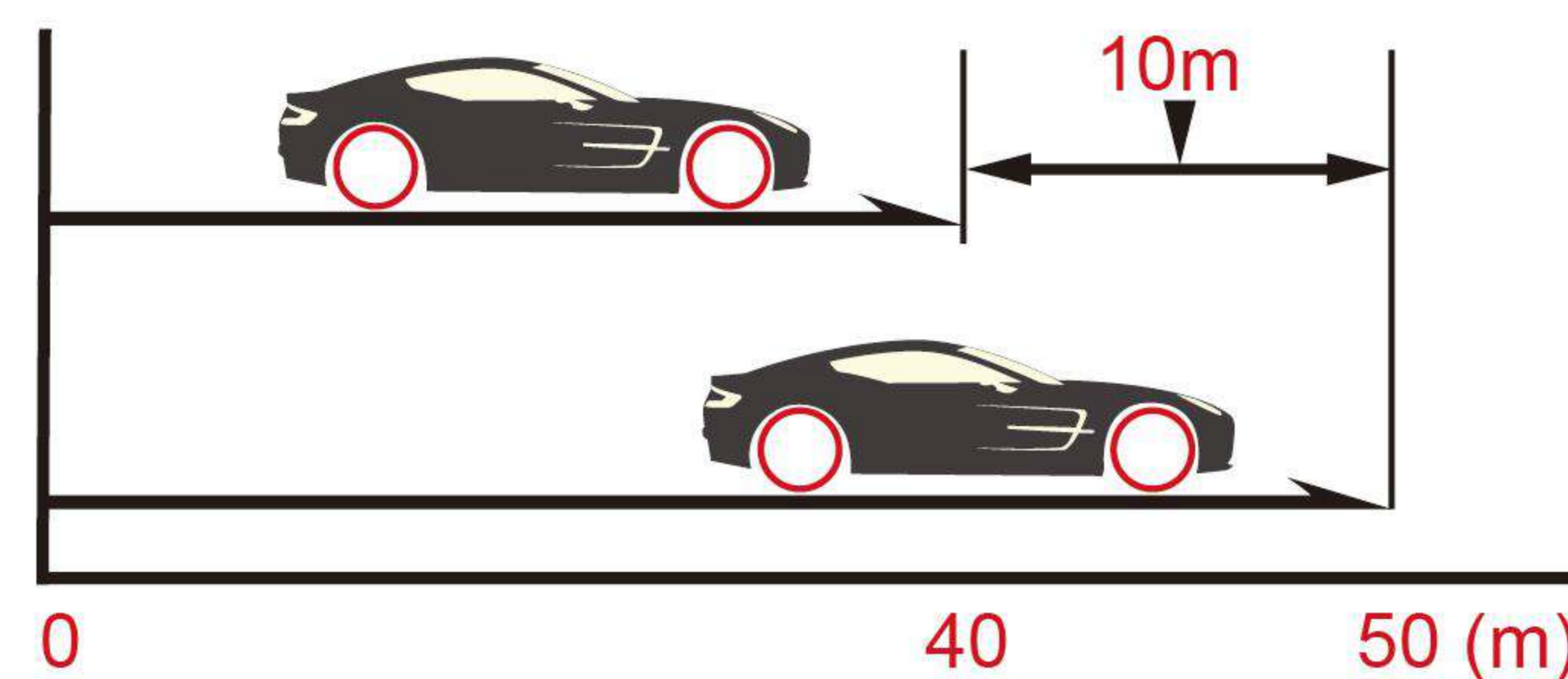
Tire air pressure decreases naturally (little by little). It is generally accepted that air pressure in tires on a passenger car decreases by 5–10% (10–20kPa) every month.



Tire size: 195/65R 15  
 Starting pressure: 220kPa (100kPa=1.0kgf/cm<sup>2</sup>)  
 (A) Air pressure (kPa)  
 (B) Decreases by 10-20kPa a month

**Dangers of Using Worn Tire**

Worn tires need a longer stopping distance on wet roads.



At the same speed (80km/h) and from the same braking point, there is a difference of 10 meters!  
 (A) New tire  
 (B) Worn tire (worn out to 1.6mm)

**Why is it Important I Check for Tire Wear?**

The deeper the groove, which is on the surface of the tire, the more grip a tire will have. As your tread pattern wears over time, the grip will begin to decrease. Never use a tire where even just one tread wear indicator is exposed.

TWI:Tread Wear Indicator(1.6mm)



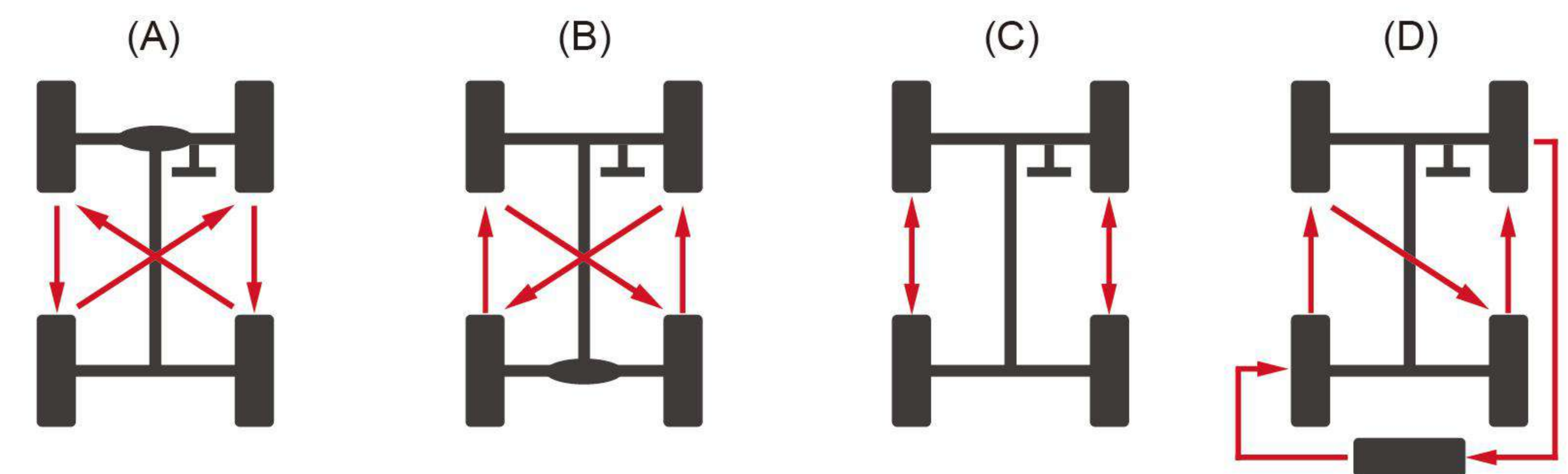
Indicator Mark:Triangle Symbol "▲"

<Tire Tread Wear Indicator >

**What are the advantages of tire rotation?**

- 1 Help Prevent Uneven Tread Wear
- 2 Extension of Tire Service Life (money in your wallet)
- 3 Averaging of Tire Fatigue

Note: The front-wheel tires of an FF vehicle wear two or three times faster than the rear-wheel tires because the front-wheel tires function for both driving and steering.



**Examples of Tire Rotation**

(A) FF Vehicle (B) FR Vehicle (C) Tires with Directional Patterns (D) Spare Tire Included